

Bite Back Magazine & Voice of the Voiceless presents:

200 farms. 60 days.

THE BLUEPRINT



Fur Farm Intelligence Project: The Full Report

THE LARGEST COLLECTION OF FUR INDUSTRY INTELLIGENCE TO DATE.

THE FUR FARM INTELLIGENCE PROJECT

200 farms. 60 days. The full report.

After months of research and footwork, the Fur Farm Intelligence Project releases the most comprehensive collection of fur farm addresses to date.

By Peter Young

In 1997, I left home with a list of fur farm addresses and drove across the country collecting notes on the U.S. fur industry. Those notes were confiscated by the FBI, I was sent to prison, and the notes were never made public.

In 2009, I organized a resurrection: a two-month road trip to every fur farm in the western U.S. The goal: compile the largest collection of raw fur industry data to date.

I drafted a budget. Bite Back magazine wrote a check. And the Fur Farm Intelligence Project came to life.

I recruited Daisy as a road trip partner. We spent two months scanning satellite images in fur farming regions. We cross-referenced every fur farm address collection. We assembled a binder of maps. We compiled lists of unverified addresses mined from media reports, fur industry literature, and the word-of-mouth stream. Then we left on the Fur Farm Intelligence Project (FFIP), a mission to document and verify 75% of the fur farms in the U.S.

Resurrection

My return trip would be absent the felonies, with an investigative scope never before attempted. Our goal was a complete blueprint of the fur industry. Every farm address, its operational status (open / closed), and every infrastructure target verified and mapped.

In the years since my first trip, the lynx pens of Fraser Fur Farm and sprawling prison of Short's Fur Farm festered in the darkest part of my psyche. And in those years, I plotted my return. A return to those Iowa dirt roads and Montana trails; a return to the farms. After staring thousands of animals in the eye only to walk away, I would return on their behalf.

This time, I would not be giving them freedom under darkness. And while anything less is to fail them, this investigation was no less crucial to winning their freedom.

Operation Bite Back Until Today: Fur Farm Data in the 2000s

The sum of the fur farm addresses we have today are found in two sources: The Final Nail #3 (2008), and TheFinalNail.com; both built from the original fur farm list, The Final Nail #1 (1996). Yet outside of A.L.F. raids, the "open" or "closed" status of each farm has never been verified. Central to our mission was this goal: providing the first operational-status update of known fur farms in 13 years.

Investigations into hard data on fur industry (as distinct from its treatment of animals) have taken many forms. The Coalition to Abolish Fur Farms released bulletins in the early-90's revealing for the first time addresses of fur farms and internal industry research documents. Rod Coronado infiltrated the Seattle Fur Exchange (now American Legend) in the early 1990s. An activist also infiltrated the International Mink Show in 1994, publishing an article on the information he gathered in the Militant Vegan #5. Illegal operations with data collection as their primary or secondary motive included Operation Bite Back (where addresses of fur farms were removed from labs), and the Hawkeye Mink Cooperative break-in (thousands of documents confiscated).

Mission Statement

The Fur Farm Intelligence Project will compile the largest collection of hard data on fur farms and fur industry infrastructure in 15 years. The Project is an endgame mission to map the entire grid of the industry, with a primary focus on names, addresses, and other actionable data.

The goals:

- 1) Verify the operational status of every known fur farm (open / closed)
- 2) Discover locations of unknown farms, research locations, and infrastructure sites.
- 3) Collect data at each location relevant to legal campaigns: including species seen, farm size, and more.
- 4) Publicly disclose all data in a single document.

The phases:

Phase One: A two-month road trip to visit, at minimum, 75% of the fur farms in the country.

Phase Two: Research and compilation of all known data on fur industry locations into one hard document, forming the largest body of raw, site-specific data to date.

Phase Three: Three: The public release of all compiled data in one document titled **The Blueprint**.



Coordinative Outreach and the Actionability of the Address

While past fur industry investigations focused on the treatment of animals, this one sought something else: names and addresses. Of all forms of animal rights outreach, the dissemination of “names and addresses” is at once among the most overlooked, and most potent. To understand the power of the name and address, one must accept a distinction between *actionable* info, and *unactionable*.

That which is actionable is information that serves as an immediate call to action. Unactionable data is informative, but offers no clear “next step”. A “Why Vegan” pamphlet is actionable: the reader can become vegan. Information becomes less useful the further it moves from being something that can be acted on in an immediate way. A philosophical tome on the socio-economic roots of animal exploitation may be informative, but brings with it no call for action. For outreach to be useful, it must *incite*.

An address gives injustice a fixed physical location, and confronts the reader with the obligation that comes with that knowledge. More than knowing of injustice, it is knowing *where*. The “next step” could be a protest or undercover investigation, but an address brings the burden of action.

The Parameters

Any breach of property lines to obtain info for a very public project would subject our team to possible criminal prosecution, and defy the instructions of the project’s financial backers. All information would be gathered from public space.

To confirm farms the hard way, we brought tools: Soundpro II unidirectional microphone (to pick up sounds of mink from a distance); military grade digital binoculars; old fur farm address lists; a list of new, unconfirmed addresses; digital camera; and video camera.

Scale-Based Strategy and Blueprints as Bullets

Above the equally horrific meat, dairy, and egg industries, intelligence gathering on the fur industry has a special significance. In 2009, the industry has shrunk to fewer than 350 supply-end sites. *Fewer than 350 physical locations form the sole architecture of the entire fur industry.* We have arrived at the stage the entire industry can be mapped into one concise blueprint. While a blueprint assists construction, it brings equal utility to deconstruction.

The Architecture of Avarice

The current farm and support structure of the U.S. fur industry (numbers approximate):

Processors / wholesalers / etc: numbers unknown.

Mink farms: 274

Feed suppliers: 12

Equipment suppliers (cages, etc): 10

Research farms: 5

Auction houses: 1

That is it. And the end of the industry does not require the erasure of every target, only their support structure. The further one moves upstream, the higher-impact the target. 274 farms are supported by only a very small and vulnerable support-base of research farms and feed suppliers.

A comprehensive industry map, with details of its supply and support structure, allowed an immeasurably greater ability to identify the weaknesses that would bring its collapse.

Were you, tonight, to pore over a list of thousands of chicken farms, chicken slaughterhouses, chicken feed producers, chicken research labs, and chicken distributors, it would be impossible to identify anything you could do that moment to remove a pillar from the industry and bring it measurably closer to collapse. In the fur industry, such pillars number in the low-dozens.

The fur industry is on the losing end of the scale / absorption quotient, whereby the effect of any one action is inversely proportional to an industry’s mass. In a large in-

dustry, no one target takes on major significance in the supply network – there is always another target that fulfills the same role, and quickly absorbs any business from a decommissioned building or bankrupt processor.

The fur industry is the opposite. Farms generally have only one choice for specialized feed. Industry research sites number at approximately five. Farms rely on breeding stock with genetic lines that are irreplaceable. From every angle, the industry is weak.

The fur industry is among the most vulnerable targets in our sights. We rented a car, and set out to create the roadmap to its collapse...

Read the full narrative of the two-month, 12-state Fur Farm Intelligence Project investigation in Bite Back magazine #15

BITE BACK



U.S. Fur Farm Numbers:

TRUTH VS. LIES

The following report was compiled by a national wildlife advocacy organization.

The USDA National Agricultural Statistics Service (NASS) collects data on the number of mink farms, the number of mink pelts produced broken down by color class, value of pelts, and the number of female mink bred, and the percentage of each fur color class the females were bred to produce. This information is compiled in an annual market report as are other agricultural commodities. The NASS does not collect data on farmed fox, lynx, or bobcat fur production.

According to the NASS, mink production reports are based on "a census of all known active producers." The list of "active producers" is compiled from "various sources" and the census is conducted via mail or telephone. In most cases NASS representatives do not actually visit the farms in the course of the census (pers. comm. Chris Hawthorn USDA 06/25/09). According to the 2008 census there were between 274 and 283 mink farms in the United States. However these numbers may not tell the whole story.

Most states where fur farms exist don't require farms to be licensed and state agriculture departments may not even be aware of the location, status, or existence of some farms. It is also possible that the NASS has knowledge of fur farms that the state agriculture or wildlife agencies are unaware of (pers. comm. Hawthorn).

Independent surveys (counting mink, fox, and lynx/bobcat farms) indicate there are significantly more fur farms in many states than are reported in the NASS. While the presence of fox and lynx/bobcat farms in alternative data explains some of the discrepancy, the alternative data also indicate a greater number of mink farms.

Some differences in numbers may be the result of how farms are counted. The NASS data do not distinguish between single location farms and farms with multiple locations; the data collected are entirely dependent upon how the producer collects data. So if a producer operates three farms but records the data collectively, the three farms are counted as one, but if the producer keeps separate records for each farm and reports each of them, the farms would be counted individually (pers. comm. Hawthorn).

Some variation in data may also be explained by lack of disclosure. The NASS records nine farms as being assigned to "other states" when in fact the information is not from farms in "other states" at all, but from states listed in the report that were

counted differently to "avoid disclosing individual operations."

Additional discrepancies can be found in the estimates of total number of mink pelts produced. The NASS reported that in 2007 a total of 2.83 million mink pelts were produced (USDA 2009). Data from the Fur Commission USA sourced from Oslo Fur Auctions estimate 3 million farmed mink pelts were produced that year (Fur Commission 2007). This amounts to hundreds of thousands of mink pelts possibly uncounted for by the USDA, further calling into question the accuracy of the USDA's annual mink report.

The NASS has also begun reducing the amount of data collected and published. The NASS used to note the total number of U.S. mink farms that also reported raising fox (although these data were never broken down by state or fur value). In 2006, 16 mink farms reported also raising fox (down from 19 in 2005). However, the 2007 NASS report contained a "special note" informing that "the number of mink farms also raising fox will no longer be published." Another "special note" included in the 2008 NASS report (released July 10, 2009) stated, "The number of operations by state will no longer be published on an annual basis. State level numbers will only be published in conjunction with the Census of Agriculture every five years. The number of operations at the U.S. level will continue to be published on an annual basis" (USDA 2009).

STATE	USDA DATA (mink only)	INDEPENDENT SURVEYS (includes mink, fox, lynx, bobcat)
Colorado	0	2
Idaho	24	25
Illinois	7	16
Indiana	0	9
Iowa	17	17
Massachusetts	0	1
Michigan	9	16
Minnesota	23	49
Missouri	0	9
Montana*	8	8
Nebraska	0	3
New Hampshire	0	1
New York	0	7
North Dakota	0	8
Ohio	9	10
Oregon	18	31
Pennsylvania	11	16
South Dakota	3	10
Utah**	65	90
Washington	9	20
Wisconsin	71	106
"Other States"	9	-
Total	283***	454

*** Total: The NASS reported 271 mink farms in the U.S. However, the state-by-state data provided in conjunction with information on pelts produced by color class inexplicably reflect a greater number of farms.

FEED SUPPLIERS

THE WEAK LINK

In a letter to the to the FDA from Dale Lawson of Northwest Farm Food, he states that without inexpensive and specialized feed ensuring top pelt quality, the U.S. fur industry would collapse.

"The additional costs associated with [FDA proposal leading to increase in feed costs] would, in my opinion, totally eliminate the mink industry in the United States."

A farmer speaking this candidly about the critical role of feed is not uncommon. I have viewed other industry literature laying bare this reality of fur farming in the U.S.: With other countries now able to produce fur more cheaply than the U.S., the only way U.S. farmers can compete and the only edge they have in the global market is superior pelt quality. And along with breeding stock, the most crucial factor in pelt quality is specialized feed. In Utah, when the Fur Breeder's Agricultural Co-op stopped delivering to their town, several farms were forced to close.

Feed cost is the largest cost incurred by fur farms, representing 50-60 percent of the total cost of producing a pelt.

With a mere dozen targets, there may be no weaker link in the fur industry.

The current breakdown of known U.S. feed suppliers:

Central Fur Food (WI)
Medford Fur Food (WI)
Wisco Feed (unconfirmed if this company still manufactures feed) (WI)
United Feeds (WI)
National Fur Foods (WI)
Northwest Farm Food-Burlington (WA)
Northwest Farm Food-Astoria (OR)
Fur Breeder's Agricultural Co-op: Logan (UT)
Fur Breeder's Agricultural Co-op: Sandy (UT)
Rancher's Choice (NE)
Hawkeye Mink Cooperative (IA)
Heger Company (MN)



DATA SOURCES

The vast majority of information being released in this document was gathered from binoculars, dirt roads and standing waist-deep in foliage during the 13,000 mile, two-month footwork phase of The Fur Farm Intelligence Project.

During the Project, internet research was de-emphasized for two reasons:

First: internet sources, being available to everyone effortlessly, were not in harmony with our mission to bring new, undiscovered data.

Second: most internet research is dependent on what they want you to see. Satellite images were invaluable to this project as a supplemental source for hard-copy data, but experience has shown that the best new data will not be found online.

All information contained in The Blueprint was obtained from the following sources:

On-site investigations

Over 200 farms - opened and closed - were visited during the two month road phase of the F.F.I.P.

Satellite images

Used primarily to verify the presence (or appearance) of animal sheds or pens at addresses obtained post-road phase.

Business entity records

Secretary of State's office records which give dues to a business's operational status were referenced.

Media reports

Old and recent media reports on the fur industry provided many addresses.

Business directories

Fur industry trade journals

and...

Just before going to print, we were provided with a box of documents from inside the fur industry. This paperwork was never intended for public circulation. These documents, ranging in date from 1998 to July, 2009 - were a wellspring of new addresses and other unpublished info. Among the documents were a fur farm mailing list, memos, business cards, and other paperwork providing leads on unknown farms.

Obtained at the final hour, this info was unable to be investigated during the road-phase, but all of it has been included here for the benefit of those wishing to do research locally (and make public their finds). Data from these documents have been marked as being sourced from "internal fur industry documents".

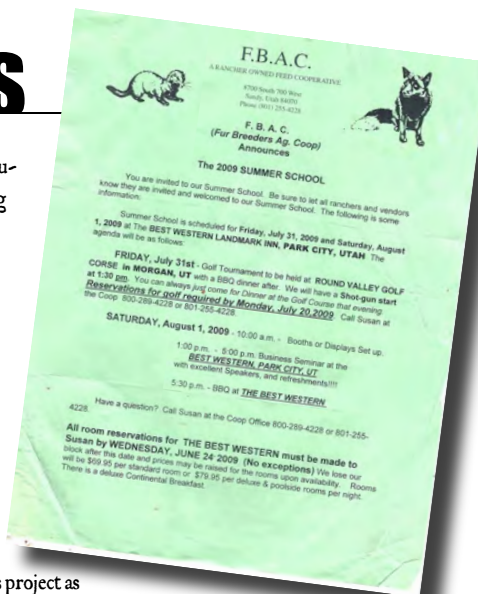
Completing the Blueprint

Towards a complete map of the fur industry, gaps remain in our movement's intelligence. The following are holes requiring investigation:

- *All farms in The Blueprint for which the status is listed "unconfirmed", "inconclusive" or "uninvestigated".
- *Every active farm not listed in The Blueprint, which await discovery.
- *The location of every farm in the "Closed Farm" database which was not found at its published address, yet may remain active at another, unknown address.
- *Full reports from the states not covered in the Fur Farm Intelligence Project: PA, IL, NY, IN, ND, SD, MO, OH, MD, MI, MN, & NC.

Fox, lynx, and bobcat farming are areas for which information is scarce. If you know of such a farm in your area, please make this information public, and submit to the email addresses below.

Please submit local reports, or any information regarding the above to:
nail@finalnail.com & info@voiceofthevoiceless.org.



Small Farm List

In the mid-90s, mink farms with 2 or 3,000 animals were not uncommon (fox farms generally imprison animals in the hundreds). In the last 10+ years, the consolidation in the fur industry is tremendous. Smaller farms have closed, and the large have gotten larger. During The Fur Farm Intelligence Project, we saw only a handful of farms that were likely to hold fewer than 5,000 mink. A list of the smallest mink farms found:

North 40 (Richmond, UT)
North Star Fur Farm (Ollie, IA)
Misty Moonlight Mink Ranch (Waverly, IA)
Seth Dawson (Morgan, UT)
J & G Mink Ranch (Highland, UT)
Ovard Mink Farm (Wanship, UT)
McMullin Fur Farm (South Jordan, UT)



Fur Industry Research

The industry's research apparatus is part of its central support structure.

In 2007, the Research Committee of the Fur Commission USA gave \$69,400 in funding for research projects to keep the industry afloat.

Most fur industry research targets have been raided, burned down, or otherwise sabotaged by the A.L.F. The raids have succeeded in disrupting research, saving animals, and confiscating data, but only one, Oregon State University, has been shut down.

The known remaining fur industry research sites:

Washington State University

The best information available on W.S.U. was submitted anonymously just before this article went to print (see sidebar under "Washington"). A raid by the A.L.F. in 1992 Destroyed Gorham's lifetime of research to benefit the fur industry, but did not put him out of business.

Gorham remains the second largest recipient of research grants from the Fur Commission USA, a strong indicator his research continues to be among the most significant.

Idaho State University

Dr. Jack Rose has been one of the two largest recipients of research grants from the Fur Commission USA "to support his studies on delayed implantation in mink". While it would seem unlikely research to benefit the fur farming industry would be done in an indoor laboratory setting, all attempts at finding an off-campus ag-research farm were unfruitful, and surveys of the outlying areas of campus failed to located mink sheds - if they exists. The fur industry deems Dr. Rose's research to be worthy of a significant percentage of its budget, and should be assumed to be a vital. Near the top of the "must locate" list.

Utah State University

Among the most feared threats to the fur industry is Aleutian Disease. It has wiped out numerous farms, pillaged entire regions of mink farming, and was said to have "ravaged" the Utah fur industry in the 90s. The cure and prevention of Aleutian disease is a prime focus of fur industry research.

When identifying a hub of Aleutian disease research, all arrows point to Utah State University.

Research labs and experimental farms report

"A vaccine is being developed against the disease by Utah State University that promises to eliminate these losses, which could save Utah mink producers \$2.4 million." (USDA, 2003)

Such a vaccine, if produced, would eliminate one of the largest threats the industry faces. In Utah, it has been called "the most serious livestock disease in the state". Aleutian Disease remains a threat: in 2009 several farms had to pelt out and start from scratch after Aleutian outbreaks.

As recently as 2004, Utah State University was confirmed to house 200 mink. In the rural areas surrounding Logan, UT are at least 11 satellite research facilities USU calls "agricultural experiment stations". In plain sight from major roads, numerous of species of animals - sheep, cows, turkeys, coyotes, and more - can be seen languishing in pens, the unwilling subjects of experiments to benefit the industries which, each year, claim their lives by the billions.

The small amount of information available on mink at U.S.U. specified the "North Logan Farms" research station houses this species. As of April 2009, the facility still had numerous animal pens and barns, nearly all of them empty. Additional research turned up an assessment by staff that "we (North Logan Farms) will be gone in the next few years". Small numbers of animals (sheep and cows) were reported, but the farm was said to be largely vacant.

However, there is no evidence this research has stopped. And for LeGrande Ellis, after 25+ years researching mink, an abrupt career change is unlikely.

Ellis's mink are out there. Responsibility now lies with all of us to find them.

National Fur Foods

By the time the address for the National Fur Foods Research Ranch was made public in 2008 it may have already moved, or closed altogether. In the 1990s this farm housed 4,000 mink, existing as the largest experimental mink farm in the country.

We drove north from Fon Du Lac to the disclosed location: "near intersection of Hwy 45 and Ripple Rd". Where the former research farm once stood near the western shore of

Lake Winnebago, we found a vacant lot.

The farm may have relocated, and its new location awaits discovery and disclosure. National Fur Foods is the single largest supplier of mink feed to farms in the country. Any research coming from National Fur Foods will be of premium benefit to an industry for which any small advancement is pivotal. If it continues to exist, it is imperative this research hub is located.

Michigan State University Fur Animal Research Station

On Jolly Road in Lansing, Michigan State University operates an experimental fur farm "where research on nutrition, physiology, toxicology and management of fur bearing animals is conducted." The latest information states, "The present Experimental Fur Farm can accommodate over 1,000 research animals". Former head researcher Richard Aulerich retired in 2002, but there is no evidence the farm has ceased operations.

Utah Fur Breeder's Cooperative

Behind the largest fur feed cooperative in the country sits an experimental farm. Partially visible from 700 West, these sheds are the site of feed research to benefit the Utah fur industry. The research portion of the farm is said to house 100 animals, which may be part of the larger Dixon Fur Farm (*Final Nail #3*), said to also sit on the FBAC property.

Head veterinarian Dr. Gary Durrant's research work with the FBAC is likely to have ended: Durrant was arrested in 2008 for sex crimes against underage boys.

More

Grants have also been given to various veterinarians and local fur farming organizations. In the past 4 years, the Research Committee of the Fur Commission USA has also given research grants to the following:

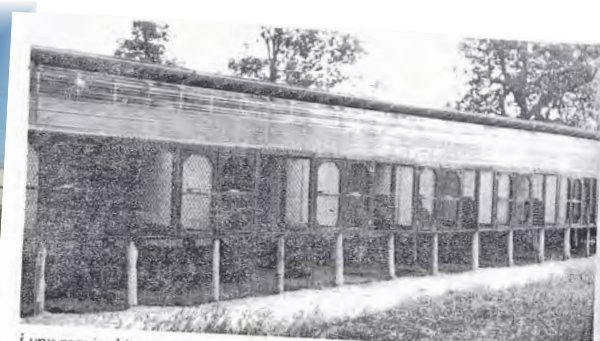
American Fur Merchants Association (New York, NY)

Olympic Fur Breeders (Granite Falls, WA)
Kettle Moraine Mink Breeders (Plymouth, WI)
Scintilla Development Company (Provides Aleutian Disease Virus testing for mink farmers) (Bath, PA)

Minnesota Fur Breeders (Detroit Lakes, MN)

Dr. John Easley (Plymouth, WI)

Dr. Hugh Haldebrandt, Medford Veterinary Clinic (Medford, WI)



Lynx require bigger, more expensive housing than mink and more food than either mink, fox or chinchilla.

Raising lynx poses several interesting challenges for the fur rancher. Unlike mink, which can be housed in very small cages, the lynx is a much larger and wilder animal, and as such, requires much more room. Lynx cages average three to four feet across and at least four to

including feline distemper and pan leukemia. Unlike the house cat, however, the lynx has no inbred resistance to these diseases.

As well, there is very little literature available to the fur rancher who wants to get started in lynx breeding. Unlike the fox, mink and

Evidence Threshold

To confirm a farm "open", the required evidence would be to either see, smell, or hear animals, or see evidence of their presence (such as waste accumulations).

To confirm closure, the burden of proof was much higher. Publicly announcing a farm "closed" would permanently erase a farm from the movement's radar, forever ensuring them against any activist efforts. Early on, we decided we were not comfortable with the burden of such ponderous responsibility: one mis-confirmed closure condemned to death every animal born on the farm until the end of its existence. In investigating farms from one side of the property line, evidence was often difficult to read and open to interpretation. Confirming 19 sheds empty said nothing conclusive about the 20th, and a visible row of gutted sheds did not preclude the possibility of many very full ones behind it. No matter how observant and thorough, there was always the potential of missed evidence that a farm was in fact open.

In consideration of the risks, definitive declarations will not be given. Instead, farms with no evidence of animals present will receive two notations:

- *A subjective opinion on the operational status of the farm.
- *An objective account of the evidence suggesting closure.

212 Farms Later...

It had been two months of 16-hour days, dirt roads, and the ever-present sight of imprisoned animals. After 12,000 miles and over 200 farms, we investigated the last Wisconsin address and made a slow return trip to Seattle.

Upon returning, we circulated a list of unverified farms and other locations. An attached letter asked anyone with information on these sites to submit it anonymously. Over the next month, we received several detailed reports on heavily veiled locations. These reports are contained throughout The Blueprint.

As word of the project spread, more information came in. The most salient being a box of internal fur industry documents specified only as being obtained "legally". The addresses, memos, invoices, and other documents provided many of the addresses that would be published in the final version of The Blueprint.

THE FUTURE OF THE FUR FARM INTELLIGENCE PROJECT.

The Fur Farm Intelligence Project is not complete until the industry is exhaustively mapped. This day is soon coming. The final phases will bring on-site visits to farms in Minnesota, Illinois, Indiana, Ohio, Massachusetts, Maryland, Pennsylvania, New York, Missouri, Michigan, South Dakota, and North Dakota.

THE BLUEPRINT

This document represents the culmination of the Fur Farm Intelligence Project. Every piece of data obtained during the two month, 12-state investigation has been released in a single document. Additional copies of The Blueprint can be downloaded at: www.voiceofthevoiceless.org

For Liberation,
Peter Young



THE FUR FARM LIST

What follows is the largest collection of fur farm (and fur industry infrastructure) addresses and intelligence to date.

All data compiled during the Fur Farm Intelligence Project - both in the road trip phase and the subsequent research phase - has been included in the list that follows.

States whose data has been made public by the USDA have been highlighted, and all known statistics included.

States where no on-site investigations were carried out have also been included, with info sourced from FinalNail.com and additional sources (see "Data Sources" sidebar).

New Farms: All new, previously unpublished addresses have been **bolded**, for review at a glance.

Fur Farm Address List



Farms. Feed Producers. Auction Houses. Research Facilities.

California

No known fur farms.

Los Angeles

Fur Information Council of America
8424-A Santa Monica Blvd., Suite 860
West Hollywood, CA 90069
Phone: (323) 782-1700 or (323) 848-7940
Fax: (323) 651-1417

Contact: Keith Kaplan, Executive Director;
Missy Smart, Chairman

Notes: "FICA provides background information and guidance on industry developments, researches markets trends and consumer habits, tracks and reports sales and price points, identifies issues of common concern, represents the fur industry in dealings with the press, the public sector and other industries, as well as state and federal governments. FICA monitors legislative initiatives and judicial actions that have direct impact on the fur industry."

American Scientific Laboratories
2520 San Fernando Rd
Los Angeles CA 90065

Status: Confirmed open, 2009.

Notes: Manufactures a mink distemper vaccine. Also a vendor at recent fur farmer's convention (2009).

Colorado

No known fur farms.

Programmed Release (PR) Pharmaceuticals (formerly Wildlife Pharmaceuticals)
1716 Heath Parkway
Fort Collins, Colorado 80524

Status: Unconfirmed.

Notes: Wildlife Pharmaceuticals merged with Programmed Release Pharmaceuticals in 1999. PR Pharmaceuticals filed for Chapter 11 bankruptcy in 2008. Acquired by SurModics in 2008. Current status of company is unknown. Wildlife Pharmaceuticals was at one time the only manufacturer of melatonin implants for fur bearing animals. The implants allowed farmers to pelt two months early, and cut feed costs by 18.8%. Owner Terry Cairns was also reported to be a fox farmer (1994). Unknown if this company still manufactures melatonin implants, or is still in business.

Spotlight: Fur Commission USA

Fur Commission USA

29 Port Royale Rd
Coronado CA 92118
(619) 575 0139
Teresa Platt
Phone: (619) 575-0139
Fax: (619) 575-5578

Notes: New, unpublished office address for the fur farming industry's largest trade and public relations organization. Teresa Platt, Executive Director; Simon Ward, Communications Director. "Fur Commission USA represents 420 mink-farming families on 330 farms in 28 states."

Board (as of June 2008):

Scott Harris, President
Paul Westwood, Vice President
Jim Wachter, Secretary
Robert Zimbal, Treasurer
Brad Wiebensohn, Board Member
Ryan Holt, Board Member
Ron Gengel, Board Member

Research Committee of Fur Commission USA

(formerly known as the Mink Farmers Research Foundation)

2007 Grants (most recent year from which information is available):

- \$7,500 grant to American Fur Merchants Association (New York, NY)
- \$9,000 grant to Fur Breeders Agricultural Coop (Sandy, UT)

- \$1,000 grant to Olympic Fur Breeders (Granite Falls, WA)
- \$20,000 grant to Dr. Steve Bursian, Michigan State University (East Lansing, MI)
- \$7,400 grant to Dr. Jack Rose, Idaho State University (Pocatello, ID)
- \$10,000 grant to Dr. Kirsti Rouvinin-Watt, Nova Scotia Agricultural College (Truro, NS)
- \$1,500 grant to Kettle Moraine Mink Breeders (Plymouth, WI)
- \$10,000 grant to Dr. John Gorham, Washington State University (Pullman, WA)
- \$3,000 grant to Scintilla Development Company (Bath, PA)

2006 Grants:

- \$10,000 grant to American Fur Merchants Association (New York, NY)
- \$9,000 grant to Fur Breeders Agricultural Coop (Sandy, UT)
- \$1,000 grant to Minnesota Fur Breeders (Detroit Lakes, MN)
- \$1,000 grant to Olympic Fur Breeders (Granite Falls, WA)
- \$20,000 grant to Michigan State University (East Lansing, MI)
- \$6,000 grant to Dr. Jack Rose, Idaho State University (Pocatello, ID)
- \$10,000 grant to Dr. Kirsti Rouvinin-Watt, Nova Scotia Agricultural College (Truro, NS)
- \$1,500 grant to Kettle Moraine Mink Breeders (Plymouth, WI)
- \$7,000 grant to Dr. John Easley (Plymouth, WI)
- \$7,000 grant to Dr. Hugh Haldebrandt, Medford Veterinary Clinic (Medford, WI)
- \$10,000 grant to Dr. John Gorham, Washington State University (Pullman, WA)

2005 Grants:

- \$20,000 grant to Dr. Steve Bursian, Michigan State University (East Lansing, MI)
- \$7,000 grant to Dr. Jack Rose, Idaho State University (Pocatello, ID)
- amount unknown, Dr. David J. Prieur, Washington State University (Pullman, WA)

INDIANA

Anderson

Adams Fox & Mink Ranch
2814 East 150 South
Anderson, IN 46017
Species: Fox.

Notes: Approximately foxes: silver, arctic, & blues. 150 to 200 outdoor pens, with 4 or 5 short sheds housing the silvers. Mink reportedly no longer held here. E 150 S is also known as 25th Street Road. Farm is located west of Markleville Road/S 300 East.

Middlebury

Hidden Meadow Fur Farm
59821 County Rd 33
Middlebury, IN 46540
(219) 820-5930
Rick & Renea Miller
Species: Fox.

Montpelier

Owl Creek Fox Farm

8343 S 1000 W

Montpelier, IN 47359

Contact: Verlis Slusher, Lois Slusher

Phone: (260) 375-3845

Species: Fox.

Notes: Four short sheds housing approximately 200 to 300 total foxes. Sheds are very close to the house. Located south of W 800 S, on east side of road. Farm may be closed (investigation needed).

Rochester

Flory Fur Farms

5440 State Road 110

Rochester, IN 46975

Contact: Doyle Flory

Species: Fox.

Notes: Farm may be closed (investigation needed).

IDAHO

Total mink imprisoned (kits + breeders):

279,900

Average farm size: 11,663

24 mink farms in 2007

Number confirmed, or appearing active: 15

Newly discovered farms confirmed or showing evidence of being open: 6

Newly discovered mink farms uninvestigated: 2

Farms found closed or not at their published address: 2

Farms yet to be discovered: 9+

Burley

Geary Fur Farm

425 West 400 South

Burley, ID 83318

Phone: (208) 678-3327

Jed & Treena Geary

Status: Confirmed open, 2009.

Species: Mink.

Notes: 22 sheds. House at a distance from the sheds.

Moyle Mink Ranch

571 E. Highway 81

Burley, ID 83318

Phone: (208) 654-2033

Don Moyle

Status: Confirmed open, 2009.

Notes: Located off Highway 81, south on S 600 E to end of road. Dirt service road runs along entire rear of property along river, off 550 E. Two farms on this stretch of Hwy 81.

Fur Farm

Intersection of 350 E & Hwy 81

Burley, ID

Status: Inconclusive.

Species: Mink.

Notes: On E side of 350 E / S side of Hwy 81. Along the same river as Moyle Mink Ranch. Survey of approximately 50% of the property showed nesting boxes removed and cages empty. However there was much evidence indicating this was a functioning farm: equipment in sheds, functioning water system, and intact sheds and cages. Many farms in Idaho found to be at only 50% capacity. Possible this is an active farm. Two farms on this stretch of Hwy 81.

Caldwell

Harris Mink Farms

15258 Green Road

Caldwell, ID 83607

Phone: (208) 459-6015 or (208) 459-9359

brenthmf@cs.com

Donald B. Harris, Scott Harris (President, Fur Commission USA; as of 2006)

Status: Confirmed open, 2009.

Species: Mink.

Notes: Large farm. Sheds at a distance from the house. Photoelectric sensors positioned in corners of the farm. Numerous empty sheds. On busy road. Email address previously unpublished.

Eagle

Riverside Mink Ranch

4015 Old Valley Road

Eagle, ID 83616

Status: Inconclusive.

Species: Mink.

Notes: On-site investigation found address to be a nursery. Later review of satellite images show three sheds at end of Frost Lane, south side of road, near nursery.

Filer

Moyle & Sons Fur Farm

(Rock Creek Canyon Ranch)

4052 North 2600 East

Filer, ID 83328

Phone: (208) 733-4440

Jay & Barbara Moyle

Dean Moyle: Vice President

Status: Confirmed open, 2009.

Species: Mink.

Notes: Set back from road at end of driveway. On a river. Furthest sheds are at a distance from the house. Two houses on the property.



HARRIS MINK FARM
CALDWELL, ID



MOYLE MINK FARM
FILER, ID



GEARY FUR FARM
BURLEY, ID

Franklin

Note: Six clusters of sheds or single mink sheds are dispersed around a six block residential area in downtown Franklin. All appeared to be sheds. Police attention prevented confirmation of addresses and status of each. The list of the micro-mink farms found is as follows:

Hobbs Furs
24 North 1st East
Franklin, ID 83237
Jeffrey T. Hobbs
Phone: (208) 646-2401

Kingsford & Son
250 South 1st East
Franklin, ID 83237
Larry D. Kingsford

One shed west of street, Two sheds east of street.

N 1st St E and E 1st St N
Very small shed on side of house. Half
size. Cages inside visible from road.
New, unpublished info.

E end of E 200 S
Sheds on N & S side of road.
New, unpublished info.

Approx. 250 S 200 E
W side of road.
New, unpublished info.

E end of E 100 N / Intersection of Spring
Creek Rd / Lowe Lane
Cluster of sheds N side of E 100 N / S
side of Lowe Lane
New, unpublished info.

Kevin Hobbs Fur Farm
4175 S. Parkinson Road
Franklin, ID 83237
Kevin Hobbs
Status: Confirmed open, 2009.
Species: Mink & fox.
Notes: Across the street from Hobbs Fur Farm

Hobbs Fur Farm
331 Parkinson Road
Franklin, ID 83237
Phone: (208) 646-2418
Contact: Boyd T. Hobbs
Status: Confirmed open, 2009.
Species: Mink & fox.
Notes: Across the street from Kevin Hobbs Fur
Farm.

Brets Mink Ranch
2904 South 2800 East
Franklin, ID 83237
Phone: (208) 646-2513
Bret D. & Annette Hansen
Status: Uninvestigated.
Species: Mink.

Grace

Fur Farm
On Mingo Rd / Cattle Trail Rd btwn
Bench View & Niter Bench.
Grace, ID
Status: Uninvestigated.
Notes: Media reports the Logan plant of

the Fur Breeder's Agricultural Co-op "de-
livers as far north as Grace, ID". Possible
farm at the above location.

Heyburn

Moyle Mink Farm
390 South 600 West
Heyburn, ID 83336
Phone: (208) 678-8481
Lee & Martha Moyle
Status: Confirmed open, 2009
Species: Mink.
Notes: Large farm. Associated with Moyle Mink
and Tannery. East side of road. 50 sheds. Visible
from I-84. In very commercial area.

Malad

Ball Brothers Fur Farm / B&D Fur Farm
2726 N 5600 W
Malad City, ID 83252
William "Bill" Ball Jr.
Status: Confirmed open, 2009.
Species: Mink.
Notes: Large farm with 20,000 mink. Updated
address & farm name. Very remote location. Ap-
proximately 24 sheds. No house on site.

Malta

Smith Mink Farm
155 2nd Street West
Malta, ID 83342
Phone: (208) 645-2316
Cregg Smith
Status: Confirmed open, 2009.
Species: Mink.
Notes: Located at end of service road running
W off of 2nd St, after bend. 11 sheds. Most sheds
found empty. This farm is very isolated and set
back from any traveled road. No house on site.

Fur Farm
1175 South Highway 81
Malta, ID
Status: Likely to be a newly constructed
farm.
Species: Empty mink cages found.
Notes: New, unlisted farm on W side of
Highway 81. Buildings appeared to be
newly constructed. Approximately 50% of
the farm surveyed. All cages found empty.
Likely to open in the near future. No
house on site.



NEWLY-BUILT MINK FARM
MALTA, ID



SMITH MINK FARM
MALTA, ID



MOYLE MINK FARM
HEYBURN, ID



B&D FUR FARM
MALAD, ID

Pocatello

Jack Rose
Idaho State University
Gale Life Sciences Bldg., Room 306/307
921 South 8th Avenue
Pocatello, ID 83209
Phone: (208) 282-3765
Fax: (208) 282-4570
Notes: Received \$7,400 grant from Fur Commission USA in 2007, \$6,000 grant in 2006 and \$7,000 grant in 2005, "to support his studies on delayed implantation in mink." Address is for Rose's office. Location of mink unknown. Unknown of Rose performs research on an experimental fur farm or in a laboratory setting. Investigation needed.

Preston

Palmer Mink Ranch
1988 South 600 West
Preston, ID 83263
James R. & Linda Palmer
Status: Confirmed open, 2009.
Species: Mink & fox.
Notes: Sheds close to road. Located across the street from Lew Palmer Mink Farm.

Lew Palmer Mink Ranch
1768 South 600 West
Preston, ID 83263
Lewis J. & Staci Palmer
Status: Confirmed open, 2009.
Species: Mink.
Notes: Located across the street from Palmer Mink Farm.

Griffin Fur Farm
440 W 800 S
Preston, ID 83263
Kelly K. Griffin
Status: Uninvestigated.
Source: Business records.
Notes: New, unpublished info.

Wendel

A-K Moyle Ranch
3539 South 1500 East
Wendell, ID 83355
Allen & Karla Moyle
Status: Confirmed open, 2009.
Species: Mink.
Notes: Trail to the north of the sheds, along fence.

Weston

Sandy Hill Mink Ranch
2951 West Hwy. 36
Weston, ID 83286
Dwain L. & Sandra Weeks
Status: Unconfirmed. Evidence points to active, 2009.
Species: Mink.
Notes: No farm found at this address. Possible alternate location: North of Dayton on Hwy 36 / N Westside Hwy, just south of 2400 N, east side of road.

ILLINOIS

No fur farms in IL were investigated during the Fur Farm Intelligence Project. Data is from Final Nail.com, with updates made to several entries based on the latest info.

2007 USDA mink farm statistics: 7 farms
Total number of animals: 82,700
Average farm size: 11,814

Bluffs

Littig Fox Ranch
1774 Eagle Run Road
Bluffs, IL 62621
Contact: Terry Littig, Kerry Littig
Species: Fox.

Crystal Lake

Frye's Fur Farm
2224 Behan Road
Crystal Lake, IL 60014
Phone: (815) 455-4862 or (815) 459-0823
Contact: Larry Frye, Steve Frye, Robert J. Frye
Species: Mink.

Dieterich

David Draves Fur & Archery
5758 N. 2200th Street
Dieterich, IL 62424
Contact: David W. Draves, Jessy Draves, Victoria Draves
Species: Fox.
Notes: Farm may be closed (investigation needed).

Downer's Grove

Charles Ide Jr.
8250 Edgewood Drive (off of 83rd Street)
Downers Grove, IL 60516
Contact: Charles C. Ide, Janet Ide & Harold Melkus
Species: Mink.
Notes: Farm reported closed (investigation needed). One of the oldest farms in the country, founded in 1932.

Dundee

MSC (formerly Milk Specialties Company)
260 S. Washington Street
Dundee, IL 60118
Phone: (800) 323-4274 or (847) 426-3411
Fax: (847) 426-4121
Contact: Trevor Tomkins, CEO
Notes: Owns National Fur Food (largest fur farm feed supplier); see National Pet Products (New Holstein, WI). Located at corner of Illinois & Water Streets. Reported that no feed is produced at this location.

Elgin

Montelone Mink Ranch
891 Plato Road
Elgin, IL 60123
Phone: (847) 464-5118
Contact: Frank & Bernice Montelone
Species: Mink.
Notes: Large farm. Plato Road in Elgin is also known as County Road 32.

Hampshire

William Dumoulin
16N393 Walker Rd
Hampshire, IL 60140
(847) 683-3886
Species: Mink.
Notes: Listed as "pig, mink farm". Satellite images show one long shed in back, resembling a mink shed. Located on Walker Road between Allen Road and Highway 72.

Lake Villa

Gengel Mink Farm
38614 N. Fairfield Road
Lake Villa, IL 60046
Phone: (847) 356-5661
Fax: (847) 356-1617
Contact: Ronald & Joanne Gengel
Species: Mink.

Notes: Ron Gengel is a Board Member, Fur Commission USA (as of 2006). The Gengel family also operates a Christmas tree farm (Gengel Tree Farm, in Lake Villa).

Illinois Mink Wire Company
38614 N. Fairfield Road
Lake Villa, IL 60046
Phone: (800) 408-5661 or (847) 356-5661
Fax: (847) 356-1617
Contact: Ron Gengel, Gerry Gengel
Notes: Sells Minkomatic feeders, fleshing/skinning machines and wire for cages. Illinois Mink Wire Co. is the U.S. representative for foreign fur farm suppliers, such as Dansk Mink Papir, Hedensted Gruppen, and Morsø Mink.

Marengo

Hidden Farms
23707 Grange Road
Marengo, IL 60152
Contact: Roger Groenland
Species: Mink.
Notes: Farm may be dosed (investigation needed).

Sorensen Mink Farm
19014 Kishwaukee Valley Road
Marengo, IL 60152
Species: Mink.
Contact: Hans Sorensen

Polo

Michael S. Singley Foxes
2792 S. Lincoln Avenue
Polo, IL 61064
Phone: (815) 946-3439
Species: Fox.
Notes: Farm may be dosed (investigation needed).

Roanoke

Aeschleman Fur Company
1574 County Road 1600 East
Roanoke, IL 61561
Phone: (309) 923-7656
Contact: Daniel K. Aeschleman, Soni G. Aeschleman
Species: Fox, deer, & raccoon.
Notes: Also sells fox, deer and raccoon urine.

Union

The Mink Barn
4609 Franklinville Road
Union, IL 60180
Contact: Vanessa Christensen
Species: Mink.
Notes: Farm reported closed in 2000 (investigation needed).

Volo

Daniel Frey
26421 W. Molitor Road (at N. Fish Lake Road)
Ingleside (Volo), IL 60041
Species: Mink.
Notes: Farm reported closed (investigation needed).

Wadsworth

Imperial Mink Ranch
39495 N. Mill Creek Road
Wadsworth, IL 60083
Phone: (847) 336-6760
Contact: Jeff Serdar
Species: Mink.
Notes: Farm may be closed (investigation needed).

IOWA

Total number of mink imprisoned (breeders + kits): 193,000
Average farm size: 11,353

17 mink farms in 2007
Number confirmed as open, or appearing active: 14
Newly discovered mink farms confirmed, or showing evidence of being open: 0
Newly discovered mink farms uninvestigated: 2
Mink farms found closed or not at their published address: 12
Farms yet to be discovered: 1+

Number of fox farms: Unknown
Number confirmed as open, or appearing active: 8 (Three mink farms also found to house fox).
Newly discovered fox farms confirmed or showing evidence of being open: 1
Newly discovered fox farms uninvestigated: 0
Fox farms found closed or not at their published address: 3

Anamosa

Robert Roman
23778 Fairview Road
Anamosa, IA 52205
Phone: (319) 462-4107
Status: Inconclusive.
Species: Fox.
Notes: Small backyard. If farm exists, it is very small.

Belle Plaine

Schmuecker Fox Farm
1545 79th Street Trail
Belle Plaine, IA 52208
Phone: (319) 444-2219
Danny & Nancy Schmuecker
Status: Inconclusive.
Species: Fox.
Notes: No sheds or pens seen from road. Closer inspection was not made.

Cedar Rapids

Diamond V Mills
838 1st Street NW
Cedar Rapids, IA 52407
Phone: (800) 373-7234 or (319) 366-0745
Fax: (319) 366-6333
Contact: John C. Bloomhall, President & CEO
Status: Uninvestigated.
Notes: Fur feed ingredient supplier

Cherokee

Perrin & Sons Fur Farm
1637 600th Street
Cherokee, IA 51012
Phone: (712) 225-5348
C E Perrin
Status: Confirmed open, 2009.
Species: Mink & fox.
Notes: Large fur farm. Located west of Highway 59. N side of the road. Sheds directly on the road. Sheds & fox pens are at a great distance from the house. Dirt road. "Perrin Farm" sign posted.

Fredericksburg

Woodring Fur Farm
3020 250th Street
Fredericksburg, IA 50630
Status: Confirmed open, 2009.
Species: Mink.
Notes: Large fur farm. Located just west of Union Avenue/County Road V56. Sheds very close to the road. Dirt road.

Underwood Farm
2260 Quinlan Avenue
Fredericksburg, IA 50630
Justin Underwood, Mary J. Underwood
Status: Inconclusive.
Species: Mink.

Notes: Located south of 220th Street, west of Roanoke Avenue. Undergoing major construction / deconstruction, 2009. Many sheds visible on satellite images have been dismantled. No animals smelled or seen. Farm is either being heavily renovated, or dismantled.

Jewell

Palmer Erickson
3374 Saratoga Avenue
Jewell, IA 50130
Marilyn Erickson
Status: Confirmed open, 2009.
Species: Mink & fox.

Notes: Located south of 330th Street/Highway 175. West side of road. Approximately 100 fox pens at rear / west end of property. Numerous mink pens with black & white mink. Train tracks run along W side. Jewell lagoon sits directly west of farm.

Hawkeye Mink Cooperative
1324 Main St
Jewell, IA
(515) 827-5458
Status: Evidence points to active, 2009.
Notes: Fur farm feed supplier & pelt processor.

Isebrands Fur Farm
3221 Queens Avenue
Jewell, IA 50130
Phone: (515) 827-5562
Mark Isebrands, Floyd L. & Shirley Isebrands
Status: Confirmed open, 2009.
Species: Mink.
Notes: Located between 320th and 330th Streets. Open. Dirt road. Many sheds directly on the road. House at a significant distance from many of the sheds.

Steve Hassebrock
2931 280TH ST
Jewell, IA 50075
(515) 827-6198
Status: Uninvestigated.
Source: Final Nail #3, residence directory.
Notes: Newly discovered farm. Address previously unpublished. Name published in Final Nail #3. Satellite images show what appear to be mink sheds.

Lawton

Gilbert C. Holmes
7510 Correctionville Rd.
Lawton, IA 51030
(712) 274-1285
Status: Uninvestigated.
Source: Final Nail #3, residence directory.
Notes: Address previously unpublished. Name published in Final Nail #3. Satellite images show what may be mink sheds at this location.

Mystic

Mark McGrann
19093 / 19075 Highway T14
Mystic, IA 52574
Phone: (641) 437-4028
Status: Inconclusive. Presence of a single wide shed confirmed.
Notes: Wide shed (4+ rows) behind house. Address previously published as 19013 Highway T14. Mailboxes at end of driveway read "19093" & "19075" (two houses on driveway).

New Hampton

Earl Drewelow & Sons
2477 239th Street
New Hampton, IA 50659
Status: Inconclusive.
Species: Mink.
Notes: 239th St. is off Odessa Avenue, north of 240th Street/County Road B54. Earl Drewelow died February 2007; survived by his son Harvey. Best viewed from 240th St.
Numerous small sheds and one large mink barn. Sheds at a great distance from the house.

New Sharon

Ruby Fur Farm
2564 200th Street
New Sharon, IA 50207
Phone: (641) 672-2067
Fax: (641) 672-0262
Mae Ruby
Status: Confirmed open, 2009.
Species: Skunk, ferrets, raccoons, skunks. Possibly other species.
Notes: "We specialize in breeding and raising ferrets, raccoons, and skunks and we offer them wholesale to pet stores." Dirt road. Two houses on property. Corn fields on all sides of sheds. Numerous species audible from inside farm.

Palmer Erickson fur farm Jewell, IA

Received anonymously.

"After receiving a request for more information on the Palmer Erickson fur farm, we entered the property in the middle of the day and compiled this brief report. Enclosed, please find photos of the animals and layout of the farm. This is the last fur industry target in Jewell untouched by the A.L.F. Inside the Erickson farm, which is not visible from Saratoga Ave, we found the following: many thousands of both black and white mink, and approximately 100 foxes held in pens at the rear of the property. We would like to point out Erickson's house is located quite a distance from the mink and fox pens. We were able to freely move about this farm during the day, an effort that would be made even easier under darkness. While we failed in our duty to save these animals, we hope these photos inspire others to act with their hearts and bring this sick enterprise to an end."

PALMER ERICKSON MINK & FOX FARM JEWELL, IA



Ollie

North Star Fur Farm

26614 280th Street

Ollie, IA 52576

Status: Confirmed open, 2009.

Species: Mink.

Notes: Small farm. S side of road. House in close proximity to sheds.

Osage

Silver Fox Farms

2596 370th Street

Osage, IA 50461

Contact: Brian Huffman

Status: Confirmed open, 2009.

Species: Fox.

Notes: Small fox farm. Dirt road. Farm is further east than the previously published location placing it at the corner of Primrose Ln. Outdoor fox pens directly behind house.

Fox Farm

2605 Hwy 9

Osage, IA

Status: Confirmed open, 2009.

Species: Fox.

Notes: Newly discovered fox farm. North side of road. Several sheds of various shapes visible from Highway 9, just east of downtown Osage.

Remsen

Klingbeil Mink Farm

22487 or 22485 Tamarack Ave

Remsen, IA 51050

Phone: (712) 786-3361

Donald Klingbeil

Notes: Confirmed open, 2009.

Species: Mink.

Notes: Large fur farm. Located between 220th and 230th Streets. West side of road.

Runnells

Morgan Valley Fox Farm

12420 S. 128th Avenue W.

Runnells, IA 50237

Phone: (515) 966-2028

Frank E. & Judy P. Rains

Status: Inconclusive.

Species: Fox.

Notes: Fox farm. If sheds / pens exist, they are very well-hidden at far rear of the property. Located north side of road, just east of W. 125th Street S. Dirt road. If farm exists, it is very small.

Sioux City

Circle K Fur Farm

3701 Memorial Drive

Sioux City, IA 51104

Phone: (712) 252-2202

Steven Krage

Status: Confirmed open, 2009.

Species: Mink & fox.

Notes: Approximately 5,000 mink & 100 fox.

Located north side of road. Sheds at a great distance from the house. Gate to rear of farm on Talbot, along farm's W side.

Swisher

Marak Fur Farm

1297 Marak Road NW

Swisher, IA 52338

Phone: (319) 857-4331

Darrel L. & Carolyn Marak

Status: Inconclusive.

Species: Fox.

Notes: Darrel Marak also sells animal urine. Farm on E side of road, house & address on W side. At least one shed visible from the road.

Toddville

James M. Roberston

3794 Toddville Road

Toddville, IA 52341

Phone: (319) 393-4454

James M. & Florence Roberston

Status: Inconclusive.

Species: Fox.

Notes: Heavily wooded property. S side of road, up long driveway. No sheds or pens visible.

Union

Andrews & Sons Fur Farm

32786 Highway D67

Union, IA 50258

Curt Andrews

Status: Inconclusive.

Species: Fox.

Notes: Single, very small animal shed with cages seen in fenced-off yard beside house. Contents undetermined / not visible.



DREWELOW & SONS
NEW HAMPTON, IA



UNDERWOOD FARM
FREDERICKSBURG, IA



WOODRING FUR FARM
FREDERICKSBURG, IA



ANDREW & SONS FUR FARM
UNION, IA



PERRIN & SONS FUR FARM
CHEROKEE, IA



FOX PENS @ PERRIN & SONS FUR FARM
CHEROKEE, IA



PALMER ERICKSON'S MINK & FOX FARM
JEWELL, IA



PALMER ERICKSON'S MINK & FOX FARM
JEWELL, IA



ISEBRANDS FUR FARM
JEWELL, IA



HAWKEYE MINK COOPERATIVE
JEWELL, IA

Waverly

Misty Moonlight Mink Ranch
1842 140th Street
Waverly, IA 50677
Contact: Nick Demuth
Phone: (319) 276-3350
Status: Confirmed open, 2009.
Species: Mink.

Notes: Small farm. Farm formerly reported as closed. Sheds close to road, on S side. House at a distance from sheds.

Webster City

Fassett Fur Farm
939 N. White Fox Road
Webster City, IA 50595
Phone: (515) 832-2094
515-832-5058
Jim F. Fassett
Status: Confirmed open, 2009.
Species: Mink.
Notes: White Fox Road is also known as R33. W side of Road. Sheds very close to house. Second phone number previously unpublished.

West Point

Merschman Fur & Wool
2240 Saint Paul Road
West Point, IA 52656
Mark Merschman
Status: No farm found at this address.
Source: On-site investigation.
Notes: No animals on site. Appears to be pelt processor / wholesaler only. Approx. 5 corrugated metal structures on site. Ambiguous sign on door reads "Closed. We are not buying fur".

Woodbine

David Tremel
2017 Troy Trail
Woodbine, IA 51579
Phone: (712) 647-2191
Status: Confirmed open, 2009.
Species: Mink.
Notes: Located west side of road, approx. 1/2 mile south of 194th Street. Service road cuts through field to the north running directly behind farm, parallel to 210th St.

MARYLAND

Parsons Mink Ranch
7765 Jersey Road
Salisbury, MD 21801
Contact: Frank Parsons
Species: Mink.
Notes: Farm may be closed (confirmation needed).

MASSACHUSETTES

Hinsdale

Berkshire Furs
172 Peru Road / County Road 143
Hinsdale, MA 01235
Phone: (413) 655-2653
Contact: Earl & Jeanne Carmel
Species: Mink.
Notes: Located east of the city center. The Carmel family also operates a retail store, Beck Furs, in Albany, NY. Jeanne Carmel is President of the American Mink Council (as of May 2007).

Northbridge

Riverdale Mills Corporation
130 Riverdale Street
Northbridge, MA 01534
Phone: (800) 762-6374 or (508) 234-8400
Fax: (508) 234-9593
Notes: Manufacturer of cages for mink farms.



DAVID TREMEL'S MINK FARM
WOODBINE, IA



CIRCLE K FUR FARM
SIOUX CITY, IA



FASSETT FUR FARM
WEBSTER CITY, IA



MISTY MOONLIGHT MINK RANCH
WAVERLY, IA

MICHIGAN

No fur farms in MI were investigated during the Fur Farm Intelligence Project. Data is from Final-Nail.com, with updates made to several entries based on the latest information available.

2007 USDA mink farm statistics: Nine farms.
Total number of animals: 55,800
Average farm size: 6,200

"It is estimated that there are presently about 20 fox farmers in the state." (1998)
"Most of the fox farms are located in the Lower Peninsula." (1998)

Bath

Jack Brower Fur Farm
15011 Chandler Road
Bath, MI 48808
Notes: Farm may be closed (confirmation needed).

Berrien Springs

Fox Haven
1806 E. Hinchman Road
Berrien Springs, MI 49103
Contact: James E. & Judith Brown
Notes: Fox farm.

Lemon Creek Fox Ranch
2224 E. Lemon Creek Road
Berrien Springs, MI 49103
Contact: William V. & Norma Kechkaylo
Notes: Fox farm. At same address, Wickelwood Kennels.

Channing

Robert Roell & Sons
N11218 State Highway 95
Channing, MI 49815
Contact: Robert Roell, Kenneth Roell, David Roell
Notes: There are two large farms south of Channing on State Highway 95; east side of road.

Gladstone

Sturdy Mink
5218 18.9 Lane
Gladstone, MI 49837
Phone: (906) 786-7835
Contact: Robert & Rita Sturdy
Notes: Large fur farm. Entrance located off of 19th Lane, about 1/2 mile west of County Road 426/Michigan 5/G38.

Harris Township

Jander's Fur Farm
N17725 County Road 551
Harris Township, MI 49807
Contact: Gregory Jander
Notes: Located at northwest corner of 551 and Dump Road Number 44.

Lansing

Steve Bursian
Michigan State University
Department of Animal Science
2209C Anthony
East Lansing, MI 48824
Phone: (517) 355-8415
Fax: (517) 353-1699
Notes: MSU's Dept. of Animal Science received \$20,000 grants from Fur Commission USA in 2007 and in 2006. Dr. Bursian also received a \$20,000 grant in 2005 ("Research on Nutrition, Toxicology, Behavior and Management of Mink"). Dr. Bursian used to work with now-retired fur industry researcher Richard Aulerich. MSU used to operate an Experimental Fur Farm (located on Jolly Road), which may still be open.

Leonidas

Dale Hiatt
31765 M-66 or 30985 Covey Road
Leonidas, MI 49066
Notes: Fox farm. Farm may be closed (confirmation needed).

Marshall

Natural Fibers
17519 L Drive South
Marshall, MI 49068
Contact: Joe & Marie McFadden
Notes: Fox farm. Farm may be closed (confirmation needed).

Menominee

JET Mink Ranch
N2119 Bay De Noc Drive
Menominee, MI 49858
Phone: (906) 863-3113
Notes: Large fur farm. Bay De Noc Drive is also known as Old US 41. Farm is located at southwest corner of Bay De Noc and 5.25 Lane, west of US 41.

Powers

Pipkorn, Inc.
W4503 US Highway 2
Powers, MI 49874
Phone: (906) 497-5725
Contact: Thomas D. Pipkorn, Steve Pipkorn
Notes: Located between Klubla Lane and Quarry Road K.5; south side of highway. Two clusters of sheds, 1/2 block apart. Second cluster at end of driveway, SE of the house.

Sand Lake

Fisk Fox Farm
11576 Sprague
Sand Lake, MI 49343
Phone: (616) 984-5564
Contact: Douglas R. and Diane Fisk
Notes: Fox farm.

Shelbyville

Van Elderen Bros.
2345 6th Street
Shelbyville, MI 49344
Michael Van Elderen
Notes: New address. Previously published address for Van Eldern Farm was "8th Street, just north of 112th Avenue, Martin MI". This address may be incorrect, or for another farm.

Traverse City

Mink farm
2495 Phaneuf
Traverse City, MI 49686
Contact: Brian Fisher
Notes: Farm may be closed (confirmation needed).

Wayland

LeFebre's Mink Farm
1260 146th Avenue
Wayland, MI 49348
Contact: Randall J. LeFebre
Notes: Farm may be dosed (confirmation needed).

Scholten Fur Farm (Scholten Feeds)
260 - 139th Avenue
Wayland, MI 49348
Phone: (269) 299-2144
Contact: John Scholten
Notes: Large fur farm.

MINNESOTA

No fur farms in MN were investigated during the Fur Farm Intelligence Project. Data is from Final-Nail.com, with updates made to several entries based on the latest information.

Mink farms (2007): 23
Total number of mink: 250,500
Average farm size: 10,891

Annandale

Davidson Fur Farm
10739 30th Street NW
Annandale, MN 55302
Phone: (320) 274-8837
Contact: Henry Davidson
Species: Fox

Big Falls

Big Falls Mink Ranch
Highway 6
Big Falls, MN 56627
Phone: (218) 276-2467
Contact: Carl Larsen
Species: Mink.
Notes: Located approx. 5 miles south of downtown Big Falls, on the Big Fork River.

Bovey

Louis Bauml
21596 County Road 447
Bovey, MN 55709
Species: Fox.
Notes: Located on south side of road.

Brownton

Petersen Fur Farm
10587 Tagus Avenue
Brownton, MN 55312
Phone: (320) 328-5369
Contact: Sheridan & Barbara Petersen
Species: Mink.
Notes: Located just south of 108th Street; west side of road. Farmer reported having alarms in sheds, 1999.

Buffalo Lake

Randall Knudsen
52655 780th Avenue
Buffalo Lake, MN 5532
Species: Mink.

Chandler

Gunnink Fur Farm
446 80th Avenue
Chandler, MN 56122
Phone: (507) 677-2223
Contact: Calvin & Alison J. Gunnink
Species: Fox.

Cyrus

Jergenson Mink Ranch
14747 380th Avenue
Cyrus, MN 56323
Phone: (320) 795-2487
Contact: Duane Jergenson
Species: Mink.
Notes: Located north of 150th Street/Township Road 144. West side of road.

Detroit Lakes

Bob's Mink Ranch
28603 State Highway 34
Detroit Lakes, MN 56501
Phone: (218) 847-8407
Contact: Robert R. Sonnenberg
Species: Mink.
Notes: Large farm. Located east of Detroit Lakes city center, north of highway. At same address: Minnesota Fur Breeders, and S & S Feed Company.

Hillcrest Mink Ranch
28774 State Highway 34
Detroit Lakes, MN 56501
Contact: Kent Disse, George Disse, Glen Disse
Species: Mink.
Notes: Located across street from Bob's Mink Ranch.

Keith Sonnenberg
30786 State Highway 34
Detroit Lakes, MN 56501
Phone: (218) 847-5490
Species: Mink.
Notes: Located on north side of road.

fur farm
320 Avenue
Detroit Lakes, MN 56501
Notes: Located at end of road, entrance off of State Highway 34.

Castle - Lehmann, Inc.
41835 County Road 126
Detroit Lakes, MN 56501
Phone: (218) 847-5065
Contact: Gary L. Lehmann
Species: Mink.
Notes: Located between White Pine Road and E. Long Lake Road; south side of road.

Gill Gigstead
17296 County Road 29
Detroit Lakes, MN 56501
Phone: (218) 847-8059 or (218) 847-7068
Contact: Gill Gigstead
Species: Mink.
Notes: Farm may be closed (investigation needed).

Hinkley

Gary Klein Fur Farm
17827 Carnie Road
Hinkley, MN 55037
Phone: (320) 384-6688
Contact: Gary E. & Ann Klein
Species: Mink.
Notes: Located north side of road.

Kroschel Mink & Stock Farm
2937 330 Avenue
Hinkley, MN 55037
Phone: (320) 384-6976
Species: Mink.
Contact: Hugo & Fran Kroschel

Howard Lake

Latzig Mink Ranch (Lakeside Ferrets)
809 County Road 7 SW
Howard Lake, MN 55349
Phone: (320) 963-3594
Notes: Located just north of 10th Street SW.

Kasota

Vogt Fur Farm
205 (Donald) or 210 (John) Elm St.
Kasota, MN 56050
Donald & John Vogt
(507) 931-2829
Species: Mink.
Notes: Located in NW corner of town, between railroad tracks and Minnesota River, at end of E. Elm Street. Street numbers previously unpublished.

Le Center

Kavan Ranch
22802 Lexington Road
Le Center, MN 56057
Species: Mink.
Notes: Located north side of road, just east of 229th Avenue.

Litchfield

Warner's Westside Fur Farm
59483 Csa h 11
Litchfield, MN 55555
Phone: (320) 693-6547
Contact: Steve & Linda Warner
Species: Fox.

Little Falls

J&S Mink
13472 Airport Rd.
Little Falls, MN 56345
Stephen M. Litke
Status: Evidence points to active, 2009.
Species: Mink.
Notes: Located north of the Little Falls-Morrison County Airport; east side of road. Street number previously unpublished.

Luverne

Ehde Brothers Fur Farm
County Road 8
Luverne, MN 56156
Phone: (507) 283-9747
Contact: Arthur Ehde
Species: Mink.
Notes: Located at southeast corner of County Road 8 and Township 124, northeast of Luverne.

Minnesota City

Garvin Brook Fox Ranch
Rural Route 1
Minnesota City, MN 55959
Species: Fox.
Notes: Address unknown.

Morris

Pomme De Terre Fur Farm
County Road 70
Morris, MN 56267
Phone: (320) 795-2729
Contact: Robert L. Jergenson
Species: Mink.
Notes: Located on County Road 70, approx. 1 mile east of US Highway 59, on the Pomme de Terre River.

Nisswa

Fox Farm
1476 Cty Rd 29
Nisswa MN 56468
(218) 568 5560
Status: Uninvestigated.
Species: May be a fox farm.
Notes: Address is listed on the business entity filing for the North Central Fox Producer's Association.

North Branch

North Branch Fur Farm
County Road 15
North Branch, MN 55056
Phone: (651) 674-4721
Contact: Gerald & Joyce Strenger; Gene & Kadine Rabel
Species: Mink.
Notes: Located at NW corner of Lincoln Road and County Road 15.

North Saint Paul

Heger Company
2536 E. Seventh Avenue
North St. Paul, MN 55109
Phone: (651) 777-2701
Contact: Dean Armstrong, Gregg 'Whitie' Johnson
Notes: Fur farm feed supplier.

Okabena

Schmidt Mink Ranch
37110 800th Street/County Road 12
Okabena, MN 56161
Phone: (507) 853-4572
Contact: Leonard Schmidt
Species: Mink.
Notes: Located just east of 370th Avenue.

Ottertail

Richard Dorow Mink Farm (Custom Fleshing Inc.)
31727 State Highway 108
Ottertail, MN 56571
Phone: (218) 367-2870
Species: Mink.
Contact: Richard & Gloria Dorow
Notes: Located on south side of road.

Randolph

Doug Anderson Mink Farm
4515 292nd Street E.
Randolph, MN 55065
Phone: (507) 263-2219
Species: Mink.
Notes: Located north side of road, east of Divers Path/railroad tracks.

Richmond

Lang's Mink Farm
19013 225th Street
Richmond, MN 56368
Phone: (320) 597-3400
Status: Confirmed open, 2009.
Species: Mink.

Rochester

Zumbro River Fur Farm
4625 West River Road NW
Rochester, MN 55901
Phone: (507) 529-8164
Contact: Scott A. Stevens, Marian C. Stevens, Larry N. Stevens.
Species: Mink.
Notes: West River Road NW is also known as County Road 133.

Sauk Centre

Royal Oak Mink Ranch
20452 County Road 2
Sauk Centre, MN 56378
Phone: (320) 352-6866
Contact: Steve and Colleen Thang
Species: Mink.
Notes: Located on north side of road, at 205th Avenue.

Vergas

Wenzel Soland
31247 County Highway 130
Vergas, MN 56587
Phone: (218) 342-2545
Species: Mink.
Notes: Located north side of road, just west of 315th Avenue.

Schultz Fur Farm
31829 County Road 130
Vergas, MN 56587
Phone: (218) 342-2501
Contact: Arland & Karrie Schultz
Species: Mink.
Notes: Located north side of road, east of 315th Avenue. One of the oldest fur farms in the country, founded 1928.

Warroad

Heinen Mink Ranch
33091 620th Street
Warroad, MN 56763
Phone: (218) 386-1194
Contact: George Heinen, Jr.
Species: Mink.
Notes: Located north of State Road 11.

MISSOURI

Mid-Missouri Fox Farm
12640 Derstler Road
Richmond, MO 64085
Species: Fox.
Notes: Located on west side of road, north of railroad tracks.

SKY HALSEY'S SILVER FOX RANCH MARTINSDALE, MONTANA



Sky Halsey's fox farm
Martinsdale, MT

Received anonymously.

"We entered Sky Halsey's Silver Fox Ranch and are submitting the following info:

*The farm is open

*There are approx. 6 rows of 15 pens, each housing one fox. This puts the approximate number of fox in outdoor pens at 100.

*There are three sheds to the west and north of the fox pens. Due to activity around the property, we were unable to determine the contents of the sheds. One or more of them is likely to hold horses (many horses were on the property).

*The fox pens are not in view of the house.

*The property is extremely difficult to access. From the front, all points of access were visible from the house (irrelevant for a night-time visit). We hiked over two miles from the rear. Approaching proximity to the sheds, we traversed dense marsh, and even denser brush, before accessing the pens from the east.

Photos are being submitted with this report.

We would like to highlight to any future visitors of Sky Halsey's Silver Fox Ranch: The most difficult part is getting close to the property. Once you have made it to the pens, the rest of your visit – in whatever form it may take – will be a simple endeavor.

Anon"

Fraser Fur Farm Ronan, MT

Received anonymously.

"In September, 2009, word circulated an investigation was sought for a major fur industry expose. The target: Fraser Fur Farm, largest wildcat farm in the country.

North of Missoula, tucked off a small road east of downtown Ronan, are the cages that may imprison more lynx than exist in the wild in the entire state. Despite it's significance, it is possible no one from the animal liberation movement had seen the inside of Fraser Fur Farm. The only recorded account of animal liberators getting close came in a brief mention in Strong Hearts, Rod Coronado's jailhouse zine. We set out for Ronan, MT, to verify the farm was open, confirm the species and numbers of animals, photograph the captives, map the farm's layout, and release the info to the public.

While most fur farms are easily accessed, Fraser's was an exception. It was immediately clear why help was being sought – this was one of the few farms not visible from the road, unable to be investigated without breaching property lines, and once inside: incredibly difficult to gain access to animals without being in view of a house.

A pre-investigation nighttime visit found the farm sat at the end of a dirt driveway off Terrace Lake Rd. The first visit we stayed to the distant perimeter, familiarizing ourselves with the layout. The outline of cages and rattle of large animals hinted at what lay in the shad-

ows, just out of sight. This level of preparation was necessary because to obtain the documentation we sought, a nighttime visit was insufficient. We would have to access the farm mid-day.

The next morning we parked in a residential neighborhood off Timberlane Road, at what we approximated was a point one mile due south of the farm. Our nighttime survey had found two houses on site, making unsafe any attempt at approaching from the front. Gunshots of hunter's echoed in the forest around us, and we entered the woods. In short time we found the faint outline of a trail, following it along a fence for one mile until we came into a clearing. Our shot-in-the-dark calculation had bore fruit: we were precisely at the rear of the Fraser Fur Farm.

At the only sliver of an angle not visible to either house, we emerged from the forest at the end of a long shed. We were met with the stare of a large, caged lynx. As majestic as imagined, the lynx seemed to have fallen through the cracks of time, pacing endlessly in its cage, waiting for the freedom just out of its reach. We were now two of the only people in the U.S. to ever lay eyes on a live lynx.

We surveyed four sheds and one long row of lynx pens. Available information put the animals held at Fraser as mink, bobcats, and lynx. Four shed housing mink were found to be empty, and it is possible the farm no longer imprisons mink. We were unable to confirm the presence of bobcats, but many sheds were not inspected. One long row of pens held approximately 50 lynx; pos-

sibly more than exist in the wild.

We heavily documented the farm on video and with still photos. The documentation was submitted anonymously to aboveground contacts. We hope they will make these images – which may be the only existing photos of captive U.S. lynx – available to the public.

A final word on this farm: There would be no easy replacement – if any at all – for lost lynx breeding stock. Only one other farm in the U.S. (Gunnink Fur Farm) is confirmed to house lynx. More than any other animal raised for fur, the loss of irreplaceable lynx breeding stock would very likely be the end of this farm, and perhaps lynx farming in the U.S. Lastly, the person to liberate the captives of Fraser Fur Farm will have one historic accomplishment to their credit: possibly doubling the wild lynx population in Montana.

Thousands of us. Only one Fraser Fur Farm. Do the math.

Anonymous"

Inside Fraser Fur Farm

Largest lynx farm in the U.S.



MONTANA

Total number of mink imprisoned: 31,100
Average number of mink per farm: 3,888

Mink farms in 2007: 8
Number confirmed as open, or appearing active:
4 (mink), 1 (fox).
Newly discovered farms confirmed: 0
Newly discovered farms uninvestigated: 5
Farms found closed or not at their published
address: 1
Mink farms yet to be discovered: 4+

Montana has 14 bobcat/lynx farms licensed by the
Department of Fish Wildlife and Parks as "fur
farms" although these animals are raised for vari-
ous purposes including pets, attractions, urine,
trophies, and pelts. One (as yet undiscovered)
fur farm reported pelting 6 lynx and 130 bobcats
in 2008.

Conrad

Louis Mink
Conrad, MT
(406) 278-3918
Status: Uninvestigated
Source: Business directory.
Notes: New, unpublished info.

Darby

Behling Fox Farm
3523 McIntosh Lane
Darby, Montana 59829
(406) 821-4410
Status: Uninvestigated.
Source: Montana Secretary Of State
records
Notes: New, unpublished address.

Fairfield

Worbonnot
170 9th Ln NE
Fairfield, MT
(406) 467-2985
Status: Uninvestigated
Source: Business directory.
Notes: New, unpublished info.

Flaxville

Marshall & Nancy York
RR 1 Box 16a
Flaxville, MT
(406) 783-5388
Status: Uninvestigated
Source: Business directory.
Notes: New, unpublished info.

Hamilton

Rocky Mountain Fur Company
1477 US Hwy 93 South
Hamilton, MT 59840
Phone: (406) 363-6789
Dan J. Huggans
Status: Confirmed open, 2009.
Species: Mink & fox.
Notes: West side of highway. Set far back from the
road. Sheds at a distance from the house.

Hobson

Henke Mink Ranch / Mountain View
167 Antelope Cr Rd.
Hobson, MT
(406) 423-5542
Richard & Darlene Henke
Status: Inconclusive.
Species: Mink.
Notes: Very remote location. Dirt road. Presence
of structures resembling mink sheds confirmed.
10 miles SW of Hobson. Previously published ad-
dress of 145 Trout Springs Drive. Several houses
& trailers on site.

Libby

Pipe Creek Mink Ranch
5131 Pipe Creek Rd
Libby MT 59923
Mary Ann Grenfell
Status: Uninvestigated.
Source: Internal fur industry documents.
Notes: New, unpublished info. Satellite
images show possible mink sheds at this
location. Internal fur industry documents
indicate this farm is active as of 2009.

Martinsdale

Sky Halsey's Silver Fox Ranch
6913 US Highway 12 East
Martinsdale, MT 59053
Phone: (406) 572-3358
Status: Confirmed open, 2009
Species: Fox.

Notes: Over 100 black fox in free-standing cages.
North side of road. Set far back from the road.
Surrounded on two sides by dense foliage and
swampland.

Ronan

Fraser Fur Farm
1348 Terrace Lake Road
Ronan, MT 59864
Phone: (406) 676-3177
Corey & Kathy Richwine, S & I Fraser
Status: Confirmed open, 2009.
Species: Bobcat, lynx, & fox. At least four sheds
formerly housing mink found empty, but farm may
still house this species.
Notes: Largest cat farm in the country. May house
more lynx than exist in the wild in the entire state.
Two houses on property. Farm not visible from the
road. Southern cluster of sheds found to be empty.
One long row of lynx cages and numerous sheds.

Superior

845 Southside Rd
Superior, MT
David Campbell
Status: Confirmed open, 2009.
Species: Mink.
Notes: 17 sheds. Very close to I-90. First driveway
on left after bend, when Southside Road crosses
under I-90 going from north to south.

NEBRASKA

Colon

Fesler Fur Farm
Colon, NE
(402) 647-2755
Jack L. Fesler
Status: Uninvestigated.

Elkhorn

Schering Plough Animal Health
21401 West Center Rd.
Elkhorn, NE
Status: Uninvestigated.
Species: Mink.
Notes: Mink research. Schering Plough markets
pharmaceuticals for the fur industry. Last available
USDA report lists 216 mink held at this location
(1999).



ROCKY MOUNTAIN FUR COMPANY
HAMILTON, MT



HENKE FUR FARM
HOBSON, MT

Scribner

John W. Smeal
963 County Road F
Scribner, NE 68057
(402) 664-2202
Status: Confirmed open, 2009.
Species: Fox.
Notes: Fox housed in indoor sheds. Dirt road runs from CR-F to the sheds.

NEW HAMPSHIRE

Richard Gauthier
845 Center Road
Lyndeborough, NH 03082
Phone: (603) 654-2904
Contact: Richard and Patricia Gauthier
Species: Mink & fox.

NEW YORK

No fur farms in NY were investigated during the Fur Farm Intelligence Project. Data is from Final Nail.com, with updates made to several entries

Schering-Plough Animal Health Division R&D complex
Elkhorn, NE

Received anonymously.

“Approximately 10 years ago, a small group of us became aware of fur industry research occurring at the animal pharmaceutical R&D complex at 21401 West Center Road, Elkhorn NE. This is my account of that visit, which I hope is useful to your project.

The complex, which is the main testing facility for Schering-Plough’s animal pharmaceutical division, is on a very busy road on the edge of Elkhorn, a suburb of Omaha. The property is made up of numerous laboratory buildings and sheds housing animals. It is surrounded by fields of grass, which aided our ability to stay out of sight of security patrols and make notes of the facility’s layout before deciding what buildings to inspect more closely.

We moved counter-clockwise around the fence, looking for any shed that may contain mink. We observed the security vehicle patrols, and when a window of opportunity opened, we darted into the complex to inspect individual sheds. We found huts holding birds, and a cow barn, among others species. We were primarily focused on the mink,

being that we did not have homes arranged for irreversibly domesticated, non-native animals. There are numerous laboratory buildings that we felt certain held animals, but because employee activity was around the clock, we were unable to investigate these.

After coming nearly 360 degrees around the property without finding a mink shed, we ended at the northeast corner where we found a cluster of huts. Inside, we found at least a dozen dogs. These huts are literally feet from Center Road.

Our look at this complex was not 100% exhaustive, but we believe that if there were an outdoor mink shed, we would have discovered it. USDA documents confirm there were mink held during the year of our visit, and our assessment is that if the mink were there, they were held indoors, in one of the many laboratory buildings we did not investigate.

I do not have any current information on this location, and do not know if Schering-Plough still markets mink vaccines. Regardless of this, this location is worth the attention of activists, if for no other reason than that it is a massive animal research facility guilty in the deaths of many hundreds or thousands of animals annually.”

Bloomfield

Reader Fur Farm
7795 State Route 5/20
Bloomfield, NY 14469
Phone: (585) 657-6249
Contact: Robert Reader
Species: Mink.
Notes: Address may be incorrect (confirmation needed).

Gerry

Main Mink Ranch
Route 60
Gerry, NY 14740
Phone: (716) 985-4104
Contact: Austin Main
Species: Mink.
Notes: Located approx. 1 mile north of town center.

Hamburg

Peters Fur Farm
5681 Southwestern Blvd.
Hamburg, NY 14075
Phone: (716) 649-2737
Contact: David Peters
Species: Mink.
Notes: Southwestern Blvd. is also known as State Road 20; located between Pleasant Ave. and Amsdell Road, on south side of road.

New York City

The American Fur Merchants Association
224 West 30th Street, Suite 705
New York, NY 10001
Phone: (212) 564-5133
Fax: (212) 643-9124
Contact: Steve Mechutan, President; Allen Soifer, Vice President; Helmut Rothe, Treasurer
Notes: At same address: Fur Merchants Employers Council

Spencertown

Nettleton Mink Farm
12 Slate Hill Road
Spencertown, NY 12165
Species: Mink.
Notes: Farm may be closed (confirmation needed).

Victor

Bennett Fur Farm
Bennett Road (1939 Bennett Road?)
Victor, NY 14564
Contact: Roger Bennett
Species: Mink.
Notes: Large farm. Located on both sides of Bennett Road, between County Road 39 and Strong Road.

Fur Farm
County Road 64, south of the intersection of Bennett Road & CR 64
Victor, NY 14564
Notes: Located just south of the Bennett Fur Farm.

Winthrop

Liberty Fur Farms
County Route 53
Winthrop, NY 13697
(alternate address: 319 Finnegan Road, Brasher Falls, NY 13613)
Phone: (315) 389-5700
Contact: Thomas J. & Helen Liberty
Species: Mink.

NORTH CAROLINA

Harper Mink Ranch
2608 NC Highway 22 42
Bennett, North Carolina 27208
(336) 581-3316
Status: Uninvestigated
Source: Business directory.
Notes: New, unpublished info.

NORTH DAKOTA

Arnegard

Schultz Fur Farm
13392 29th Street NW
Arnegard, ND 58835
Phone: (701) 586-3583
Contact: Larry Schultz
Species: Fox.
Notes: Address may be incorrect (investigation needed).

Devil's Lake

North Central Fox Producer's Association
7545 Highway 2
Devil's Lake ND 58301
Mike Liane
Status: Uninvestigated.
Species: Possibly a fox farm.
Notes: New, unpublished info. The organization exists "to educate fox farmers and promote fur industry, fox farming". Mike Liane is likely to also be a fox farmer.

Lidgerwood

Louis Wohlwend
9590 150th Avenue SE
Lidgerwood, ND 58053
Species: Fox.
Notes: Farm may be closed (investigation needed).

OHIO

No fur farms in OH were investigated during the Fur Farm Intelligence Project. Data is from FinalNail.com, with updates made to several entries based on the latest info.

Mink farms in 2007: 9
Total number of mink imprisoned: 92,400
Average number per farm: 10,266

Alliance

Jorney Mink Ranch
22199 Center Road
Alliance, OH 44601
Phone: (330) 525-7655
Contact: George Journey, Justine Journey
Species: Mink.
Notes: Located on the south side of road, between S. Mahoning Avenue and Homeworth Road/401.

Antwerp

Darrell Robbins
Rural Route 1
(alternate address: 3262 Road 204)
Antwerp, OH 45813
Phone: (419) 258-6792
Species: Fox.
Notes: Farm may be closed (confirmation needed).

Bellville

Circle R Fox Ranch
1895 Riggle Road
Bellville, OH 44813
Contact: William B. Ridenour
Species: Fox.
Notes: Located just east of CR-379.

Fort Recovery

Schmitt Fur Farm
1038 State Route 119
Fort Recovery, OH 45846
Phone: (419) 375-4192
Contact: David S. Schmitt
Species: Mink.
Notes: Large farm. Located just east of downtown Fort Recovery, on the south/east side of road.

Hicksville

Browns Fox Ranch
9477 Hicksville Edgerton
Hicksville, OH 43526
Phone: (419) 542-8238
Contact: Kenton & Sandi Brown
Species: Fox & mink.
Notes: Farm may be closed (confirmation needed).

Kenton

Silver Gates Fur Farm
17822 Township Road 104
Kenton, OH 43326
Contact: Kim Auger
Species: Mink.
Notes: Farm may be closed (confirmation needed).

Massillon

Tonns Mink Farm
3270 Pigeon Run Road SW
Massillon, OH 44647
Phone: (330) 833-4972
Contact: Dennis Tonn
Species: Mink.
Notes: Located on the east side of road, just north of State Road 30.

Medina

Mohoric Mink Ranch
7035 Chatham Road
Medina, OH 44256
Phone: (330) 725-0565
Contact: Thomas M. & Cheryl Mohoric
Species: Mink.
Notes: Farm reported closed (confirmation needed).

Orrville

Bekaert Corporation
322 East Pine Street
Orrville, OH 44667
Phone: (330) 683-5060
Fax: (330) 683-0446
Notes: Among this company's many steel-wire products, Bekaert manufactures Weldmesh mink cages. Manufacturing plants also in Van Buren, AR and Shelbyville, KY.

Ravenna

Haska Fur Farms
6991 Hughes Road
Ravenna, OH 44266
Phone: (330) 296-3954
Contact: Robert R. Haska
Species: Mink.
Notes: Large farm. Located on the north side of the road, just east of Rock Spring Road.

OREGON

Total mink imprisoned (kits + breeders): 344,800
Average farm size: 19,156

Number of mink farms (2007): 18
Number confirmed as open, or appearing active: 15
Newly discovered farms confirmed or showing evidence of being open: 0
Newly discovered farms uninvestigated: 5
Farms found closed or not at their published address: 10
Farms yet to be discovered: 3+

Astoria

Stunkard Fur Farm
41653 Old Highway 30
Astoria, OR 97103
Elna & Marvin Stunkard
Status: Uninvestigated.
Source: Oregon Secretary of State's Office
Notes: New, unpublished info. Satellite images show possible mink sheds.

Autio Company
93750 Autio Loop (FFES)
Astoria, OR
(503) 458-6191
(503) 458-6409 (fax)
Status: Uninvestigated.
Notes: Fur farm equipment supplier. Sells grinders, mixers, and electric feed carts.

Ylipelto's Fur Farm
92659 Simonsen Loop Road
Astoria, OR 97103
Veikko & Eeva Ylipelto
Status: Confirmed open by media reports, 2009.
Species: Mink.
Notes: Located on east side of road.



ARRITOLA MINK RANCH
MOUNT ANGEL, OR



JEFFERSON FUR FARM
JEFFERSON, OR



KRULL, MASOG, SLACK
LEBANON, OR



Western Star Fur Farm

92326 Conroy Road

Astoria, OR 97103

Phone: (503) 458-5167

Carl & Patricia Salo

Status: Inconclusive. Visually confirmed presence of mink sheds.

Notes: Located on east side of road, north of School House Road.

Fur Farm

40700 Savola Road

Astoria, OR 97103

Status: Inconclusive. Visually confirmed presence of mink sheds.

Notes: At end of dead-end road, N side.

Glade Wilkinson

36089 Binder Slough Lane

Astoria, OR 97103

Status: Confirmed open, 2009.

Notes: Mink farm and fur feed supplier. This address is listed as the Oregon feed production site for Northwest Farm Feed (2002). Located east of Youngs River Road, on the water. House at a distance from the sheds.

Boring

Weisdorfer Fur Farm

11330 SE 272 Avenue

Boring, OR 97009

Phone: (503) 663-3070

Leo D. & Dawn Y. Weisdorfer

Status: Inconclusive. Business records place business as "active", 2009.

Species: Mink.

Notes: Located at corner of SE 272nd Avenue and SE Haley Road. Large SW shed (comprising approximately 1/3 of farm) gave the strong appearance of being empty. Very large sheds with dozens of rows each. Farm is most visible via a bike path running along farm's W side. One collapsed shed.

Gold Hill

Higgins New Horizon Farm

5162 Sams Valley Rd

Gold Hill, OR 97525-9624

Status: Uninvestigated.

Source: Business directory.

Notes: New, unpublished info. Listed as "agave production and fur farming". Species unknown.

Jefferson

Jefferson Fur Farm

1477 Talbot Road SE

Jefferson, OR 97352

Phone: (541) 327-2275 or (541) 327-2420

Contact: Michael J. Posch, Joseph E. Posch, Michael P. Posch, James F. Posch, Daniel S. Posch, Mary Posch

Status: Confirmed open, 2009.

Species: Mink.

Notes: Small farm. Located on east side of road, north of Miller Road SE. Best vantage point from White Lane. White mink.

E.H. Webster

Approximately 1059 2nd St

Jefferson, OR

Status: Confirmed open, 2009.

Species: Mink.

Notes: Farm previously published as a fox farm. Only mink seen.

Lebanon

Following three farms all located on one property, at corner of W. Oak Street & Fur Road; west of the Lebanon State Airport.

Arnold Krull

32564 Fur Rd.

Lebanon, OR

(541) 258-2510

Arnold L. & Leo J. Krull

Status: Evidence points to active, 2009.

Masog Mink Ranch

36232 W. Oak Street

Lebanon, OR 97355

Lou Masog, Duane Masog

Status: Evidence points to active, 2009.

Slack Farms

32600 Fur Road

Lebanon, OR 97355

Phone: (541) 258-2495

Contact: Richard L. Slack, Mark E. Slack, Dale T. Slack

Status: Evidence points to active, 2009.

Mount Angel

Arritola Mink Ranch

12303 Mt Angel-Gervais Road

Mount Angel, OR 97362

Phone: (503) 845-6272

Richard E. & Charlene L. Arritola, Lance C. & Jodi L. Arritola

Status: Confirmed open, 2009.

Species: Mink.

Notes: Heavily fortified farm. Tall razor wire fence, spotlights, and second fence inside first. Set far back from road. On railroad tracks. Sheds NE of farm are greenhouses.

Clem Ruef & Sons (also known as Oregon Mink / Ormink)

11658 Baron Road NE

Mount Angel, OR 97362

Phone: (503) 845-2800

Clement J. Ruef, Robert W. Ruef, Donald F. Ruef

Status: Confirmed open, 2009.

Species: Mink.

Notes: Located just north of Arritola Mink Ranch. Also heavily fortified. Best viewed via railroad tracks on E side.

Ruef's Fur Ranch

12305 Reuf Lane

Mount Angel, OR 97362

Phone: (503) 845-2589

Contact: Max J. & Marlene Ruef

Status: Inconclusive.

Species: Mink.

Notes: Located off of W. Church Road NE. Sheds are controlled-environment sheds walled-off on all sides, preventing seeing or smelling contents. Cornfield service road runs along south of farm, from near the golf course. Farm is barely visible from the road.

Oregon City

Eric Darvis

18780 Cntl Pt Road, Unit 108

Oregon City, Oregon 97045

(503) 656-1454

Status: Uninvestigated.

Source: Business directory

Notes: New, unpublished info. Eric Darvis is also credited for owning a farm in Benton City, WA, which was investigated and found to have no animals on site. Address above is listed in a business directory as "Fur Bearing Animal Farm". Uninvestigated. Previously published name of "Eric Daruis".

Pendleton

Brad T. Wheeler
43277 Coombes Canyon Rd
Pendleton, OR 97801
(541) 276-0040

Status: Uninvestigated. Business records list farm as "active".

Source: Oregon Secretary of State's Office
Notes: New info. This farm was reported by the media to have closed in late-1990s / early-2000s, yet business records list farm's status as "active".

Scotts Mills

Delany's Fur Ranch
21238 Hazelnut Ridge Road
Scotts Mills, OR 97375
David Delany, Judy Kandi
Status: Inconclusive.

Seaside

Diehl-Filliger
84703 Junction Rd.
Seaside, OR 97138
Status: Uninvestigated. Records show business as "active", 2008.
Source: Business directory
Notes: Satellite images show mink sheds. Almost directly on Highway 101.

Sublimity

Gardner Fur Farm
3701 Drift Creek Rd SE
Sublimity, OR 97385
Larry Gardner
Status: Evidence points to active, 2009.
Species: Believed to house mink. Previously listed as a fox farm.
Notes: Located on west side of road, set far back from road. House is at a great distance from the sheds.

PENNSYLVANIA

No fur farms in PA were investigated during the Fur Farm Intelligence Project. Data is from Final Nail.com, with updates made to several entries based on the latest info.

Mink farms in 2007: 11
Total number of mink imprisoned: 81,600
Average mink per farm: 7,418

Bath

Scintilla Development Company / Avecon Diagnostics
501 Grouse Drive
Bath, PA 18014
Contact: Robert L. Stephon
Notes: Provides disease (Aleutian Disease Virus) testing for mink farmers. Scintilla Development Company received a \$3,000 grant in 2007 from the Fur Commission USA.

Boyers

Oakwood Mink Farm
108 Oakwood Road
Boyers, PA 16020
Phone: (724) 735-2175
Contact: Robert & Kim DeMatteis
Species: Mink.

Carrolltown

Bogus Fur Farm
360 Theatre Road
Carrolltown, PA 15722
Contact: James Bogus
Species: Mink.

Erie

Mindek Brothers Fur Farm
4940 Shannon Road, 4937 Shannon Road
Erie, PA 16510
Phone: (814) 825-5047
Contact: Forrest J. Mindek, Nick O. Mindek, Hunter L. Mindek
Species: Mink.

Lawrence Dana Fox Ranch
9129 Station Road
Erie, PA 16510
Phone: (814) 725-1669
Species: Fox.

Greenville

James Preston Fur Farm
383 S. Good Hope Road
Greenville, PA 16125
Phone: (724) 588-5374
Contact: James L. Preston
Species: Mink.

New Wilmington

Burns Mink Ranch
119 Bend Road
New Wilmington, PA 16142
Phone: (724) 946-3125
Contact: John Burns
Species: Mink.
Notes: Farm may be closed (investigation needed).

Nicktown

Kuzar
109 Mink Farm Lane
Nicktown, PA 15762
Phone: (814) 948-5614
Contact: Steve Kuzar, Jr.
Species: Mink.

Sunbury

Richard H. Stahl & Sons Fur Farm
275 Fegley Road
Sunbury, PA 17801
Phone: (570) 286-2157
Contact: Alma M. Stahl
Species: Mink.
Notes: Fegley Road runs parallel to State Route 890, southeast of the City of Sunbury. Farm located east side of road. Spent \$207,500 on "construction, renovations, security upgrades and new machinery and equipment" in 2009.

Wyalusing

Goose Hill Fur Farm
Goose Hill Road
Wyalusing, PA 18853
Species: Mink.
Notes: Located on east side of road (set far back), south of Jenning Road.

The following PA fur farms were in business at one time. While most are likely to be closed, some of these farms may be open, and these addresses are worthy of further investigation.

HILL TOP FOX RANCH
1931 SPRINGHILL RD
PORTAGE, PA 15946
(814) 736-8210
EDWARD CHERNICKY

BROKENSTRAW VALLEY MINK FARM
RD #1
DEER LAKE PA
ALEX GINSBERG, BEN GINSBERG

CENTERVILLE MINK FARM
RD 1
LAKE ARIEL PA
GUY D HARNISH, FLOYD E WEISEL

GOLDENBLACK MINK FARMS INC
BOX 113
MOUNT POCONO PA

HILLTOP MINK FARM
RD 1
POTTSVILLE PA
KIMBER R KRISE

MEADOWBROOK MINK FARM
RD 3
LANCASTER PA
HENRY C LEARY

PEACEFUL ACRES MINK FARM
RD 1 BOX 137H
MOUNT UNION, PA 17066
WILLIAM F & Sandra YOCUM

POLLACK MINK FARM
22 NORTH CENTRE ST
POTTSVILLE, PA
S POLLACK

PURE BLACK MINK FARM
RD 5
SLIPPERY ROCK, PA

SILVER HOPE MINK FARM
RD 2
MOUNT PLEASANT, PA
THOMAS M ZAVATSKY
SAMUEL E TROUT

THE OLD MINK FARM
CEDAR LANE
BEDMINSTER PA 7947-0
PETER E GETCHELL
CATHERINE R GETCHEL

VALLEY VIEW MINK FARM
SUGAR GROVE PA
MILDRED D HARNER
YNGVE SHARNE

WALDHEIM MINK FARM
UPPER DUBLIN TWP PA
SAMUEL GLEANER

DOUBLE H MINK RANCH
215 SOUTH TENTH STREET
SUNBURY PA 17801
LAWRENCE W HART SR

FALBAC MINK RANCH
RD 1
WASHINGTON PA
CLYDE MIZE JR

HYDETOWN MINK RANCH
HYDETOWN PA
CHARLES FGULLAND
CHARLES R WEBER

MAJESTIC MINK RANCH INC
RD 1 POCONO TWP
HENRYVILLE PA

MAKIN MINK RANCH
RD 1
SIDMAN P
N STANLEY BERNFELD
LEONARD WAKE

MT PLEASANT MINK RANCH
BLOOMSBURG PA
JOYCE M HOMAN
RALPH W HOMAN

ROSE HILL MINK RANCH
SPANGLER PA
ROSE V HAMMOND

THE SILVERBLU MINK RANCH
RD 2
WEATHERLY PA
MANNY WOLF

HILL TOP FOX RANCH
RD 2 BOX 537
PORTAGE PA 15946
EDWARD CHERNICKY

SILVER KING FOX RANCH
WYNCOTE PA

CUMBERLAND VALLEY SILVER FOX & FUR FARM
SHIPPENSBURG PA
ROBERT W ADDAMS
W A ADDAMS JR

ARCH ST. EXT. FUR FARM
RD 2 BOX 650
ARCH ST EXT
BROCKWAY PA 15824
SARAH L STONEBERG

B & G FUR FARM
MOSCOW PA
ALEXANDER S BELAVITZ JR
STANLEY GURSKI

BALD EAGLE FUR FARMS
RD 3
BELLEFONTE PA
RANDELPH H HOUCK

BAUER FUR FARM
RD #1
BELLEFONTE PA
DAVID EARL BAUER
CHARLES H BAUER

BETHLEHEM FUR FARM
ROUTE 3
BETHLEHEM PA
JOHN R WERLEY
HOWARD W FISCHER

CANADOHTA LAKE
(1008 WESCHLER AVE ERIE PA)
CRAWFORD COUNTY PA
C B REEMELIN

CEDAR RIDGE FUR FARM
OLD ALLENTOWN RD
RD 1
QUAKERTOWN PA
HARRY W JONES
RAYMOND A DESROSIERS

CHERRY VALLEY FUR FARM
SPANGLER PA
J V HAMMOND

DRESHER FUR FARM
LIMEKILN PIKE
DRESHER PA
EMILY SOMIESKY

ECHO FUR FARM
PARADISE TWP PA
ALFRED VILLORESI
GERTRUDE L PRICE
JOHN VILLORESI
FLORENCE VILLORES

ENGLEWOOD FUR FARMS
RIEGELSVILLE PA
FRANK K BAUER
FRED D BAUER
J W BAUER
GH STRYKER

FAIRVIEW FUR FARM
BOSWELL PA
CASMER J SHEFTIC

GITTELMEN'S SONS FUR FARM INC
EASTON RD
NESHAMINY PA

GRIFFITH SUPPLY COMPANY & FUR FARM
413 DECKER AVE
JOHNSTOWN PA
MARY H GRIFFITH

HANZELY FUR FARM
SYKES ST EXTENSION
SYKESVILLE PA
JOHN J HANZELY
HENRY E HANZELY

KEYSTONE FUR FARM
ALLENTOWN PA
WALTER FRITCHMAN

KILLKENNY FUR FARMS, INC.
406 SR 9 NORTH
TUNKHANNOCK PA 18657
FRANK KELLY III

BEAVER MEADOW FUR FARMS

KEYSTONE SILVER BLACK FOX RANCH

MASTER FOX FUR RANCH INC

FORT LEBOEUF FOX RANCH

SEVEN COUNTY VIEW SILVER FOX RANCH

SOUTH MOUNTAIN BLACK AND SILVER FOX RANCH

VALLEY FORGE SILVER BLACK FOX RANCH

YORK VALLEY SILVER FOX RANCH

CLASSIC SILVER FOX FARMS INC-CORPORATED

GOLDEN SEAL FUR FARMS INCORPORATED

BLACK DIAMOND FUR FARM

CANADOHTA FUR FARMS

SOUTH DAKOTA

No fur farms in SD were investigated during the Fur Farm Intelligence Project. Data is from Final-Nail.com, with updates made to several entries based on the latest info.

Three mink farms in 2007
Total number of mink imprisoned: 93,900
Average number of mink per farm: 31,300

Aberdeen

Milo Pfeiffer
12998 392nd Ave
Aberdeen, SD 57401
Phone: (605) 229-0072
Species: Fox.
Notes: Located at intersection of 130th Street and 392nd Avenue.

Arlington

W. Brown Farm
45622 207th Street
Arlington, SD 57212
(605) 203 1003, (605) 983 3353, & (605) 983 4622 (fax)
Contact: Walter P. & Christine Brown
Species: Mink.
Notes: Located on north side of road, between 456th Ave. and 457th Ave. Phone numbers previously unpublished. One of the oldest farms in the country, founded 1938. Double row sheds and outdoor row pens. 15 sheds.

Armour

Kingswood Mink Ranch
39231 281st Street
Armour, SD 57313
Phone: (605) 724-2696
Contact: Charles R. Larson
Species: Mink.
Notes: Large fur farm. Located east of US Highway 281. South side of the road.

Classic Farm
38495 283rd Street
Armour, SD 57313
Von Denning, President
Les Groeneweg, Manager
Species: Mink.
Notes: Farm may be closed (investigation needed).

Clark

Clinton Clark
RR3, Box #145
Clark, SD 57225
(605) 532-5209
Species: Fox
Notes: Address may be incorrect.

Lake Preston

Mark Neilson
20464 446th Avenue
Lake Preston, SD 57249
Phone: (605) 983-5933
Species: Fox.
Notes: Located north of 205th Street.

Mina

Jo Meserve
13940 375th Avenue
Mina, SD 57451

UTAH

Total number of mink imprisoned: 705,600
Average farm size: 10,855

Number of farms (2007 USDA statistics): 65
Number investigated confirmed or appearing to be open: 63
Farms found closed (visible evidence of sheds, yet empty of animals) or not at published address: 22
Newly discovered farms: 11
Mink farms yet to be discovered: 2+

Utah has 2 active permits for fur breeding of captive-raised bobcat, lynx, and marten issued by the Utah Department of Wildlife. Animals held under this permit may be pelted or sold.

Contact: Stephen R Meserve, Jo A Meserve
Species: Fox.

American Fork

Williams Fur Farm
11240 N 6000 W
American Fork, UT
Ann & Gordan Williams
Status: Confirmed open, 2009.
Notes: 11 sheds. Dense residential neighborhood directly E of sheds. Backyards of subdivision homes connect with the farm fence.

Willow Valley Inc. aka Willard Fur Farm
7145 N 6720 W
American Fork, UT
Brent Willard
Status: Confirmed open, 2009.
Species: Mink
Notes: 13 long sheds. Very close to the northern shore of Utah Lake. House is at a distance from the sheds.

Coalville

BK Mink Ranch
551 South Main
Coalville UT 84017
Buster, Clarence & Edward Keyes
(435) 336 5904
busterkeyes@hotmail.com
Status: Confirmed open.
Species: Mink
Source: Internal fur industry documents
Notes: Newly discovered farm. Next to abandoned storefronts.

Rees' Mink Ranch
600 Icy Springs Rd
Coalville, UT
Phone: (435) 336-2437
Jacob Rees
Status: Unconfirmed. Presence of mink sheds confirmed.
Notes: At end of Icy Lane Rd, on top of a hill. One of the highest points in town. At the north end of Rees' Gravel Pit. Road leading to farm is isolated, and further unmarked roads lead into gravel pit. House is in close proximity to sheds.

Black Willow Mink
340 N. Main St
Coalville, UT
Phone: (435) 336-5513
John Adkins Jr., John Adkins III
Status: Confirmed open, 2009.
Species: Mink
Notes: E side of road. Large farm. One of the oldest mink farms in the country, founded in 1927.

Mink Farm
End of N 200 E
Coalville, UT
Status: Confirmed open, 2009.
Species: Mink
Notes: Fence around sheds. Shallow creek around south and east of property on Park Rd. Borders county fairgrounds on the west. Most visible from Park Rd. Sheds directly adjoin shallow creek on west side of fairgrounds parking lot.



NEWLY DISCOVERED MINK FARM
DRAPER, UT



NEWLY DISCOVERED MINK FARM
DRAPER, UT



BLACK WILLOW MINK
COALVILLE, UT



CAGED MINK @ UTAH MINK FARM

Dean Vernon & Sons

391 E Chalk Creek

Coalville, UT

Phone: (435) 336-2376

Contact: Dean Vernon

Status: Confirmed open, 2009.

Species: Mink

Notes: North side of road. Five sheds. Still a large farm.

Vernon Mink Farm

820 SHoytsville Rd

Coalville, UT

Phone: (435) 336-5982

Kent & NaVee Vernon

Status: Unconfirmed. Appears active. Presence of mink sheds confirmed.

Species: Believed to house mink.

Rees' Fur Farm

934 SHoytsville Rd

Coalville, UT

Dennis and Ward Rees

Status: Confirmed open, 2009.

Species: Mink

Notes: Large farm. Approximately 54,000 mink.

Fur Farm

1246 S Hoytsville Rd (address approximate)
Coalville, UT

Status: Unconfirmed. Farm is intact and had the general appearance of being operational. Presence of mink sheds confirmed.

Species: Believed to house mink.

Notes: Newly discovered farm. South of Adgel Lane. Two sheds seen off road, west side.

Draper

Fur Farm (Possibly L&F Mink Ranch)

15028 Pony Express Rd

Draper, UT

Status: Confirmed open, 2009.

Species: Mink.

Notes: Newly discovered farm. Between a storage complex and office park. Farm is very close to I-15, just south of Utah State Prison. Very tall (10+ feet) metal wall surrounding sheds. Trailer and house directly east of sheds. Empty land to the west. All sheds were completely enclosed and walled-in. Joins the Arritolla Mink Ranch as being among the most fortified farms seen during the F.F.I.P. Utah business records list a business called L&F Mink Ranch as "active", with the address of 13853 Arrow Creek Dr, Draper, UT. This address is a residence with no farm seen.

Henefer

Stephens Fur Farms

Dallan J. Stephens

2475 E Canyon Rd

Henefer, UT 84033

Status: Uninvestigated. Unconfirmed.

Species: Unknown.

Source: Final Nail #3, residential directory.

Notes: Address is unconfirmed. This farm was previously listed in The Final Nail print version with a PO Box address only.

There may be two sheds off East Canyon Rd, 3.4 miles (driving distance) from I-84. Southwest side of a dead-end, unmarked road with no other structures. New address. Uninvestigated.

Highland

Omicron Genetics

5887 W 11500 N

Highland, UT 84003

Notes: Owned by fur farmer Neil Westwood. "Performs a genetic analysis service" for other fur farms.

Notes: New address. Address is residence. Single enclosed shed at rear of property does not have the appearance of a mink shed, but does have ventilation fan installed consistent with sheds which house animals.

J & G Mink Ranch

10320 North 6400 West

Highland, UT 84003

Phone: (801) 756-5477

Glen Degelbeck

Status: Confirmed open, 2009.

Species: Mink.

Notes: Six sheds. Very residential neighborhood. Best viewed via dirt road / bike path on N side of property. Stream to the N of dirt road, parallel. House to the S of sheds. Large neighborhood park across street.

Erekson Mink Ranch

11298 North 6000 West

Highland, UT 84003

Tim Meredith Erekson

Status: Confirmed open, 2009.

Notes: 11 sheds. Located north of Highland Highway/Highway 92. Street address is approximate.



DEAN VERNON & SONS
COALVILLE, UT



REES'S FUR FARM
COALVILLE, UT



BK MINK RANCH
COALVILLE, UT



ABANDONED MINK FARM
HENEFER, UT

Hyrum

Blackridge Farms

181 E 6400 S

Hyrum, UT 84319

Phone: (435) 245-6467

Lynn R. Mathews

Status: Confirmed open, 2009

Species: Mink

Notes: Just S of Rosehill Dairy Farm. Corn field service road leading to rear of farm on south. Surrounded by solid metal wall.

Kaysville

Lodder's Mink Farm

Kaysville/Farmington, UT 84025

Chuck & Shelly Lodder

Status: Confirmed open, 2008.

Species: Mink

Notes: No house on site. Located west of intersection of Sharpshooter Drive and Fox Hunter Drive, south of the Central Davis Sewer District Wastewater Treatment Plant (2200 South Sunset Drive, Kaysville, UT 84037).

Lehi

Dane L. Dixon Mink Ranch

10725 N 8200 W

Lehi, UT

Status: Confirmed open, 2009.

Species: Mink

Notes: Many streets in Lehi have more than one name, and alternate address is: intersection of W 3200 N and N 300 W (SW corner). "Mink Operation" sign posted. House directly E of sheds. Solid metal wall fence surrounding sheds. Large field directly W of property. Adjacent to subdivision and church.

Jonsson & Sons Mink Ranch

9250 W 8170 N

Lehi, UT 84043

Status: Confirmed open, 2009.

Species: Mink

Notes: "Mink Operation" sign. Tall wooden wall around property. Across street from park / parking lot.

Fur Farm

7814 N 8730 W

Lehi, UT

Jensen

Status: Confirmed open, 2009.

Species: Mink

Notes: Newly discovered farm. "Mink Operation" sign in front yard.

Fur Farm

Intersection of W 8170 N (also known as W 700 S) and dirt road immediately W of S 2575 W

Lehi, UT

Status: Confirmed open, 2009.

Species: Mink

Notes: Newly discovered farm. No house on site. Well hidden, at end of small, unmarked dirt road. There is a long dirt construction road along S of farm (1300 or 7750 N) (as of 2009). Road is new and not reflected on maps or satellite images. Very close to new residential neighborhood. Large. Accessible via hidden dirt road on N from residential neighborhood. 20 Long sheds.

K & J Fur Farm

1440 West Main / West 73

Lehi, UT 84043

Kim Beckstead

Status: Confirmed open, 2009.

Species: Mink

Notes: Moat on W side. Very busy street. West Main Street is also known as W 8570 N (approximate address of farm: 8918 W 8570 N).

Fur Farm

7878 W 8170 N

Lehi, UT

Status: Confirmed open, 2009.

Species: Mink.

Notes: New, unpublished address. Small farm. Four long sheds. "Mink Operation" sign posted. Partially wooden/partially metal fence surrounding property. Wooden fence in front. Residential neighborhood. Very busy street. Four farms on 8170 N.

Dell Willes

600 S 400 W

Lehi, UT 84043

Dell A. Willes, J Lene Willes

Status: Confirmed open, 2009.

Species: Mink

Notes: "Mink Operation" sign posted. 12 sheds long. Trailer on site. Very busy street. Heavy fence on street side, absent on other sides. Across the street from a church.

River Jordan Mink Ranch

9330 N 10400 W

Lehi, UT 84043

Phone: (801) 766-1305

Scott Cooper McLachlan

Notes: Conflicting reports place either this or the Zimbal Minkery as the largest fur farm in the country. 100,000 mink. Located at corner of N 10400



BLACKRIDGE FARMS
HYRUM, UT



J & G MINK RANCH
HIGHLAND, UT



DANE DIXON MINK RANCH
LEHI, UT



NEWLY DISCOVERED FARM
LEHI, UT

W and W 9600 N, just west of the Jordan River. 100+ sheds. House directly N of farm. Large empty gated lot on SW side. Close to shopping center on UT -73/Main St. Two clusters of sheds. Operational center / processing & storage buildings in southern cluster of sheds, house at north.

Fur Farm

Intersection of 9600 N & 10400 W
Lehi, UT

Status: Confirmed open, 2009.

Species: Mink

Notes: Directly adjacent to the River Jordan Mink Ranch on the NW.

Lewiston

Egbert Mink

1725 W 2000 S

Lewiston, UT 84320

Gary R. Egbert

Status: Confirmed open, 2009.

Species: Mink

Bytheway Mink Ranch

2011 S 1600 W

Lewiston, UT 84320

Phone: (435) 258-5162

Ethan Bytheway

Status: Unconfirmed. Presence of one mink shed confirmed.

Notes: Single shed in rear of property.

Kevin Petersen Ranch

1560 S Main Street

Lewiston, UT 84320

Kevin L. & Kris Petersen

Status: Uninvestigated.

Notes: Satellite images show the presence of mink sheds in unlikely. Address near corner of W 1600 S.

Logan

Pace Ranch

4950 S. Hollow Road

Logan, UT 84321

Phone: (435) 245-4651

Fred & Carol Pace

Status: Unconfirmed.

Notes: No farm visible from road. Possibly dosed.

Fur Breeder's Agricultural Co-op (Logan plant)

1000 W 200 N

Logan, UT

Status: Confirmed open, 2009.

Notes: Major feed production plant. Delivers to all farms north of Morgan, as far north as Grace, ID. On SE corner of intersection, across from Texaco. One large (2 to 3 story) building at N end of property. One short and long (1 story) building S of property (garages). Second plant in Sandy.

Bohm Mink Farm

3490 W 600 S

Logan, UT 84321

Lance W. Bohm

Status: Inconclusive. Visibly confirmed four mink sheds.

Species: Mink.

Notes: Four sheds seen behind house number 3819 on N side of road. Nothing seen at 3490 W 600 S.

Sheds directly behind house. Streams on both sides of house/sheds.

Jenson Fur Farm

715 S 1000 W

Logan, UT 84321

Phone: (435) 752-0184

Cordell O. Jenson

Status: Confirmed open, 2009.

Species: Mink

Notes: Many cows on property.

Utah State University

Department of Animal, Dairy and Veterinary Sciences

North Logan Farms

1475 North 800 East

Logan, UT 84341

Status: Unconfirmed.

Species: Mink

Notes: See "Research" sidebar for complete notes on all available info on fur research at Utah State University. No mink found at this address. May be located at another satellite research station in Logan.

Morgan

Morgan County is "home to an estimated 15 active mink ranches".

Fur Farm (possibly the Ken A. Durrant farm)

1225 -or- 210 S. Morgan Valley Drive

Morgan, UT 84050

Phone: (801) 829-6539

Status: Inconclusive. Visually confirmed mink sheds.

Notes: East side of road. 10 sheds.

D J Mink, Inc.

645 N Morgan Valley Dr.

Morgan, UT 84050

Phone: (801) 829-3813

Douglas C. and Julie M. Brown

Status: Inconclusive. Secretary of State's Office lists as "active".

Species: Mink

Notes: Address is very close to a farm found at 634 N Morgan Valley Dr, which is mostly dismantled.

Could not be conclusively declared as dosed.



JENSON FUR FARM
LOGAN, UT



FUR BREEDER'S AGRICULTURAL CO-OP
LOGAN, UT



STOP SIGN OUTSIDE 7878 W 8170 N
LEHI, UT



KEITH JONSSON
LEHI, UT

L & S Fur Farm
 75 N Morgan Valley Dr.
 Morgan, UT
 Status: Inconclusive. Visually confirmed sheds.
 Secretary of State's office lists as "active".
 Species: Believed to house mink.
 Notes: Those visible from road appeared to have nesting boxes removed. Nothing smelled. Large farm. Sheds very close road. Updated address (previously listed as 220 N Morgan Valley Dr).

Tony Jones Fur Farm
 1016 South Highway 66
 Morgan, UT 84050
 Phone: (801) 829-6351
 Tony Jones
 Status: Inconclusive. Visually confirmed presence of mink sheds. Tony Jones attended a County Council meeting to support anti-fur farm protest ordinance, September 2009.
 Species: Believed to house mink
 Notes: At end of dirt road. Dirt road very east to miss / address unmarked. South of Landmark Lane, North of County Road.

Dawson Mink Farm
 50 Kippen West 2750 Lane S
 Morgan, UT 84050
 Darin Dawson
 Status: Confirmed open, 2009.
 Species: Mink

Fur Farm
 2850 S Morgan Valley Rd (approximate address)
 Morgan, UT
 Status: Inconclusive. Visually confirmed presence of mink sheds.
 Notes: Address previously published as 2130 S Morgan Valley Drive. Also houses cows.

S. Francis Fur Farm
 707 Young St
 Morgan, UT 84050
 Jeff Francis, L. Scott Francis
 Status: Confirmed open, 2009.

Seth Dawson
 84 W 200 N
 Morgan, UT
 Status: Confirmed open, 2009.
 Species: Mink
 Notes: A second Dawson farm (likely relation) operates elsewhere in Morgan. Horses on property. Borders parking lot of Goldenwest bank on W 200 N to the NW. At corner of Hwy 66. Short fence around sheds. Very small with five short sheds. One shed empty.

Fur Farm
 810 or 820 E 100 S
 Morgan, UT
 Status: Confirmed open, 2009.
 Species: Mink
 Notes: South side of road. Directly W of dirt road for Wilkinson Construction. Large field W of sheds. House N of sheds. Address previously published as 572 E 100 S.

Sargent Mink Ranch
 707 E 100 S
 Morgan, UT
 Status: Confirmed open, 2009.
 Species: Mink
 Notes: North side of road. Barbed wire fence surrounding property. Large farm.
 Address previously published as 575 E 100 S St.

Wardell Fur Farm
 2425 W. Old Highway Road
 Enterprise (just north of Morgan), UT 84050
 Contact: Gail Wardell, Jay Wardell, Wess Wardell
 Phone: (801) 876-3418
 Status: Confirmed open, 2009.
 Species: Mink
 Notes: West side of road. Visible from I-84. 30 Sheds. Short barbed wire fence around portion of property. Appears to be mostly unfenced.

Boyce Brothers Fur Farm
 860 E 525 N
 Morgan, UT 84050
 Phone: (801) 829-6024
 Bryan P. Boyce, Charles P. Boyce
 Status: Confirmed open, 2009.
 Species: Mink
 Notes: 15 sheds. S side of 525 road. Barely visible from road.

Potter Mink
 773 N 700 E
 Morgan, UT 84050
 JoAnn Potter
 Status: Inconclusive. Presence of a single mink shed confirmed.
 Species: Mink
 Notes: Located south side of road, next to Morgan City Cemetery.

Round Valley Mink Ranch
 2000 E. Rees Lane
 Morgan, UT 84050
 Stan J. Rees
 Status: Evidence points to active, 2009.
 Species: Mink
 Notes: Directly off the exit, visible from Interstate 84. Stan Rees is Chairman of American Legend Cooperative (Renton, WA). Sign reads "Rees Bros Hereforts". Large farm.



DAWSON MINK FARM
 MORGAN, UT



DILLREE FUR FARM
 STODDARD, UT



SETH DAWSON'S FARM
 MORGAN, UT



SARGENT MINK RANCH
 MORGAN, UT

Dillree Fur Farm
1835 W. Stoddard Lane
Morgan, UT 84050
Phone: (801) 829-6368
Smokey & Barbara Dillree
Status: Evidence points to active, 2009.
Species: Mink

Notes: South side of road. Mailbox adorned with a wooden mink sculpture. Two other clusters of sheds nearby, one of which may be part of Dillree farm. Possibly three farms on this road.

Fur Farm
Property next to 1835 W. Stoddard Lane
Morgan, UT 84050
Status: Inconclusive. Visually confirmed mink sheds, 2009.
Species: Believed to house mink.
Notes: Property west of Dillree Fur Farm.

Largent Fur Farm
2001 W Stoddard Lane
Morgan, UT 84050
Theodore Largent
Status: Inconclusive. Visually confirmed mink sheds, 2009.
Species: Believed to house mink.
Notes: Southwest of Dillree Fur Farm.

Fred N. Thurston
1340 Island Rd
Morgan, UT 84050
(801) 829-3858
(801) 829-6327
Status: Confirmed open, 2009.
Species: Mink
Notes: Newly discovered farm. At end of Island Rd.

Oakley

Fur Farm
Franson Lane
"South Summit" (county?), UT
(Possibly Oakley, UT)
Status: Uninvestigated.
Species: Mink
Notes: New info. Farmer reported suspicious vehicle at mink farm on Franson Lane in "South Summit", UT, late-2009. The only known "Franson Lane" is in Oakley, UT 84055. 46,000 mink pelts were produced in Summit County, 2008. No sheds seen via satellite images.

Payson

Chad Fenn
7528 S 5600 W
Payson UT 84651
Terrianne Fenn, wife
Status: Uninvestigated.
Species: Mink.
Source: Internal fur industry documents, 2009.
Notes: Possible farm at approx. 8900 S 5600 W, close to the above address. Evidence that Fenn is active in the fur industry as of 2009.

Peoa

Fort Creek Mink Ranch
3078 W. State Road 32
Peoa, UT 84061
Phone: (435) 783-5266
Dale Williams
Status: Secretary of state records list farm as "active".
Species: Mink
Notes: The mink sheds likely to be associated with this address are above SR-32 on hill, east side, NW of this address. Single empty mink shed in front of house.

Fur Farm (possibly Fort Creek Mink Ranch)
5616 W. State Road 32
Peoa, UT 84061
Status: Inconclusive.
Notes: Address on the house closest to mink sheds which may be the Fort Creek Mink Ranch. Across the street from Marchant's Fur Farm.

Marchant's fur farm
5739 N. State Road 32
Peoa, UT 84061
Phone: (435) 783-5671
Norval S. Marchant
Status: Inconclusive. Presence of mink sheds confirmed.
Notes: West side of road.

D&B Fur Farm
5434 N. Woodenshoe Lane
Peoa, UT 84061
David Nielsen
Status: Confirmed open, 2009.
Species: Mink
Notes: 5 sheds. Small farm.



REES
MORGAN, UT



WARDELL FUR FARM
ENTERPRISE, UT



LARGENT FUR FARM
STODDARD, UT



1225 S. MORGAN VALLEY DR.
MORGAN, UT

G-W Fur Farm

4811 N. Woodenshoe Lane

Peoa, UT 84061

Phone: (435) 783-5295

Wendell J. Stenbridge

Status: Confirmed open, 2009.

Species: Mink

Notes: 23 sheds.

Providence

Fur Farm

592 N Main Street

Providence, UT 84332

Status: Confirmed open, 2009.

Species: Mink

Notes: Located east side of road, between E 550 N and E 650 N. Newly constructed residential neighborhood E of sheds. Barbed wire fence surrounding sheds/property. Neighborhood cul-de-sac points right at eastern-most shed @ 500 N and 140 E.

Richmond

North 40 Mink Ranch

11611 Highway 91

Richmond, UT 84333

(435) 258-2751

Howard J. Nivison

Status: Confirmed open, 2009.

Species: Mink.

Notes: Newly discovered farm. At corner of 11600 and Hwy 91.

Narrow, possibly half-row sheds. House SE of sheds. Train tracks run directly behind farm. Across from Pepperidge Farms factory. Small farm.

Sandy

Fur Breeders Agricultural Co-op (FBAC) - Sandy plant

8700 S 700 W

Sandy, UT 84070

Chris Falco: General Manager

Cody Mathews: President

Dale Christensen: Secretary

Susan: answers phones at main office.

Phone: (801) 255-4228 & (801) 289-4228

Status: Feed plant and mink farm confirmed open, 2009.

Species: Mink.

Notes: Mink farm and major feed production plant. One of two locations (other is in Logan).

Mink sheds at SW of property. Houses and trailers in front/E of sheds. Experimental feed research

farm also on the property. Large feed production building. Delivers to all member farms as far north as Morgan. On Jordan River. Second phone number is new.

Smithfield

Corey D. McMullin

1350 W 5000 N

Smithfield, UT 84335

Phone: (435) 563-9336

Status: Confirmed open, 2009.

Species: Mink.

Notes: Horses share lot with M. Narrow stretch of trees and thick brush line property to the N. House is at a great distance from the sheds.

South Jordan

Lyle Allen Groves

11454 S 1300 W

South Jordan, Utah 84095

Phone: (801) 254-3444

(801) 254 2181

(801) 794 1538

Lyle & Debra M Groves

Status: Confirmed open, 2009.

Species: Mink

Notes: Newly discovered farm. At intersection of 11400 S & 1300 W, West side of road.

McMullin & Sons Fur Farm

10471 S 1540 W

South Jordan, UT 84095

Phone: (801) 254-2817

Lindsey McMullin and son Brett

Status: Confirmed open, 2009.

Species: Mink.

Notes: Small farm with 4,000 mink. 8 sheds.

Dense residential neighborhood. Close to strip malls & a busy road. Address previously published as 10495 S 1540 W.

Holt Mink Ranch

10291 S 1230 W

South Jordan, UT 84095

Phone: (801) 254-4819

Ryan Holt

Status: Confirmed open, 2009.

Species: Mink.

Notes: 9 sheds. Located east of S 1300 W, off of Mabey Lane. Undeveloped residential neighborhood under construction along south of farm, 2009. Brick wall along south of property. Ryan Holt is a Board Member, Fur Commission USA (as of 2006).



MARCHANT'S

PEOA, UT



MARGETT'S MINK RANCH

WEST JORDAN, UT



SIGN POSTED @ UTAH COUNTY

MINK FARMS



D & B FUR FARM

PEOA, UT

Spanish Fork

Westwood Mink

8137 S 1800 W

Spanish Fork, UT 84660

Phone: (801) 798-1786

Fax: (801) 798-1482

Paul Westwood

Status: Confirmed open, 2009.

Species: Mink.

Notes: "Mink Operation" sign posted. Sheds close to house. Paul Westwood is Vice President, Fur Commission USA (as of 2006). Located south of W 8000 S/Highway 164.

Springville

Van Dyke Mink Farm

2700 Canyon Road

Springville, UT 84663

Robert Van Dyke

Status: Confirmed open, 2009.

Species: Mink.

Notes: 5 sheds. Small farm. Located south side of road. Shallow stream behind sheds. Large undeveloped residential neighborhood in rear of farm. Bike path runs along back, feet from sheds. Sheds at great distance from the house.

Toole

Lake Shore Mink Ranch (Russell Mink Ranch)

90 W Church Road

Toole, UT 84074

Phone: (435) 882-0687

Cloyd R. Russell

Status: Uninvestigated.

Species: Mink.

Notes: Located on south side of road, west of Liddell Lane.

West Jordan

Margetts Mink Ranch

1975 Canal Road

West Jordan, UT 84084

Phone: (801) 969-7555

Cory & Christy Margetts

Status: Confirmed open, 2009.

Species: Mink.

Notes: Located on south side of road. House in front/directly N of sheds. Chain link fence surrounding sheds. On dead end road.

Spotlight: Fur Breeder's Agricultural Co-op

Fur Breeders Agricultural Co-op (FBAC) - Sandy plant
8700 S 700 W

Sandy, UT 84070

Chris Falco: General Manager

Cody Mathews: President

Dale Christensen: Secretary

Susan: answers phones at main office.

Phone: (801) 255-4228 & (801) 289-4228

Status: Feed plant and mink farm confirmed open, 2009.

Species: Mink.

Notes: Mink farm and major feed production plant.

One of two locations (other is in Logan). Mink sheds at SW of property. Houses and trailers in front/E of sheds. Experimental feed research farm also on the property. Large feed production building. Delivers to all member farms as far north as Morgan. On Jordan River. Second phone number is new.

The co-op has several delivery routes. The following is the feed delivery route which leaves the co-op @ 2am (all times are approximate, and stops vary in order from night to night):

Departs the Sandy plant. (2:10am)

Wardell Fur Farm, Morgan.

Boyce Brothers, Morgan.

Seth Dawson, Morgan (4am).

(Visits one to three other farms in Morgan after the Seth Dawson farm, before Round Valley).

Round Valley Mink Ranch, Morgan (5am).

Black Willow Mink, Coalville (5:40am).

(May visit one or two farms after Black Willow, before BK Mink Ranch)

BK Mink Ranch, Coalville (6:20am)

(Driver often takes nap in truck outside Polar King restaurant on Main Street, then has breakfast inside @ 7am)

Leaves Polar King, Coalville (8am).

Rees' Fur Farm, Coalville (8:05am).

Ovards, Wanship (8:30am).

D&B Fur Farm, Peoa (9am).

G-W Fur Farm, Peoa (9:15am).

Return to Sandy plant.

Fur Breeder's Agricultural Co-op - Logan plant
1000 W 200 N

Logan, UT

Status: Confirmed open, 2009.

Notes: Major feed production plant. Delivers to all farms north of Morgan, as far north as Grace, ID. On SE corner of intersection, across from Texaco. One large (2 to 3 story) building at N end of property. One short and long (1 story) building S of property (garages). Second plant in Sandy.



Wanship

Ovard Mink Farm
1715 S. Hoytsville Road
Wanship, UT 84017
Phone: (435) 336-5820
Harold G. Ovard

Status: Confirmed open, 2009.

Species: Mink

Notes: Small farm. Approximately 1,200 mink. No fence. On dirt driveway E of Hoytsville Rd. Fields to N and S of property. At least one shed empty.

Woodruff

Kenneth Vernon Mink Ranch
285 E. Center Street
Woodruff, UT 84086
Phone: (435) 793-4246
Kenneth L. Vernon

Status: Inconclusive. Visually confirmed a single mink shed.

Species: Mink.

WASHINGTON

Total number of mink imprisoned: 115,200

Average farm size: 12,800

Mink farms in 2007: 9

Number confirmed as open, or appearing active:
6/7

Newly discovered mink farms uninvestigated: 2
Farms found closed or not at their published
address: 6

Farms yet to be discovered: 2/3+

Arlington

Erwin G. Joedicke
919 288th St NW
Arlington, WA 98223-9181
(360) 629-4895

Status: Uninvestigated.

Source: Old media report.

Notes: New, unpublished info. Satellite images show mink sheds.

Burlington

Northwest Farm Food Cooperative
1370 South Anacortes Street
Burlington, WA 98233
Phone: (360) 757-4225
Fax: (360) 757-8206

Contact: Vern Peterson, General Manager

Notes: Fur farm feed supplier. As of 2003, also operated a plant in Astoria, Oregon.

INSIDE THE OVARD MINK FARM

During the Fur Farm Intelligence Project, a driver for the Fur Breeder Agricultural Co-op (pictured below), Stan, invited one of our participants into the Ovard Mink Farm for a tour. Stan was unaware who he was inviting, or that all information he shared and photos of the farm he allowed would be made public.

We expect his 17-year employment with the F.B.A.C. will come to an abrupt end soon after this sees print.



Deming

Marr Mink Farm
9216 Cornell Creek Road
Deming, WA 98244
Phone: (360) 599-2881
Dale & Dawn Marr
Status: Reported open, 2008.
Species: Mink.
Notes: Second cluster of sheds just north, on Mt. Baker Hwy. Unknown if the USDA counts the two locations as one or two farms.

Marr Mink Farm
9471 Mt. Baker Highway
Deming, WA 98244
Phone: (360) 599-2881
Dale & Dawn Marr
Status: Reported open, 2008.
Species: Mink.
Notes: Mt. Baker Highway is also known as State Route 542. Second cluster of sheds just south, on Cornell Creek Rd. Unknown if the USDA counts the two locations as one or two farms.

Jerry Marr
4799 Mount Baker Highway
Deming, Washington 98244
(360) 592-5051
Status: Uninvestigated.
Source: Business directory.
Notes: New, previously unpublished address. 18 miles west of the Dale Marr Black Plush ranch. Mink sheds evident via satellite images. Between Scarlett Way & Mitchell Rd, south side of road.

Enumclaw

American Mink Council
21401 SE 396th Street
Enumclaw, WA 98022
Phone: (360) 825-1861
Fax: (360) 825-2442
Contact: Doug Kelly, Executive Director; Jeannie Carmel, President; Bryan Boyce, Vice President; Alex Ott, Secretary/Treasurer
Notes: "Collective representation for fur producers". Address is a residence.

Gifford

Miller's Mink Ranch
2823 Addy Gifford Road
Gifford, WA 99131
Phone: (509) 722-6334
Mike & Gina Miller
Status: Uninvestigated.
Species: Mink.

Graham

United Farms
23212 86th Avenue E
Graham, WA 98338
Phone: (253) 847-2345
Dale Pederson
Species: "Twelve species of fur bearing animals" (Fur Rancher Magazine).
Notes: Large farm. Not visible from road.
Located west of 86th Ave. Near very residential neighborhoods. Under-construction, uninhabited neighborhood along farm's south side (2009). Several fences around sheds. Sheds at a distance from the house.

Granite Falls

Jeff Craggs
7715 Robe Menzel Road
Granite Falls, WA 98252
Phone: (360) 691-5026
Harold B. & Mary Craggs
Status: Confirmed open, 2009.
Species: Mink.
Notes: Located on east side of road. House at a great distance from sheds.

Beck's Mink Farm
17903 Engebretsen Road
Granite Falls, WA 98252
Phone: (360) 691-6308
Harvey Allen Beck
Status: Confirmed open, 2009.
Species: Mink.
Notes: No house on site. Also address for Olympic Fur Breeders.

Pullman

John R. Gorham
Washington State University
3055 Antelope Trail
Pullman WA 99164
Phone: (509) 335-7321
Status: Evidence points to active, 2009.
Species: Mink.
Notes: Experimental fur farm. Reports place the likely location for the experimental fur farm at the above address, which is an unmarked dirt road extending east from Airport Rd, on the eastern edge of the WSU campus. Antelope Trail is reached via dirt road going east from intersection of Airport Road & Wilson Rd. The suspected site of the farm is on the south side of the narrow dirt road, not visible from Airport Rd. This facility also houses

deer "...and other wildlife species" (W.S.U literature). Received \$10,000 grants from Fur Commission USA in 2007 and in 2006. The research of David J. Prieur, also at WSU, was previously supported by Fur Commission USA.

Seattle-area

American Legend Cooperative / Seattle Fur Exchange
200 SW 34th Street
Renton, WA 98055
Phone: (425) 251-3200 or (866) 367-6465
Fax: (425) 251-3222
Contact: Joseph E. Morelli, President & CEO; Stan Rees, Chairman, Board of Directors
Notes: "An agricultural marketing cooperative, owned and governed by family fur farmers. American Legend has more than 200 member-owners, approximately one-third in Canada and the rest in the United States." Seattle Fur Exchange: "North America's largest fur auction house, selling over 70% of the North American mink crop annually." Acts as U.S. agent for Fur Harvesters Auction. Building is a large fenced-in warehouse located on train tracks in an industrial neighborhood south of Seattle.

Snohomish

Brainard Mink Ranch
19127 Welch Road
Snohomish, WA 98290
Raymond L. Brainard
Phone: (360) 668-2991
Status: Confirmed open, 2009.
Species: Mink.
Notes: Located south of State Route 522, west of the Snohomish River. Barely visible from road.

Sultan

Roesler Brothers Fur Farm
33425 138th Street SE
Sultan, WA 98294
Phone: (360) 793-0429
Brad & Kate Roesler
Status: Confirmed open, 2009.
Species: Mink.
Notes: Located at the end of a dirt road west of 339th Avenue SE, north of the McDonalds on US Hwy. 2. Sheds surrounded by dense forest. No house on site.

<p>USDA Fur Bearer Research Facility Pullman, WA</p> <p><i>Submitted anonymously.</i></p> <p>“When the call went out soliciting the location of the USDA Fur Bearer Research Facility in Pullman, WA; we made the drive to locate the research farm ourselves.</p> <p>It’s been speculated the better part of the fur farm addresses we have today were confiscated from fur industry research labs raided during Operation Bite Back. One address that never surfaced was for one of the facilities raided, the USDA Fur Bearer Research Facility at Washington State University. To this day, John Gorham remains the second largest recipient of research grants from the Fur Commission USA, and holds the title of one of the world’s foremost mink researchers. Gorham is still very much in business, and still a key figure in keeping the U.S. fur industry alive.</p> <p>The A.L.F.-authored publication <i>Memories of Freedom</i> – an anonymous account of every (claimed) action in Operation Bite Back - offers the only published information giving clues on the research farm’s whereabouts. Extracted from Chapter Four, we had only these crumbs of info to aid in our search:</p> <ul style="list-style-type: none"> *The farm was surrounded by barbed wire *On the “outskirts” of campus *Surrounded by grassland *“...on a road to the local airport”. <p>With little information to work with, we made the long drive to Pullman, WA to find the farm.</p> <p>We quickly narrowed the area that</p>	<p>could potentially house the research farm to the various ag-research animal pens along Airport Road, on WSU’s eastern edge. As described in M.O.F., along Airport Road we found pens of grizzly bears, sheep, goats, cows, and numerous other exotic and non-exotic species confined to small pens by WSU’s expansive animal research machine.</p> <p>At night, we explored the small labyrinth of dirt roads and paths along Airport Road on foot. In four hours, after inspecting numerous sheds, pens, and barns, we had narrowed potential sites for the farm to two locations:</p> <ul style="list-style-type: none"> *Two sheds of empty cages behind 1040 NE Airport Road. *A fenced outdoor facility off a dirt road adjacent to Wilson Rd, housing various sheds and pens. <p>Evidence pointing to the former was its location close to the only known address associated with WSU mink research: “1040 NE Airport Rd”. The sheds approximated the design of mink sheds, if bisected lengthwise. However the feeding devices on the cages appeared to more closely resemble those for birds than mink. And there was no grassy hill above the sheds, as described in M.O.F. Nothing else found near this address was likely to house mink. We took numerous photos of the two sheds for future review.</p> <p>Our strongest suspicions fell on a heavily secured facility tucked a quarter mile from Airport Road. Binoculars failed to reveal what was inside, but certain large animal pens were visible, along with a large shed and barn. We left to do more research and return the following</p>	<p>night for a closer look – and final answer.</p> <p>The next morning we reviewed old campus maps in the library, and older archived satellite images. One thing stood out: images from the early-1990s show two long sheds in an area inspected the night before, where there was now a vacant field. Their long and narrow form would make it unlikely they housed anything other than mink. Comparing new and old images revealed something further: While the sheds had been demolished, the fenced area under suspicion from the night before had been greatly expanded. Had the WSU consolidated its wildlife research into one secured facility after the 1992 A.L.F. raid?</p> <p>The next night we made the hike back to this location. The site is hidden off a dark, unmarked dirt road (later learned to be called “Antelope Trail”) branching east off Airport Road. Unlike every other animal facility off Airport Rd, this one was heavily secure, with a high barbed-wire fence, motion-sensor spotlights, several video cameras, and heavy lighting. At the rear of the facility, we found numerous animal pens. When our eyes adjusted to the darkness, we found ourselves face to face with numerous deer, confined to small pens. We spent many minutes sharing the silence of the night with these animals, staring at us from behind two layers of fencing.</p> <p>Beyond the deer pens, a large shed in the center had it’s contents mostly obscured, and any animals that may be inside were not visible. On the north, elevated just above the compound and outside its fence,</p>
--	--	--

WASHINGTON STATE UNIVERSITY
3055 ANTELOPE TRAIL
PULLMAN, WA

were three outdoor animal pens that were found empty. Inside the pens were red lights indicating alarms (or merely the appearance of them to serve as a deterrent). We moved towards the most suspicious portion of the site: the low-lying sheds in the NE corner, where we suspected the mink were housed. The obscured siding told us whatever was inside was not domesticated enough to live in a totally enclosed structure, but was something the animals' captors wanted shielded from public view. We were within 20 feet of the pens when, from inside, a red flashlight began moving towards us. We vanished into the grasslands, just short of an answer as to what lay inside the sheds at 3055 Antelope Trail.

The following day we returned in daylight for photos, which are being submitted with this report.

Although inconclusive, evidence indicates that 3055 Antelope Trail is the most likely location for the mink imprisoned at W.S.U. A review of the evidence:

*Its level of security is commensurate with a facility fearing a(nother) break-in, and inconsistent with security at all other animal pens at WSU (where security is absent).

*A WSU building list puts the address as a "Wildlife Bio Animal Holding Facility"

*Allowing for the possibility this facility housed mink at the time of the A.L.F. raid; there are several animal pens (large enough for coyotes) on a hill just above this facility, consistent with the M.O.F. description (coyotes were released during the A.L.F. action from a "hill above the fur farm").

*WSU describes this address as housing deer "...and other wildlife species".

*The low-lying sheds in back are consistent with the general height of mink sheds, a height unique to structures housing mink (among commonly raised livestock).

*Barring the possibility the research farm has been moved to an entirely different part of campus since the A.L.F. raid, our extensive survey of the "road to the local airport" found these to be the only pens whose captives we could not confirm, and the only location found with the potential to house mink.

The combined evidence and photos make a strong but inconclusive case for 3055 Antelope Trail as being the location of the experimental fur farm.

Anonymous"



Sumas

Olsen Mink Ranch
4695 Reese Hill Road
Sumas, WA 98295
Status: Uninvestigated.
Species: Mink.

Yelm

Schader Mink Ranch
19726 SE 128th Avenue
Yelm, WA 98597
Robert M. & Marjorie C. Schader
Status: Inconclusive.
Species: Mink.
Notes: Business records list business as "active", 2009.

Siggelow Mink Ranch
Vail Loop Road
Yelm, WA
Status: Unconfirmed.
Notes: Street address not known. Unconfirmed.
From The Final Nail #3.

WISCONSIN

Total number of mink imprisoned: 1,127,900
Average farm size: 15,886

Number of farms (2007 USDA statistics): 71
Number confirmed or appearing to be open: 53
Newly discovered farms uninvestigated: 8
Farms found closed or not at their published address: 56
Mink farms yet to be discovered: 10+

"Wisconsin tops the list for having the greatest number of unregulated fur farms in the country, with 71 mink fur farms counted by the USDA and possibly as many as 106 total fur farms when fox and alternative sources of information are included."

Abbotsford

Wisco Feeds
114 S. First Street
Abbotsford, WI 54405
Phone: (715) 223-4211
Contact: Alwyn K. Pedersen
Status: Open. Unknown if company still manufactures feed for fur farms.
Notes: Fur farm feed supplier. Building reads "Wisco Feeds". Office sign reads "Wayne Feeds";

Wayne Animal Health Aids 223-4596" on front of office building. Two buildings & two trucks on property. Within 15 minute drive of two other feed suppliers.

Athens

Donald Ewan Fur Farm
1846 County Road A
Athens, WI 54411
Phone: (715) 257-7333
Status: Uninvestigated.
Notes: No such address located on CR-A. Location needs further investigation.

Bristol

Krieger Fur Farm
17320 - 93rd Street
Bristol, WI 53104
Gerald R. Krieger
Status: Confirmed open, 2009.
Species: Mink.
Notes: 10+ foot wall of cages constructed around portions of farm.

Bruce

Northwest Mink Ranch
N4533 Zebro Road
Bruce, WI 54819
Phone: (715) 868-3581
Hans Haugen
Status: Confirmed open, 2009.
Species: Mink.
Notes: Large farm. "Northwest Mink Ranches Inc" sign on Hwy 8 and Zebro Rd. Thick forest N of sheds. Dirt road on N that runs directly to rear of sheds. Sheds on W side of Zebro Rd. Sheds visible from Zebro Rd and Hwy 8. House/office on property, SE of sheds. Several trailer homes E and NE of sheds. Processing / misc. buildings on opposite side of sheds, E side of Zebro Rd.

Campbellsport

Pagel Mink Ranch
W1095 County Road B
Campbellsport, WI 53010
Phone: (920) 477-4794
John & Carole Pagel, Joe Pagel
Status: Confirmed open, 2009.
Species: Mink.
Notes: On north side of road. "Pagel's Mink Ranch - Established 1955 by Victor and Elaine Pagel" sign on house. Possibly abandoned farm across the street, not visible from the road.

Kettle Moraine Mink Breeder's Association
W 1019 County Rd B
Campbellsport, WI 53010
Source: Internal fur industry documents.
Notes: Fur farm organization. New address. Address is for house just east of the Pagel Mink Ranch.

Caroline

Wiesman Mink Ranch
W13311 Buss Road
Caroline, WI 54928
Emil (Bud) & Karen Wiesman
Status: Confirmed open, 2009.
Notes: Large fur farm. South side of road. Buss Road dead-ends at the farm. Sheds behind tall fence, directly on the road. Dogs present, but fenced off from sheds. Also a hunting preserve which houses deer (Southbranch Preserve). Numerous signs posted reading "Deer Farm".

Catawba

Kornuth Mink Ranch
W9401 Hobbles Creek Road
Catawba, WI 54515
Contact: Ray Kornuth
Status: Unconfirmed.
Species: Mink.
Notes: Four sheds. Very small farm. Hobbles Creek Road dead-ends at the farm. Well-concealed, behind line of trees and behind house.

Chippewa Falls

Den-Patt Fur Farms
Rural Route 3
Chippewa Falls, WI
Status: Uninvestigated.
Notes: Address unknown.

Dorchester

Brecke Farms
5986 Reynolds Avenue
Dorchester, WI 54425
Gerald Brecke
Status: Confirmed open, 2009.
Species: Mink.
Notes: Located at end of Reynolds Ave., just south of County Line Road. Sheds best visible from County Line Rd (Reynolds Ave is a dead end/driveway to farm). House N of sheds, in close proximity.

Elkhart Lake

American Fur Farmers Association

W8209 County Road H

Elkhart Lake, WI

Status: Unconfirmed.

Notes: Fur farming organization ("second largest private treaty fur brokerage house in the world").

Current status unknown. Address is a house at the end of a long driveway. Delivery truck on property.

Fur Farm (possibly Winkel's Fur Farm)

Across the street from 1194 Sheboygan Rd.

Elkhart Lake, WI 53020

Possible contact: Thomas Winkel

Status: Confirmed open, 2009.

Species: Mink.

Notes: Possible site of T&T Mink or Winkel's

Fur Farm. Directly east of Dean Foods Dairy.

Dilapidated barn on site. Barn may be a house, but it is likely there is no house on site.

Eau Claire

A&M Dittrich Mink Farm Inc.

3624 Oakwood Hills Parkway

P.O. BOX 1030

Eau Claire, WI 54701-7754

Status: Uninvestigated.

Source: Wisconsin Secretary of State's Office

Notes: New info. Registered as a business in 2008. Address may be office of registered agent and not the farm.

Fond Du Lac

Gilgenbach Mink Farm

W7891 County Road T

Fond Du Lac, WI 54937

James E. Gilgenbach

Status: Uninvestigated.

Source: Wisconsin Secretary of State's Office

Notes: New info. Business listed as "active".

Second Gilgenbach Mink Farm address found to be closed.

Franksville

Fur Farm

9600 3 Mile Road

Franksville, WI 53126

Status: Inconclusive.

Notes: Farm not visible from street, set far back from road. Entrance just west of 96th Street. Two houses along driveway.

Green Bay

Cirde R Mink Ranch

3650 Shady Lane

Green Bay, WI 54313

Phone: (920) 434-0218

Randall J. Roberts

Status: No mink found at this address.

Notes: Operates as a deer farm. Pen holding deer found in the front yard.

Independence

Gamroth Fur Farm

W22577 State Road 121

Independence, WI 54747

Phone: (715) 985-3530

George Gamroth

Status: Confirmed open, 2009.

Species: Mink.

Notes: On busy road. House at a distance from many of the sheds.

Smieja Fur Farm

W22875 State Road 121

Independence, WI 54747

Phone: (715) 985-3020

Tom & Jan Olson

Status: Confirmed open, 2009.

Species: Mink.

Notes: On busy road.

Irma

Chelf's Mink Ranch

N7498 County Road H

Irma, WI 54442

Phone: (715) 453-8847

Michael J. Chelf

Status: Confirmed open, 2009.

Species: Mink.

Notes: House at distance from sheds. Located just south of Leach Road. County Road H is also known as County Road V.

Kenosha

Sally Costabile

8941 Cooper Rd.

Kenosha, WI 53142

Status: New info. Uninvestigated.

Source: Residence directory.

Notes: New info. Name previously published without address. Appearance of a small farm on satellite images, just south of this address, south of corner @ 91st Place.



WEISMAN MINK RANCH
CAROLINE, WI



FUR FARM
ELKHART LAKE, WI



NORTHWEST MINK RANCH
BRUCE, WI



SMIEJA FUR FARM
INDEPENDENCE, WI

Kewaunee

Langer Farms
E3285 Fur Ln (or 981 Norman Rd)
Kewaunee, WI 54216
Phone: (414) 776-1120
(920) 776-1207
Contact: James W. Langer, Kenneth J. Langer
Status: Confirmed open, 2009.
Species: Mink.
Notes: "Fur Lane" is the name given to the farm's driveway. Houses 20,000 mink as of 1997. Second phone number is new.

Kiel

Fuhrmann Fur Dressing
1101 4th St
Kiel, WI
Status: Evidence points to active.
Notes: Fur processor. Located in downtown Kiel. "Fuhrmann Furs Est. 1886" painted on side of building. Business likely to be located on second floor.

Lake Mills

Kurt Siegel
PO Box 204
Lake Mills, WI
920-648-5742
Status: Uninvestigated.
Notes: Address from Final Nail #3. No street address known. Uninvestigated.

Land O Lakes

Thang Mink Farm
CR-210
Land O Lakes, WI
Status: Uninvestigated.
Notes: No such road found.

Medford

Kalmon's Fur Farm
N3647 County Road E
Medford, WI 54451
George Kalmon
Status: Confirmed open, 2009.
Species: Mink.
Notes: Located north of Center Avenue; next to Romie Deml Mink Ranch. Visible from Center Ave and CR-E. Long sheds W of house, in close proximity to farmer and neighbor's houses. "Kalmon" on mailbox.

Romie Deml Mink Ranch
N3641 County Road E
Medford, WI 54451
Romie Deml
Status: Confirmed open, 2009.
Species: Mink.
Notes: Located south of Center Avenue; next to Kalmon's Fur Farm. No farm behind 3641 address. Farm is on the SE corner of the CR-E and Center Ave intersection, across the street from this address. 3641 mailbox reads "Deml".

Medford Fur Food
N3528 State Highway 13
Medford, WI 54451
Phone: (715) 748-2255
Fax: (715) 748-4548
Contact: Tony Kleifgen, Manager
Status: Confirmed open, 2009.
Notes: Fur farm feed supplier. Five semi trucks and other vehicles on the property. On east side of Hwy 13.

Hugh Haldebrandt, DVM
Medford Veterinary Clinic
Across the street from 898 S. Gibson Street
Medford, WI 54451
Phone: (715) 748-2341
Fax: (715) 748-6674
Web: <http://medfordvet.com>
Notes: Received \$7,000 research grant from Fur Commission USA in 2006. Published address is incorrect - Medford Veterinary Clinic is across the street. No sheds or evidence of mink research on site.

Central Mink Foods
651 S. Whelan Avenue
Medford, WI 54451
Phone: (715) 748-3188
Bruce Jentzsch
Status: Confirmed open, 2009.
Notes: Fur farm feed supplier. On west side of road. Single building. One small delivery truck in rear with "Central Mink Foods" logo.

David Dittrich Mink Ranch
N3472 Grahl Drive
Medford, WI 54451
Contact: David V. Dittrich
Phone: (715) 748-3247
Status: Inconclusive.
Notes: Very large fur farm. Located just south of Center Avenue. Visible from Grahl Dr. and Center Ave. Watchtower NE of sheds. Four large blue sheds found empty. No waste collections visible under other sheds.

Ed Dittrich Mink Ranch
879 E Perkins Street
Medford, WI 54451
Phone: (715) 748-4359
Ed Dittrich
Status: Confirmed open, 2009.
Species: Mink.
Notes: Located near downtown Medford. One of the oldest farms in the country, founded 1928.

Mildbrand Mink Ranch
W5339 Whittlesey Avenue
Medford, WI 54451
Phone: (877) 519-8933 or (715) 748-3988
Fax: (715) 748-9007
Scott & Gail Mildbrand
Status: Confirmed open, 2009.
Species: Mink.
Notes: Located just west of Highway 13. S side of road. House is barely visible from, but close to, road. Two dirt driveways on property. Sheds are S of house and barn, not visible from road.

Albers Mink Ranch
5299 Pleasant Avenue
Medford, WI 54451
Phone: (715) 748-5783
Mike & Lynn Albers
Status: Confirmed open, 2009.
Species: Mink.
Notes: Located between Highway 13 and Crane Drive. Sheds are very close to street on dirt road. Apparently vacant lot with access road E of property and across street. Black and white mink. House set SE from sheds, down long driveway.

Henry & Patricia Deml, Inc.
N2375 Hemlock Drive
Medford, WI 54451
Phone: (715) 748-2151
Henry G. Deml
Status: Confirmed open, 2009.
Species: Mink.
Notes: Located west of Hemlock Drive, off of County Road O. Sheds set back far from road, visible from County Road O. Mailbox reads "Bigley-Deml" off CR-O. Thick treeline between CR-O and sheds. Cornfield service road, S on Hemlock, runs along S side of sheds.

Blasel Fur Farm
W3923 Apple Avenue
Medford, WI 54451
Dennis Blasel
Status: Confirmed open, 2009.
Species: Mink.



ROMIE DEML MINK RANCH
MEDFORD, WI



JENTZSCH MINK RANCH
MEDFORD, WI



ED DITTRICH MINK RANCH
MEDFORD, WI



LANGER FARMS
KEWAUNEE, WI

Jentzsch Mink Ranch
1195 S. 8th Street / Highway 13
Medford, WI 54451
Phone: (715) 748-4587
Bruce Albert Jentzsch
Status: Confirmed open, 2009.
Species: Mink.
Notes: Large farm. Located just south of downtown Medford. Located just east of Central Mink Foods and south of Ed Dittrich Mink Ranch.

Menasha

Waschack Blue Haven Mink Ranch
W7015 Manitowoc Rd
Menasha, WI 54952
(920) 734-5201
Status: Uninvestigated.
Source: Business directory.
Notes: New, unconfirmed into.

Mishicot

Sandy Bay Mink Ranch (possibly the Bagniet mink ranch)
2228 Cherney Road
Mishicot, WI 54228
Phone: (920) 755-2834
1-800-999-2834
Brad L. Wiebensohn, Kurt Wiebensohn
Status: Confirmed open, 2009.
Species: Mink and other unknown species.
Notes: Large farm, with 30,000 animals as of 1997. Animals valued at 2.5 to 3 million dollars (1997). Farmer reports he raises mink "among other things" (1997). Located at corner of Cherney Road and W. Samz Road. Brad Wiebensohn is a Board Member, Fur Commission USA (as of 2006).

Mosinee

Geiger Mink Farm
1000 Gardner Park Road
Mosinee, WI 54455
Phone: (715) 359-7839
Thomas Geiger
Status: Confirmed open, 2009.
Species: Mink.
Notes: Located at corner of Gardner Park Road and River Forest Lane; just east of the Wisconsin River. Open - M. Gardner Park Rd is unmarked road just south of Weston Power Plant. Best view of farm is from footpath at end of Blueberry Lane (dead end road off Russell St), which leads directly to farm's rear. In a dense residential neighborhood.

Mount Calvary

Fur Farm (possibly Oak Grove Fur Farm)
2359 CR-149 / WH.
Mount Calvary, WI 53057
Status: Confirmed open, 2009.
Species: Mink.
Notes: Located at junction of SR 149 and County Road W, north side of road.

New Holstein

D&N Mink / Halbach Mink Ranch
W1314 Foundry Road
New Holstein, WI 53061
Donald Halbach
Status: Confirmed open, 2009.
Species: Mink.
Notes: Located at corner of Foundry Rd. & Plymouth Trail. "D&N Mink" is the legal name of this farm.

Fur Farm
W 1597 Foundry Rd.
New Holstein, WI
Status: Confirmed open, 2009.
Species: Mink.
Notes: Newly discovered farm.

Associated Fur Farms
N1326 County Road J (alternate address at same location: W846 Fur Farm Road)
New Holstein, WI 53061
R. Todd Langenfeld, Shaw C. Langenfeld, Maxwell T. Langenfeld
Status: Confirmed open, 2009.
Species: Mink.
Notes: Large farm. Located at corner of County Road J and Fur Farm Road.

National Pet Products (National Fur Foods)
1310 Milwaukee Drive
New Holstein, WI 53061
Phone: (800) 558-5803
Fax: (920) 898-5424
Dré Sanders, Director, National Fur Foods
Status: Confirmed open, 2009.
Notes: The single largest fur farm feed supplier. Produces fox and mink feed. Owned by Milk Specialties Company (Dundee, IL). Large complex with feed mill building and separate building housing offices. On a very busy street. Dead-end residential road runs along the rear.

Preissner Fur Farm
 New Holstein, WI
 Owner: Dennis Preissner, "Third generation fur farmer"
 Status: Uninvestigated.
 Source: Legal documents.
 Notes: New, uninvestigated info. Information points to this farm being open as of 2005. Address unknown. "Having to constantly watch my property making sure someone is not breaking in really takes its toll". (farmer quote, 2005)

Port Washington

Gary H. Anzia
 960 Lake Dr.
 Port Washington, WI 53704
 Status: Uninvestigated.
 Species: Mink.
 Source: Internal fur industry documents, media report.
 Notes: New info. Opened 1996.

Ogema

Magnuson Fur Farm
 W2166 Forest Drive
 Ogema, WI 54459
 Status: Confirmed open, 2009.
 Species: Mink.
 Notes: First two clusters of sheds (from the south on Forest Dr) are empty. Third cluster (across dirt road from the house) holds mink. House is on the opposite side of the street.

Onalaska

Schuppel Mink Farm
 436 S Court St
 Onalaska, WI
 Erwin Schuppel
 Status: No farm at this address. Investigation needed.

Oostburg

Smies Fur Farm
 W1618 Smies Road
 Oostburg, WI 53070
 Abram Smies
 Status: Confirmed open, 2009.
 Species: Mink.
 Notes: Located on the west shore of Lake Michigan. Sign posted announcing a \$500 reward from the Farm Bureau for information leading to the conviction of animal liberators. House close to sheds.

Zimbal Minkery
 6020 Wilson Lima Road
 Oostburg, WI 53070
 Robert & Linda Zimbal
 (920) 452 7380
 Robert Zimbal's personal email address: rjz@execpc.com
 Status: Confirmed open, 2009.
 Species: Mink.
 Notes: The two Zimbal farms are said to form the largest mink farm in North America. 40,000 breeding females producing up to 5 kits a year (up to 240,000 mink imprisoned). Farm is located at the end of Abraham Court, off of County Trunk A. Railroad tracks and convenient railroad service road run along east side of farm. Robert Zimbal is Treasurer, Fur Commission USA (as of 2008).

Fur Farm
 9632 Sauk Trail Rd.
 Oostburg, WI
 Status: Confirmed open, 2009.
 Species: Mink.
 Notes: Newly discovered farm. Expansion in progress, 2009. Many more sheds than what is reflected on most recent satellite images (2009). Unusually large buildings in front of sheds. W side of Sauk Trail Rd.

Polar

Polar formed the largest cluster of newly discovered farms of the Fur Farm Intelligence Project.

Fur Farm
 3424 5th Ave
 Polar, WI
 Status: Confirmed open, 2009.
 Species: Mink.
 Notes: Undergoing expansion, 2009. Sheds at great distance from house. W side of road, before Hattes St.

Fur Farm
 3222 5th Ave
 Polar, WI
 Status: Inconclusive.
 Notes: Two sheds set back from road. W side of road, after Hattes St. No house nearby.

Deerbrook Mink Ranch / Pavek Mink and Fox Farm
 6081 Hwy 64
 Polar, WI 54418
 Robert T. Pavek
 Status: Evidence points to active, 2009.
 Source: Internal fur industry documents, on-site investigation.
 Species: Mink. One or more of the Pavek farms also house fox.
 Notes: Row of sheds S of house, slightly



MAGNUSON FUR FARM
 OGEMA, WI



D & N MINK
 NEW HOLSTEIN, WI

downhill. Visible from the beginning of 5th Ave, E side. Paperwork obtained lists this address as open, and as housing mink and fox. First name is from Secretary of State records, second from fur industry documents.

Fur Farm
 6210 Hwy 64
 Polar, WI
 Status: Inconclusive.
 Notes: N side of road.

Fur Farm
 3510 5th Ave
 Polar, WI
 Guy and Mary Pavek
 Status: Inconclusive.
 Notes: House and sheds up private road, from W side of 5th. Shares private road with one other home.

Plymouth

Blanke's Hilltop Fur Farm
 W6343 State Road 67
 Plymouth, WI 53073
 Melvin O. Blanke
 Status: Confirmed open, 2009.
 Notes: Located east of Oak Road, southwest of the town of Plymouth. Mel Blanke is president of United Feeds, up the road.

United Feeds, Inc.

W8414 State Road 67

Plymouth, WI 53073

Phone: (920) 526-3211

Melvin O. Blanke, President

Status: Confirmed open, 2009.

Notes: Fur farm feed supplier. Located west of the town of Plymouth. Large complex. Three buildings. Several semi trucks with "United Feeds" logo. Collectively owned among approx. 26 fur farmers.

Rhineland

Zwicky Fur Farm

6775 Ole Lake Rd

Rhineland, WI 54501-9751

Status: Uninvestigated.

Source: Business directory

Notes: New, unpublished info. Farm visible via satellite images.

Sheboygan

Zimbal Mink Ranch

2111 Washington Avenue

Sheboygan, WI 53081

Phone: (920) 452-7380

Robert H. Zimbal

Robert Zimbal's email address: rjz@execpc.com

(920) 452 7380

Status: Confirmed open, 2009.

Notes: Located south of Washington Avenue at a distance, across railroad tracks. Very close to busy road and shopping centers. Second location of the Zimbal Minkery. As many as 240,000 mink imprisoned between the two locations.

Sheboygan Falls

Fur Farm (possibly Trimberger Mink Ranch)

N3481 County Road A

Sheboygan Falls, WI 53085

Phone: (920) 564-3115

Gerald Trimberger

Status: Confirmed open, 2009.

Notes: Located up the road from Zimbal mink farm, on corner of County Trunk A and Kurscheid Court. Alternate address for GERALD Trimberger (2522 N 15th St) investigated and found to be a storage business. Second alternate address found to be a residence only.

Stetsonville

Brecke Mink Ranch

N246 Oriole Drive

Stetsonville, WI 54480

Phone: (715) 678-2282

Edward O. Brecke, Jr.

Status: Confirmed open, 2009.

Species: Mink.

Notes: Very large fur farm. E side of road. A few sheds directly on Oriole Drive. Rest set farm back from road. Sheds on Oriole are S of mailbox number 206. Many sheds set at quite a distance from the house.

Stoughton

North American Fur Auctions

205 Industrial Park Drive

Stoughton, WI 53589

Phone: (608) 205-9200

Fax: (608) 205-9210

Greg Schroeder: US Trapper Relations Manager

(608) 207 3884 (cell)

(608) 205 9210 (fax)

Denis Schmitt: VP Ranch (fur farm) Relations

Michael Mengar: President and CEO

Status: Confirmed open, 2009.

Notes: U.S. head office and fur grading facility.

"NAFA is the largest seller of ranch raised mink and fox in North America." This location expanded its office and fur service processing facility in 2002.

Stratford

Walsh Mink Ranch

PO Box 101

Stratford, WI

Michael Walsh

Status: Uninvestigated.

Notes: Address unknown.

Superior

Arthur E. Modeen

4163 Hammond Ave.

Superior, WI 54880

(715) 394-3283

Status: Uninvestigated.

Source: Final Nail #3, residence directory.

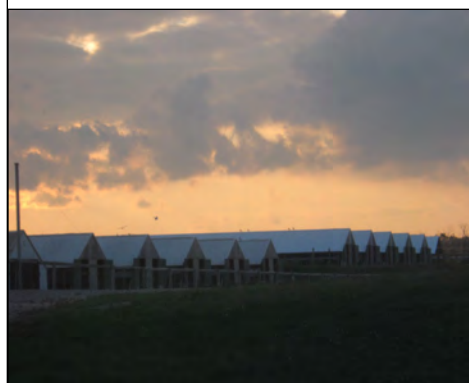
Notes: New address. Name of farmer previously published in Final Nail #3. Satellite images show the appearance of a fur farm.



ZIMBAL MINKERY
OOSTBURG, WI



SMIES FUR FARM
OOSTBURG, WI



NEWLY DISCOVERED FUR FARM
OOSTBURG, WI



BRECKE MINK RANCH
STETSONVILLE, WI

Tomahawk

Ames Mink Farm
9879 Siemering Drive
Tomahawk, WI 54487

Arvid Ames

Status: Confirmed open, 2009.

Species: Mink.

Notes: Large fur farm. Siemering Drive is off/west of US Business Highway 51.

House N of sheds. Large field to E of sheds. Most sheds are at a great distance from the house. Deer farm found just N of Ames property, located at 9948 Siemering Drive.

Ott's Mink Ranch

N10685 Red Pine Road
Tomahawk, WI 54487

Alexander & Jennifer Ott

Phone: (715) 453-8845

Status: Confirmed open, 2009.

Species: Mink.

Notes: Located off/east of Tannery Road. Farm is close to train tracks. Alex Ott is Secretary/Treasurer of the American Mink Council (as of May 2007).

Gessler's Pine Ridge Mink Ranch

N11856 Heafford Road

Tomahawk, WI 54487

David Gessler

Status: Confirmed open, 2009.

Species: Mink.

Notes: Located north of Beach Road. House on Heafford, sheds directly on Beach Rd (road for public beach access). Half block from a public park on one side, beachfront park on the other.

Verona

Fur Farm

Grandview Road

Verona, WI 53593

Status: Uninvestigated.

Notes: Located west of Fitchburg Road, north side of road.

Waupun

Lyle Bronkhorst

6779 Milligan Road

Waupun, WI 53963

Status: Confirmed open, 2009.

Species: Mink.

Notes: Located at corner of Milligan Road and Business Highway 151/County Road M.

Pens set back from road, barely visible. Very close to railroad tracks, which run along the E.

Wabeno

Fur Farm

6376 Wisconsin 52

Wabeno, WI 54566

Status: Inconclusive.

Notes: Several mink sheds visible from road. Very small farm. Status unknown.

West Bend

Stan Jagler's Farm

West Bend, WI

Status: Uninvestigated.

Source: Internal fur industry document.

Notes: Address unknown. Reported that three young males "triggered alarm" in a shed, 1998.

Westboro

Patrick Fur Farm

W3746 W Rib Road

Rib Lake / Westboro, WI 54490

Phone: (715) 427-5260

Michael Patrick

Status: Confirmed open, 2009.

Species: Mink.

Notes: Large farm. Located off of State Hwy. 102, south of the town center. N side of road.

Sheds directly on road. Large property with several buildings and trucks. "Patrick Fur Farm Inc" on semi truck door. One or two sheds at far SE of property are under possible construction for expansion (saw small tractors with stacked cages and planks of wood for building, 2009) Breeding records visible from road. Sign on building reads "Patrick Fur Farm, Fine Darks".

Wild Rose

Golden Sands Ranch

N5183 17th Drive

Wild Rose, WI 54984

Phone: (920) 622-3338

Harry Erickson

Status: Inconclusive. Possibly recently closed.

Species: Mink.

Notes: Large farm. Located between County Road A and County Road O. No scent of mink despite the size of the farm. Thousands of nesting boxes stacked between sheds (evidencing a possible dismantling process). Crane in rear of property adds to evidence farm is either being broken down or renovated. Inconclusive.

Woodruff

Kohl's Mink Ranch

Richard and Irene Kohl

Woodruff, WI

Notes: Address and status unknown. Two possible alternate addresses investigated; one was a storage unit, the other a lumber mill.



RENOVATION OR DECONSTRUCTION.
GOLDEN SANDS RANCH
WILD ROSE, WI



AMES MINK FARM
TOMAHAWK, WI



MILDBRAND MINK RANCH
MEDFORD, WI



PAGEL MINK RANCH
CAMBELLSPORT, WI



WIESMAN MINK RANCH
CAROLINE, WI



GEIGER MINK FARM
MOSINEE, WI



GESSLER'S PINE RIDGE MINK RANCH
TOMAHAWK, WI



UNITED FEEDS
PLYMOUTH, WI



NATIONAL FUR FOODS
NEW HOLSTEIN, WI



MEDFORD MINK FOOD
MEDFORD, WI



MEDFORD FUR FOOD
MEDFORD, WI



PATRICK FUR FARM
WESTBORO, WI



ALBERS MINK RANCH
MEDFORD, WI

CLOSED FARM DATABASE



FARMS FOUND CLOSED, OR NOT AT THEIR PUBLISHED ADDRESSES.

WHAT FOLLOWS IS A LIST OF MINK & FOX FARMS WHOSE ADDRESSES HAVE BEEN PREVIOUSLY PUBLISHED IN EITHER THE FINAL NAIL #S 1 - 3, OR WWW.FINALNAIL.COM, AND FALL INTO TWO CATEGORIES:

***FARMS INVESTIGATED AND BELIEVED TO BE CLOSED.**

***FARMS INVESTIGATED AND FOUND TO NOT BE AT THEIR PUBLISHED ADDRESSES.**

THOSE IN THE LATTER CATEGORY MAY STILL BE OPEN, AND LOCATED AT ANOTHER ADDRESS. SUCH FARMS SHOULD REMAIN SUBJECT TO FUTHER INVESTIGATION. WHEN CLOSURE HAS BEEN CONFIRMED THROUGH AN ON-SITE INVESTIGATION, IT HAS BEEN NOTED.

THESE SHOULD NOT BE TAKEN AS THE FINAL WORD ON THE FATE OF THESE FARMS. FARMS WHICH CLOSE CAN RE-OPEN, FARMS FOUND TO BE VACANT CAN RELOCATE, AND ANY NUMBER OF POSSIBILITIES AND UNKNOWN VARIABLES CAN MAKE DEFINITELY DECLARING ANY FARM "CLOSED" UNWISE. I HAVE LISTED EVERY DETAIL KNOWN TO ME THAT LENDS TO THE PROBABILITY A FARM IS CLOSED.

WHILE EVIDENCE SUCH AS BUSINESS RECORDS AND MEDIA REPORTS CAN BUILD A CASE FOR A FARM'S CLOSURE, ANY FARM THAT HAS NOT BEEN CONFIRMED CLOSED VIA AN ON-SITE INVESTIGATION TO BE COMPLETELY DISMANTLED SHOULD REMAIN SUBJECT TO FURTHER INVESTIGATION.

Colorado

Gibson Fur Farm
2363 Pioneer Road.
Delta, CO
Status: Closed.
Evidence: Listed as "dissolved" February 1, 2004.
Source: Secretary of State records.

Georgia

Crider Furs
Douglas, GA
Status: Closed.
Evidence: "Dissolved", 1986
Source: Georgia Secretary of State's Office
Notes: One-time largest mink farm in the country.

Idaho

Moyle 157 Ranch
9594 West Beacon Light Road
Star, ID 83669
Marjorie J. Moyle
Status: No farm at this address.
Source: On-site investigation.

Moyle Mink Ranch
280 North Plummer Road
Star, ID 83669
Phone: (208) 286-7373
Status: Closed.
Evidence: Sheds found empty.
Source: On-site investigation.
Notes: Address is residence. Abandoned single shed at Plummer and Pembridge. Abandoned cluster of sheds east on W State St, set back from road - now inhabited by peacocks.

Indiana

Hunter's Run Fox
5427 Greenwall Rd
Huntertown, IN
Status: Evidence points to closure.
Evidence: Business records show the business "dissolved", 1993.
Source: Indiana Secretary of State's office.

Hossier Hills Fox Farm
Status: Evidence points to closure.
Evidence: Business records show the business "dissolved", 1991.
Source: Indiana Secretary of State's office.

K & K Fur Producers
Status: Evidence points to closure.
Evidence: Business records show the business "dissolved", 2008.
Source: Indiana Secretary of State's office.

Iowa

Gothier Mink
501 W. Bridge Street
Anthon, IA 51004
Phone: (712) 373-5159
Status: Closed.
Evidence: All sheds gone. FBI interview with Iowa fur farmers show the farm closed in the 1990s.
Notes: At time of closure, was one of the oldest fur farms in the country.

Uckelman Mink Ranch
227 S. US Highway 71
Carroll, IA 51401
Phone: (712) 792-9727
Bernard Uckelman
Status: Closed.
Evidence: Old satellite images show sheds. New photos show no sheds.
Source: Satellite images.

Lloyd Drury
1884 Obrien Avenue
Clarion, IA 50525
Phone: (515) 532-3657
Status: No farm found at this address.
Species: Fox.
Source: On-site investigation.
Notes: This address is a residence on a lake.

Scott Nelson
Tollman Rd / 312th Street.
Ellsworth, IA
Status: Closed.
Evidence: Farm has been dismantled, sheds gone.
Source: On-site investigation.

Hidden Valley Fur Farms
32744 Kestrel Avenue
Guttenberg, IA 52052
Phone: (563) 252-2811
Steve Hansel
Status: Closed.
Evidence: Shed found gutted. Empty fox cages stacked at rear of property.
Source: On-site investigation.

Kevin Horstman
2882 317th Ave
Hopkinton, IA 52237
Status: No animals found at this address.

Sunset Fur Farm
201 W Railroad
Lincoln, IA
Status: Very unlikely there is a farm at this address.
Source: On-site investigation.
Notes: Dense residential neighborhood. Residence has very small fenced in portion of yard with tall wood siding. Unlikely to be a farm. No space to host anything but the smallest of farms.

Don Woodlund
2268 Rose Rd
Madrid, IA
Status: No farm at this address.
Source: On-site investigation.
Notes: Above address is a residence. Two possible alternate locations visited and found to be storage sheds and an abandoned egg farm.

Briar Hill Fur Farm
17509 130th Avenue
Monticello, IA 52310
Status: Closed.
Evidence: Old satellite images show sheds. New images show no sheds.
Source: Satellite images.

Vernon Guthridge
5005 Yew Avenue
Peterson, IA 51047
Status: Closed.
Evidence: All sheds found dilapidated and empty.
Source: On-site investigation.

Carl Greiner
2583 Sockum Ridge Road
Washington, IA 52353
Phone: (319) 653-3843
Status: No animals found at this address.
Source: On-site investigation.
Notes: Whole backyard surveyed. No sheds or animals seen. Farm may be at another address.

Hillpipe Mink Farm
136 Parkview Drive
Webster City, IA 50595
Status: Closed.
Evidence: No farm at this address. Reported closed by Iowa farmers in FBI interviews.
Source: Court documents, on-site investigation.

Twilight Mink Farm
1395 240th Street
Webster City, IA 50595
Phone: (515) 832-1086
Neil Bromm
Status: Closed.
Evidence: Farm at this address has been dismantled. Reported closed by Iowa farmers in FBI interviews.
Source: Court documents, on-site investigation.

Al Hindman
221 E Washington
Winterset, IA
Status: No animals found at this address. Farm may be at another address.
Source: On-site investigation.
Notes: Listed address is a residence.

Oakleaf Fur Farm
Woolstock, IA
Robert Kastler
Status: Closed.
Source: On-site investigation.

Minnesota

Canon River Fur Farm
"Co Rd 24 .4 mi W of TH 5"
Cannon Falls, MN, 55009
Status: Closed.
Evidence: A.L.F. communiqué in 1999 reported the farm has "been found abandoned". Business records state the farm had a "date to expire" of March 10th, 1998.
Source: A.L.F. communiqué archive, Minnesota Secretary of State records.

Castle Lehmann, Inc.
Detroit Lakes, MN
Status: Closed.
Evidence: Business records place status as "inactive".
Source: Minnesota Secretary of State records.

Goetsch Bros. Fur Farm, Inc.
750 Lakeside Drv
Gaylord, MN, 55334
Status: Closed.
Evidence: Business records place status as "inactive".
Source: Minnesota Secretary of State records.

Minnesota Fur Foods Cooperative
Status: Closed.
Evidence: Business records place status as "inactive".
Source: Minnesota Secretary of State records.

Montana

Leppink Mink Ranch
ABOX 132
Two Dot, MT
Status: Closed.
Evidence: Business records show farm "involuntarily dissolved", 2003.

Northwest Farm Food
(formerly Northwest Fur Breeder's Co-op)
Status: Montana plant, closed.
Evidence: Business records show this previously unknown feed plant is on "inactive" status as of November 3rd, 2008.
Source: Montana Sec. Of State records
Notes: Northwest Farm Food operates additional plants in Burlington, WA; and Astoria, OR; and may operate an additional plant in Idaho.

Crowell Mink Farm
1109 South Church
Bozeman, MT
Status: Closed.
Evidence: Records show the business "involuntarily dissolved", 1985.
Source: Montana Secretary of State records

Nebraska

Heartland Blends
James A. Gallant
500 Pearl St
Scribner, NE
Status: Closed.
Evidence: Filed "article of dissolution", 2003.
Source: Business records.
Notes: Above address is address listed in a business entity filing. Believed to operate from the Scribner address of John Smeal. Company describes its purpose as "to engage in the manufacture and sale of both wholesale and retail of mink and fox food".

Schank's Fur Farm
2465 11th Rd
Central City, NE
Status: Closed.
Evidence: Two sheds standing (of a onetime 30+ sheds), one shed completely gutted.
Source: On-site investigation.

Tate Hide & Fur
4607 23rd St
Columbus, NE
Status: Nothing found at this address.
Source: On-site investigation.
Notes: Fur processor / wholesaler.

Rancher's Choice Fur Foods
Plainview, NE
Status: Closed.
Evidence: Business records show the company "merged out", 1996
Source: Nebraska Secretary Of State's office

New York

L. W. Bennett & Sons
Bennett & Strong Rd.
Victor, NY
Status: Closed.
Evidence: Records show business underwent "dissolution", 2005.
Source: New York Secretary of State records.

Oregon

Trail's End Fur Farm
Astoria, OR
Status: Closed.
Evidence: Filed "article of dissolution", 2005.
Source: Oregon Secretary of State's Office.

Tynkila Mink
40107 Brook Lane
Astoria, OR 97103
Status: Closed.
Evidence: Every shed found empty.
Source: On-site investigation.

Glen Kellow
38655 Highway 22
Hebo, OR 97122
Margaret Kellow
Status: Evidence points to closure.
Evidence: Several sheds visibly overgrown. Reported as closed by the A.L.F. in 1999.
Source: On-site investigation, media reports.

Mark & Judy Wustenberg
9725 9th St
Bay City, OR
Status: Evidence points to closure.
Evidence: Single mink shed found in backyard. Nothing heard or smelled.
Source: On-site investigation.

Whelan Fur Farm
10241 Leverman Road SE.
Aumsville, OR 97325
Phone: (503) 749-1021
Michael S. Whelan
Status: Closed.
Evidence: Sheds found empty and decayed.
Source: On-site investigation.

Saramink
9822 Saratoga Dr NE
Silverton, OR
Status: Evidence points to closure.
Evidence: Business records show "Involuntary Dissolution" in 1999. Only one possible mink shed found at this address.

Montano, Inc
3324 Forest Gale Dr
Forest Grove, OR
Ernest & Sandra Montano
Status: No farm found at this address.
Notes: Address is residence. From Final Nail #3.

S&N Fur Farms
40499 Oupor Drive
Scio, OR 97374
Ed Sandberg
Notes: Mink, fox farm. Located east side of road.
Status: Closed.
Evidence: Every shed partially inspected, found empty. Additional info submitted stated the sheds appear to be dismantled as of Oct. 2009, with construction equipment on the property.
Source: On-site investigation.

Hoyt Fur Farm
4500 Alderbrook Road
Tillamook, OR 97141
Howard K. Hoyt
Status: Closed.
Evidence: Sheds decayed and empty. No evidence of animals. Business records show "administrative dissolution", 2004.
Source: On-site investigation, business records.

Jim Ruef Mink Farm
20489 Hazelnut Ridge Road
Scotts Mills, OR 97375
James C. & Regina Ruef
Status: Closed.
Evidence: Sheds found empty and grown over.
Source: On-site investigation.

Jacob Fur Farm
9300 Sollie Smith Road N.
Tillamook, OR 97141
Status: Closed.
Evidence: Only shed found housed horses. Business records show "involuntary dissolution", 1998.
Source: On-site investigation.

Sugarload Acres (previously known as Hillside Fur Farm)
9010 Sollie Smith Road N.
Tillamook, OR 97141
Contact: Brad L. & Gretchen D. Jacob
Status: Closed.
Evidence: No longer sheds at this location. Records show "Administrative Dissolution", 2004.
Source: On-site investigation, Oregon Secretary of State's office.

South Dakota

Turbak Mink Ranch
46285 US Highway 212
Watertown, SD 57201
Larry N. Turbak, Eric & Kathy Turbak
Status: Closed.
Evidence: Sheds have been dismantled.

Hausman Mink Ranch
Yankton, SD
Status: Closed
Evidence: Business records show farm underwent "dissolution", 2001.

Utah

Fenn Mink Ranch
6975 W 7300 N
American Fork, UT
Notes: Nothing seen at this address.

Fur Farm
1155 SW Hoytsville Rd
Coalville, UT
Status: Closed.
Source: On-site investigation.

Fur Farm
Henefer, UT
One long mink shed visible from I-84, north side.
Status: Confirmed closed.
Evidence: Shed was found gutted.
Source: On-site investigation.
Notes: The name or address of this farm is unknown.

Covert Mink
79 W 200 S
Hyrum, UT
Notes: Residence. No farm.

Larson Fur Farm
8622 N 9150 W
Lehi, UT 84043
Phone: (801) 768-3498
Rex N. Larson
Status: Closed.
Evidence: Satellite photos show sheds. On-site investigation found sheds are gone, with no evidence of farm.
Source: On-site investigation.

Beckstead Fur Farms
8745 N 9150 W
Lehi, UT 84043
Contact: Kent W. Beckstead
Status: No farm found at this address.
Evidence: Satellite photos show sheds. On-site investigation found sheds are gone, with no evidence of farm.
Source: On-site investigation.

Jex Mink Farm
11431 W 7600 N
Lehi, UT 84043
Keith W. Jex, Todd Jex
Status: Closed.
Evidence: Deconstructed mink sheds found.
Source: On-site investigation.

B & D Fur Farm
3252 North Morgan Valley Drive
Morgan, UT 84050
Status: Relocated to Malad, ID
Evidence: Farm no longer found at this address.
Source: News reports, on-site investigation.

Fur Farm
1160 N Main St
Lewiston, UT
Status: Evidence points to closure.
Evidence: Two sheds inspected (of dozens) and found overgrown and empty. No smell of mink, despite large size of farm. Not conclusive, but evidence points strongly to closure.
Source: On-site investigation.

Fur Farm
634 N Morgan Valley Dr
Morgan, UT
Status: Evidence points to closure. Inconclusive.
Evidence: Four sheds. Two gutted, rest decayed.
Source: On-site investigation. Address is very close to DJ Mink Inc. (645 N Morgan Valley Dr), which the Secretary of State's office records as "active".

Follett Fur Farm
898 N 700 E/Old Highway Rd
Morgan, UT
Status: Closed.
Evidence: All sheds gone. Brand new houses in backyard and all around property.
Source: On-site investigation.

Fur Farm
800 block N 700 E/Old Highway Rd (Approximate address)
Morgan, UT
Status: Closed
Evidence: Dismantled farm, numerous torn down sheds.
Source: On-site investigation.

John H. Thackery Farm and Mink Ranch
921 N 700 E
Morgan, UT
Status: Closed, or farm not at this address.
Evidence: No farm found at this address. Records show business "dissolved", 1999
Source: On-site investigation, Utah Secretary of State's office

Gale Vernon Mink
Sandy, UT
Status: Closed.
Evidence: Records show business "involuntarily dissolved", 1998
Source: Utah Secretary of State's Office

Mathews Fur Farm
624 N Main
Millville, UT
Status: Closed.
Evidence: Records show business "dissolved".
Source: Utah Secretary of State's Office
Notes: Listed in Final Nail #3

Spencer Fur Farm
25 S Morgan Valley Dr.
Morgan, UT 84050
Status: Address is a residence.
Source: On-site investigation.
Notes: Active in "activities related to real estate", according to Secretary of State's office. No farm found on site.

Blue Ridge Mink Ranch
4070 N. Woodenshoe Lane
Peoa, UT 84061
Status: No farm found at this address.
Source: On-site investigation.

Stembridge Fur Farm
4840 Wooden Shoe Ln.
or
4575 Wooden Shoe Ln.
Peoa, UT
Status: No farm found at either address.
Source: On-site investigation.

R. Dee Petersen
11660 s 1300 w,
Riverton, UT 84095
(801) 254 0489
Status: No farm found at this address.
Source: On-site investigation.

Beckstead Mink Ranch
11196 S 1700 W
South Jordan, UT
Status: Farm no longer at this address.
Source: On-site investigation.

D.O. Jex Mink Farm
10490 S 1000 W
South Jordan, UT
Status: No farm found at this address.
Source: On-site investigation.

Pitcher Mink Ranch
606 W 100 N
Smithfield, UT
Status: Closed.
Evidence: Single mink shed found empty.
Source: On-site investigation.

Fur Farm
572 E 100 S Street
Morgan, UT 84050
Status: Evidence points to closure.
Evidence: Most sheds dismantled.
Source: On-site investigation.
Notes: South side of street, at end of dirt road. Street address is approximate.

Tucker Fur Farm
272 N. State Street
Morgan, UT 84050
Status: Evidence points to closure.
Evidence: All but two sheds dismantled. Remaining sheds not inspected.
Source: On-site investigation.
Notes: Located just south of the Weber River. N. State Street is also known as Highway 66.

Washington

Clarence Jordan
6130 Mink Street NW
Olympia, WA 98502
Phone: (360) 866-2307
Status: Evidence points to closure.
Source: Sandy Parker Reports (January 2006).
Evidence: Clarence Jordan reported "retired." Unconfirmed.

Ed Peterson Mink Ranch
8619 Mero Road
Snohomish, WA 98290
Ed Peterson
Status: Closed.
Evidence: No animals found at this address. Sheds formerly present.
Source: On-site investigation.

Blacksmith Mink Ranch
3851 Hwy 970
Cle Elum, WA 98922
David W. Smith
Status: Closed.
Evidence: Sheds once located at this address, now gone.
Source: On-site investigation.

Burchak Mink Ranch
1941 Mohar Road
Cle Elum, WA 98922
George P. Burchak
Status: Closed.
Evidence: Two sheds found standing. Both empty. Business records state business underwent "dissolution", June 2009.
Source: On-site investigation, business records.

Waneczek Mink Ranch
11470 Hwy. 970
Cle Elum, WA 98922
Contact: Jan D. & Caryn L. Waneczek
Evidence: Old satellite image show sheds. On-site investigation showed sheds are now gone.

M&M Mink Ranch
7721 State Route 92
Lake Stevens, WA 98258
Marvin & Mary Bakko
Status: Closed.
Evidence: No animals found at this location. Sheds gone. One remaining shed found gutted.
Source: On-site investigation.

Eric Darvis
7714 S. Goose Gap Road
Benton City, WA 99320
Status: No farm found at this address.
Source: On-site investigation.
Notes: No farm found on the only property found between a 6800 & 7800 block address of S. Goose Gap Road. However Google places the above address at end of the block, one block north of the investigated address. This property was not investigated. Satellite images show what cannot be ruled out as a single wide animal shed. However, this property does not match with the listed address.

Powers Wildlife
22905 Keating Road E
Orting, WA 98360
Phone: (360) 897-6215
Status: No farm found at this address.
Notes: Small outdoor pen in backyard. Structure not similar to those known to house mink or fox. No cages seen in pen. More closely resembled an aviary. No other sheds or pens seen. Not believed to house mink or fox.

Wisconsin

Lea Brothers Mink Ranch
Highway 95
Alma Center, WI
Skip & Buster Lea
Status: Evidence point to closure.
Evidence: Sheds appear gone in satellite images.
Source: Satellite images.
Notes: Skip sentenced to 3 years in federal prison for poisoning a competitor's animal feed. Former chairperson of the Fur Commission USA. Old satellite photos show sheds. New photos show no sheds.

Buckley Mink
W 15906 County Rd C
Athelstane, WI
Status: No farm found at this location.
Source: On-site investigation.
Notes: This address is at least 30 miles west of Athelstane.

Roger Kubitz
1147 E County Road F
Athens, WI
Status: Closed.
Evidence: Sheds are dilapidated and collapsed.
Source: On-site investigation.
Notes: Address is in the Goodrich area, NE of Athens.

Fromm Bros.
436 E County Road F
Athens, WI
Status: Closed.
Evidence: "The Fox Tale" retreat now occupies this location.
Source: On-site investigation, media reports. One-time largest fox farm in the U.S.

Ral-Ett
10886 Shady Rd
Auburndale, WI
Ralph Bredl
Status: No farm seen at this address.
Source: Satellite images.

O.J. Krull & Sons Fur Farm
W 5188 Rock Road
Black Creek, WI 54106
(alternate address: 4140 N. Richmond Street, Appleton, WI 54913)
Status: Uninvestigated. No farm seen via satellite images.
Notes: Farm may be closed; may only operate as a rendering business.

Pagel's Mink Ranch (second address)
W 1095 County Highway B
Cambellsport, WI 53010
Status: Evidence points to closure.
Notes: Old satellite photos show 17 sheds at this address, across from the other Pagel Mink Ranch. Now reduced to two sheds. Not visible from road. Status unconfirmed.

Marvin L. Pivonka
226 N ST HWY 148
Cato, WI 54206
Status: Closed.
Evidence: Records show business "dissolved", 1990
Source: Wisconsin Secretary of State's Office
Notes: Address published in in Final Nail #3.

Valley Mink Ranch
N 4392 Weeks Rd
Chilton, WI
Status: Closed.
Evidence: Old satellite photos show 4 sheds. New photos show no sheds.
Source: Satellite images.

Klinger Farms (formerly Klinger Fur Farm)
12756 132nd Street
Chippewa Falls, WI 54729
Contact: Mary, Bob, Dave & Dennis Klinger
Status: Closed / no farm found at this address. Records show business "dissolved", 1987.
Source: On-site investigation. Wisconsin Secretary of State's office.
Notes: Now "Klinger Farm Market", a vegetarian organic farmer's market. Sheds visible on satellite images are greenhouses.

David Mink Ranch
W 4th Rd & S 27th Rd
Coleman, WI
Status: Evidence points to closure.
Evidence: One shed seen gutted, several others grown over. Not every shed inspected. Small farm.
Source: On-site investigation.
Notes: "David Mink Ranch" sign on front of house.

Twin Spruce Fur Farm
5209 Rosedale Rd
Deerbrook, WI 54424
Status: Closed.
Evidence: One shed dismantled. Farm gave no smell of mink. Business records list the farm as "dissolved".
Source: On-site investigation, Secretary of State records.
Notes: Mailbox read "Deerbrook Mink Ranch LLC" (name of a farm elsewhere in WI).

William Smith Mink Ranch
W 4272 Lima Rd
Or
4301 Lime Road
Eden, WI
Status: Closed / no farm at this address.
Source: On-site investigation.
Notes: No mink sheds found, only one barn with a tractor.

Graves Mink Ranch
19298 Hemlock Drive
Eland, WI 54427
Howard and Wendy Graves
Phone: (715) 253-6224
Status: Closed.
Evidence: Old satellite photos show sheds. New photos show no sheds.
Source: Satellite images.

T & T Mink
N9563 Sexton Rd
Elkhart Lake, WI
Status: Closed / no farm found.
Notes: No animals or sheds seen at this address.

Denny Patten & Sons Fur Farm
1676 CR-N or 1654 CR-N
Friendship, WI 53934
Dennis C. Patten
Status: Closed.
Evidence: Old satellite photos show sheds. New photos show no sheds.

Frank Kleinsek
W 5036 County Road A
Elkhart Lake, WI 53020
Status: Closed.
Evidence: One shed found with no cages.
Source: On-site investigation.
Notes: Previously published address of W 5036 County Road H.

Wenh Capitol Fur Farm
2976 County Road MM
Fitchburg, WI 53711
John A. Wenh
Status: Evidence points to closure.
Evidence: Old satellite photos show faint outline of old sheds. New photos show no sheds.
Source: Satellite images.

Shorts Fur Farm
W 3466 WI-10
Granton, WI
Notes: Closed.
Evidence: All sheds were found to be gone.
Source: On-site investigation.
Notes: This farm once had 100+ sheds.

Barr Minkery
W 7276 Chickadee Road
Greenwood, WI 54437
Status: No farm found at this location.
Source: On-site investigation.
Notes: "Barr's Shipping and Receiving" sign at Chickadee Rd. "Barr's Transport, Inc: Greenwood, WI" on semi truck door. Several buildings and trucks.

Gilgenbach Mink Farm
W 3695 Johnsbury Rd
Fon Du Lac, WI
Status: Closed.
Evidence: Only one shed found, completely gutted.
Source: On-site investigation.
Notes: Secretary of State's office has second address for Gilgenbach Mink Farm listed as "active": W 7891 County Road T, Fon Du Lac, WI. New address is uninvestigated.

Macarthur Mink Farm
6945 E US-14
Janesville, WI
Status: No farm found at this address.
Source: On-site investigation.
Notes: Several tool sheds and barns and two houses on property.

Leischow Fur Farm
8901 Cooper Rd
Kenosha, WI
Status: No farm found at this address.
Source: On-site investigation.
Notes: Residence. No sheds.

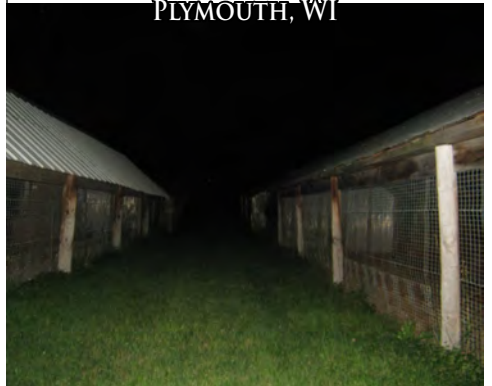
Gene Meyer Fur Farm
Plymouth, WI

Received anonymously.

"Our visit to the Meyer Fur Farm revealed that every shed on the property was empty. When Gene Meyer said the A.L.F. shut his farm down in 1999, he wasn't lying. This farm is closed.

Sadly, we found some of the sheds had replaced mink for pigeons. We hope that Mr. Meyer does not feel he can escape militant intervention by animal rights activists by swapping oppression of one species for another, and that one night soon someone cuts the lock off every shed and releases these birds to freedom."

GENE MEYER FUR FARM: SHUT DOWN PLYMOUTH, WI



Hidden Acres Fur Farm
17930 Church Road
Kiel, WI 53042
Paul L. Endries
Status: No farm found at this address.
Source: On-site investigation.
Notes: "Hidden Acres Fur Farm" sign on road. No other evidence of farm. Located in the village of St. Nazianz.

Shady Acres Mink Farm
10719 County Road A
Kiel, WI
Status: No animals / sheds found at this address.
Source: On-site investigation.

Cooper Mink Ranch
7112 N Cemetery Rd
Loretta, WI
Status: Closed.
Evidence: Old satellite photos show sheds. New photos show no sheds.
Source: Satellite images.

Bonderosa Ranch
13217 County Road F
Newton, WI
Status: Closed.
Source: On-site investigation.
Evidence: Old satellite images show mink sheds at this address. 2009 on-site investigation found no sheds / animals.

University of Wisconsin
Virus and Fur Research Building
2105 Herrick Drive
Madison, WI
Richard M. Shackelford
Status: Fur research farm & lab closed.
Notes: Former fur researcher operated a fur research farm. Shackelford's mink and fox research program did not survive his retirement in 1974. In 1985, The Virus and Fur Research Building became the home of the Physical Plant director.

Wenh Capitol Fur Farm
2976 County Road MM
Madison, WI
Status: No farm seen at this address.
Source: On-site investigation.
Notes: Nothing seen from CR-MM, just long drive-way. No sheds.

Arndt Mink Ranch
W7843 Center Ave
Medford, WI
Status: No farm found at this address.
Source: On-site investigation.
Notes: Only cornfields found at this address.

Jack Dittrich
5226 W Perkins St
Medford, WI
Status: Confirmed closed, 2009.
Evidence: Vacant field where farm once stood.
Source: On-site investigation.

Elmer Reimann
W7322 Apple Ave
Medford, WI
Status: No farm found at this address.
Source: On-site investigation.

Washack Mink Ranch
W 7015 Manitowoc Rd
Menasha, WI
Status: Closed.
Evidence: Old satellite photos show farm. New photos show no sheds.
Source: Satellite images.

United Vaccines
7819 Airport Rd
Middleton, WI
Status: Freeway has been built over this address.
Source: On-site investigation.
Notes: Former site of United Vaccines research farm. There is no longer anything at this address.

F Mink Ranch
720 E. Coates Avenue
Monticello, WI 53570
Phone: (608) 938-4475
Alfred & Mary Aeberhard
Status: Closed.
Evidence: Old satellite photos show sheds. New photos show no sheds.
Source: Satellite images.

Wittenberg Fur Farm
1773 County Road G
Nekoosa, WI
Status: Closed.
Evidence: Fenced in area appearing to once house sheds. No sheds found.
Source: On-site investigation.

Cherry Valley Mink Ranch
W703 Fur Farm Road
New Holstein, WI 53061
Charles W. Osborne
Status: Closed.
Evidence: No farm at this address. Numerous empty sheds next door.
Source: On-site investigation.
Notes: Nothing seen on at this address, however large empty cluster of sheds sits next door, across the street from the farm at 846 Fur Farm Road.

Fuhrmann Fur Farm
N267 County Road A
New Holstein, WI 53061
Kenneth & Marian Fuhrmann
Status: Closed.
Source: On-site investigation.
Notes: Fenced-in area with no sheds. Old satellite images show sheds were once present.

Voskull Mink Ranch
N2141 State Road 32
Oostburg, WI 53070
Martin Voskull
Status: Evidence points to closure.
Evidence: Two sheds found gutted. A third deemed very likely to be empty via partial view from the road. Fourth shed uninspected.
Source: On-site investigation.
Notes: Located just north of Demaster Road.

National Fur Foods Research Ranch
US-45 & W Ripple Ave
Oshkosh, WI
Status: No longer at this address.
Source: On-site investigation.
Notes: Quoted in the mid-90s as being the most important mink research farm. It is possible the farm has relocated.

H.M.B. Fur Farms
N8119 Mink Ranch Road
Phillips, WI 54555
John L. Baumgartner
Status: Closed / no farm found at this address. Records show business "dissolved", 2005.
Source: On-site investigation, Wisconsin Secretary of State's Office.

Fur Farm
3857 5th Ave
Polar, WI
Status: Evidence points to closure.
Evidence: Grown over and collapsing sheds.
Source: On-site investigation.
Notes: S of Hwy 64, E side of road.

Meyer Fur Farm
1014 Short Cut Road
Plymouth, WI 53073
Gene Meyer
Status: Closed.
Evidence: Every shed found empty of mink.
Source: Anonymous submission, 2009.
Notes: Some sheds now imprison pigeons.

Steinhardt Brothers Mink Farm
875 South Street
Plymouth, WI 53073
Phone: (414) 893-2762
Status: Closed.
Evidence: Every shed found dismantled of all but the framework.
Source: On-site investigation.
Notes: At one time a very large fur farm.

Redgranite Mink Ranch
W4391 Cumberland Road
(alternate address: 2031 Cumberland Road)
Red Granite, WI 54970
Roger Lee Merrick
Status: No farm found at these addresses.
Source: On-site investigation.
Notes: Second address is non-existent on Cumberland Rd.

Zwickey's Fur Farm

4003 US-47
Rhineland, WI

Status: Evidence points to closure.

Evidence: Aerial photos show no farm at this address.

Final Nail #3 reports "may be closed".

Source: Satellite images, Final Nail #3.

Vadnais Fur Farm

W 9966 Triple Kay Road
Rosendale, WI 54974

Phone: (920) 872-2926

Scott & Diane Vadnais

Status: Closed.

Evidence: Old satellite photos show sheds. New photos show no sheds.

Source: Satellite images.

Batt's Mink Farm

W 1090 Garton Rd
Sheboygan, WI

Status: Evidence points to closure.

Evidence: No farm evident via satellite images. Records show business "dissolved", 2008

Source: Satellite images, Wisconsin Secretary of State's office.

Zimmermann Mink Ranch

W 3397 WI-28
Sheboygan Falls, WI

Status: Closed / no farm at this address.

Source: On-site investigation.

Schultz Fur Farm

4409 South Sam Anderson Rd
South Range, WI

Gerald Schultz

Status: Closed.

Evidence: Old satellite images show sheds. No photos show no sheds.

Source: Satellite images.

Mook's Mink Ranch

S 12180 Neuheisel Rd
Spring Green, WI

Status: No farm found at this address.

Source: On-site investigation.

Harold DeHart

N 1486 CR-A
Tomahawk, WI 54487

Status: Closed.

Evidence: Records list farm as "dissolved, 2006. Satellite images show former mink sheds are now gone.

Source: Wisconsin Secretary of State's Office

Yauger Fur Farm

2902 WI-310
Two Rivers, WI

Status: Closed.

Evidence: Old satellite photos show sheds. New photos show no sheds.

JKJ Fur Farm

20705 & 21021 Durand Ave
Union Grove, WI

Kenneth Kury

Status: Closed / no farm found at this address. Records show business "dissolved", 1990

Source: On-site investigation.

Notes: Both addresses are residences with no farm.

Wisconsin Secretary of State's Office.

Kurt Mink Ranch

16615 Washington Ave
Union Grove, WI

Status: No farm found at this address.

Source: On-site investigation.

Notes: Address is a residence.

Kickapoo Fur Foods

Highway 14 S.

Viroqua, WI

(608) 637-3502

Status: Reported closed. Uninvestigated.

Notes: Fur farm feed supplier. Media reports plant closed in November, 1999.

Fur Farm

Grandview Rd (N of Fitchrona Rd, N side of rd)
Verona, WI

Status: Closed.

Evidence: Single mink shed found housing firewood.

Source: On-site investigation.

Wilderness Mink Ranch

3150 Highview Dr
West Bend, WI 53095

Status: Uninvestigated. Reported closed.

Source: Final Nail #3

Goodell

Box 166

Wheeler, WI 54772

Evidence: Records show business "dissolved", 1991

Source: Wisconsin Secretary of State's Office

Notes: Address published in in Final Nail #3.

Wyoming**WYO Furs**

138 Main Street
Eden, WY

Status: Closed.

Evidence: No pens found at this address.

Source: On-site investigation.

THE FOLLOWING IS A LIST OF 325 MINK FARMS OPEN IN 1981, WITH THE FARM NAME (STRIPPED OF THEIR "MINK FARM" / "FUR FARM" SUFFIXES), TOWN LOCATION, AND OWNER NAME (AS OF 1981). THIS LIST WAS COMPILED BY SOURCES INSIDE THE FUR INDUSTRY IN THE EARLY COURSE OF THIS

1981 FUR FARM LIST.

1980S AND WAS OBTAINED IN INVESTIGATION.

THERE WERE 1122 MINK FARMS IN 1980. TODAY THERE ARE 274. ACCOUNTING FOR FARMS WHICH HAVE OPENED SINCE 1980, IT CAN BE EXPECTED WELL OVER 80% OF THESE FARMS ARE CLOSED. IT IS MY HOPE THAT BURIED IN THIS LIST ARE A HANDFUL OF PREVIOUSLY UNKNOWN, ACTIVE FARMS.

THESE UNKNOWN FARMS ARE WAITING TO BE DISCOVERED. LOCAL RESEARCH BY ACTIVISTS ACROSS THE COUNTRY WILL BRING THEM TO LIGHT.

Pine Tree Corner John J Heaney Southbury, CT	Pine Grove R.J. Moede Reedsville, WI	Pinewood Tony Mauldin Harrisburg, NC	Oak Ridge Collin Wood Sandy, UT	Crow River Mohwinkel & Splett- stazer Lester Prairie, MN	Wading River Paul Gildersleeve Alfred, ME	Chateau de Mink Wesley Baker Tacoma, WA	Blue Star Orbra Geery Harvey, IA
Big Timber Beverly Baldwin LaCrosse, KS	White Pine Henry Meyer Medford, WI	Whispering Pines D.R. Ball Mechanicstown, OH	Cedargrove William Boughten Bothell, WA	Sunny Brooke Theodore Fairchild Canby, MN	Duck Creek George Anthony Whitehall, MI	Wyomink William Kostenbauer Buffalo, WY	Silver Star Everett Mueller Fredricksburg, IA
Pine Crest C.D. Edwards P.A. Woodland Wesport, MA	Orchard Al Berenze Chilton, WI	Pine Crest Dennis Bowman Tipp City, OH	Oak Ridge Jerry Haller Olympia, WA	Silver Creek Percival Johnson Fosston, MN	Skug River Reginald & Ralph Mortimer Andover, MA	Woodchuck Lane Carl Ahlberg Harwinton, CT	White Star Claire Zimmerman Staceyville, IA
Locust Milo Kincner Rutland, MA	Shady Oaks Wallace Shymanski Kenosha, WI	Hickory Grove Douglas McKay Jr. Marengo, OH	Edgewood Donald Schmit Puyallup, WA	Lost River Larson & Fournier Oklee, MN	Stony Brook William Beeckler Granton, WI	Moosehead Clifford Church Foxcroft, ME	North Star David Calhoun Cambridge, WI
Cedar Dell Manuel Soares North Dartmouth, MA	Streamwood Ceal Smith Wisconsin Rapids, WI	Evergreen T.M. Van Buskirk Kenton, OH	Forest Crest Nick Whalen Kent, WA	Stony Brook John Gunshaw Lowman, NY	Pine Creek Richard Bender Baraboo, WI	Stillwater Arthur Anderson Jamestown, NY	North Star Jule Wisner Two Rivers, WI
Evergreen Myron Bergstrom Cushing, WI	Pine Grove R.G. Stanek Yuba, WI	Big Timber Robert Taylor Marietta, OK	Grove Dale Hoffman Elm Grove, WV	Riverview Delbert Shisler Oakwood, OH	Rib River M.S. Bouche Marathon, WI	Trail's End Esther Pernu Astoria, OR	Sundance Acres Isabel Falone Moorestown, NJ
Hawthorn Harold Blanke Plymouth, WI	Three Cedar Frederic Warnke Pardeeville, WI	Oakview E. & J. Sandoz Newberg, OR	Blue Sky Thomas Newhalfen Henry, IL	Moon Brook Lawrence Love Sindairville, NY	Riverside I.E. DeLong Elmwood, WI	Peaceful Acres William Yocum Mount Union, PA	Acres Clinton Haroldson Renville, MN
Evergreen Harold Brenizer St. Croix Falls, WI	Cedar Grove Edward Boehlke Waverly, MN	Oak Grove Mathew Bertovic Industry, PA	Sunny Acres G.B. Roberts Kokomo, IN	Black River Walter Meyer Grafton, OH	Riverside Henry Dexheimer Elkhart Lake, WI	Serene Valley James Thomas Alderwood Manor, WA	Silver Island Austin Christiansen Peshigo, WI
Pinecrest Winard Eisenman Tomahawk, WI	Emerald Pine Cloquet, MN C.M. Johnson	Woodcrest Elwood Brunt Lansdale, PA	Rainbow Gilbert Holmes Lawton, IA	Turkey Creek L.O. Lantz Goltry, OK	Minks Creek Wallace Flunker Cascade, WI	Pleasant View Lloyd Kalkofen Casper, WY	Island View Manny Herzig International Falls, MN
Pine View Joseph Geiger Mosinee, WI	Wildwood Renay Thaler Mahtomedi, MN	Oakwood Albert DeMatteis Boyers, PA	Sun Rise Clayton Ballard Lake Park, MN	Columbia River Stanley Harny Astoria, OR	Riverside Orval Hollenbeck Soldiers Grove, WI	Paradise Elmer Lichty Mattoon, IL	Black Diamond Maynard Johnson Two Harbors, MN
Shady Knoll George Gunderson Park Falls, WI	Linden Tree G.J. Waschenbach Mexico, MO	White Pine R.L. Roht Huntington, PA	Rainbow Donald Schmidt Pequot Lakes, MN	Lost Creek Arnold Johnson Clatskanie, OR	Mink River Floyd Lettie Sister Bay, WI	Hidden Acres Isidore Endries Kiel, WI	Gem Gerald Melcher Walters, MN
Oak Grove Wilbert Halbach Mount Cavalry, WI	Timber Edge Darwin Peterson Stevensville, MT	Tall Pines George Holtzapple New Columbia, PA	Rainbow Frank Borzio Swedesboro, NJ	Sandy Creek John Thomas Franklin, PA	Springbrook Andrew Wilz Omro, WI	Blue Haven David Washack Salem, WI	TNT Frank Twardowski Jr. Lemont, IL
Shad-E-View F.S. Hartel Mishicot, WI	Lone Tree Kenneth Reyner Marquette, NE	Oak Lane Douglas Michael Turbotville, PA	Sunset Edwin Danielson Banks, OR	Huff Creek Merill Orgill Coalville, UT	Yellow River Gaylord Hartsough Pittsburgh, WI	North Star Charles & Donald Fromm Kasota, MN	XL Richard Varys Crystal Lake, IL
Ever Green James Heffernan Pittsville, WI	Pleasant Grove Joseph & Edward Nowacki Long Valley, NJ	Sylvania Victor Pernel Meadow Lands, PA	Growing Dawn Dean Burrell Dundee, OH	Fort Creek Dale Williams Peoa, UT	White Owl Ted Wyrwas Antigo, WI	Northern Lights Donald & George Kohler Bigfork, MN	Cirde Dot B & D Burg Chilton, WI
Timberline W.J. Huemmer Madison, WI	Pine Crest Isabelle Hanson Attica, NY	Willow Charles Roshon Douglassville, PA	Ebony Sheen Roland Stafford Harlowton, MT	Toppenish Creek James Clements Toppenish, WA	Red Bird Frank Seals Oregon, WI	Double H Arnold Hopp Franklin, MN	
Pine View Burton Kempf Siren, WI	Lone Pine John Shamanek Franklin, NY	Black Willow Coalville UT John Adkins	Blue & White Frank Cloutier Pinconning, MI	Riverview Nat Weaver Snohomish, WA	Gopher Town Henry Fairchild Canby, MN	North Star S.E. Kowaleski Laurel, NJ	Lazy G Godfrey Paone Carmel, NY
Oak Acres William Koenig Waukesha, WI	Maple Lane W.H. Tripp Unadilla, NY	Cottonwood C.C. Campbell Salt Lake City, UT	Crystal Blue Clements & Cowles Belding, MI	Fern Creek Robert Critchfield Cataldo, ID	Antlers Willis Russell Estacada, OR	Gold Star Carl Danmenberger Bridgeton, NJ	7BY Harvey Crouse Fort Plain, NY
Willow J.J. Marisch Minocqua, WI	Elm Leaf Mecham & Payne Midvale, UT	Royal Blue Fred Pupeter Oshkosh, WI	Royal Blue Fred Pupeter Oshkosh, WI	Quiet Brook Donald Snyder Freeport, IL	Mink Hollow Clarence Ziegler Mohnton, PA	Starlight C.L. Anderson Puyallup, WA	Cirde S James Stooksbury Greenville, SC
	Cedar Knoll Frank Zielinski Rome, NY					Royal Star Dee Gilmore Waukegan, IL	

7D7 James Boyum Renner, SD	Lakeview Eugene Lamer Tomahawk, WI	Belle Canyon F.E. Stephens Salt Lake City, UT	Silver Gates Ted Augur Kenton, OH	Mountain Man M.A. Guetzke Jr. Mequon, WI	Windy Hills E.H. McLaughlin Winterport, ME	Sugar Loaf Leonard Offutt Jr. Walkerville, MD	Sunnyhill Paula Joehnke IL
Double L Scott Linford Sandy, UT	Crystal Lake Lonn Lamer Heafford Junction, WI	Valley-Hi Burton Doane Monroe, WA	Silverclad Lowell Krohnberg Blooming Prairie, MN	Hilltop Frank Kurjacek Sturtevant, WI	Windy Heights E. & A. Anacki Moscow, PA	Shady Lane E. & A. Anacki Middleboro, MA	Al-Jo Glenroy Koeppen WI
Lazy W F.B. Weeks East Springfield, PA	Desiree Duane Ruberg Two Harbors, MN	Sky Valley Roger Akers Monroe, WA	Rocky Acres Vincent Wilthew Garrettsville, OH	Hillside Louis Lobermeier Fifield, WI	Windy Hill George Swan Sioux Falls, SD	Shawsheen Joseph Petraitis Tewksbury, MA	Timberwood Ted Nugent MI
Star X Louis Herrick Ellensburg, WA	Balkan V.M. Smolcich Chisholm, MN	Hidden Valley John Shull & Martha Perry Atwood, IN	Lime Stone Henry Westenkircher Genoa, OH	Hillside Fredric Melius Adell, WI	Windy Ridge S.C. McLachlan American Fork, UT	Skyline Lester Smith South Sudbury, MA	Good-Win Goodwin Sonstegard MN
Blue Mist Alvin Johnson Warroad, MN	Bon-Air Wesley Dierschow Smithville, MO	Valley Harold Braatz Eden, WI	Quarry Clifford Young Gouldsboro, PA	King Mountain Paul Chrisman Bellingham, WA	Windway Fred Dettmann Lake Mills, WI	Las Tri LaVon Kastel Ottawa Lake, MI	Patrician S.F. Hesse Rib Lake, WI
Silver Lake Ed Kaiser Henderson, MN	Wooden Shoe Wendell Stenbridge Peoa, UT	Dutch Valley LaVale, WI	Rocky Top Gregory White Peoa, UT	Mountain View Charles Guehl Cle Elum, WA	Windy Ridge Herman Sees Medina, OH	El Nod Donald Crist Crystal Falls, MI	Master Benson & Streu Glencoe, MN
Lakewood Leslie Kienholz Park Rapids, MN	Völperie Cecile Woods Cle Elum, WA	Nacanicum C.A. Smith Seaside, OR	Gem State Dennis Lowe Franklin, ID	Nob Hill Robert Kusek Tacoma, WA	Crystal Springs Simon Gorwitz Oshkosh, WI	Blood & Guts Thomas Kreger Petersburg, MI	Quality Vern Vine Vida, MT
Cross Lake Roger Larson Fosston, MN	Bellefontain Clarence Hamman Hamilton, IN	Pawnee Donald Welden North Platte, NE	Blue Orchid Russell Edge Silver Bay, MN	Belwett Pass Clarence Walgren Centralia, WA	Crystal Springs John Seider Menasha, WI	Ah-Kwer-Ah Wayne Buzzard Toole, UT	Crown F.C. Blakeman & Sons Norfolk, NE
Lake Sylvia Herbert Marhon South Haven, MN	Valley Elmer Miller Spring Valley, WI	Squalicum Beatrice Ederer Bellingham, WA	Green Apple Frank Hopes Jr. Hardin, MT	Blue Mountain John Bucha Danielsville, PA	Honeysuckle Springs M.H. Yancey Poughkeepsie, AR	Hercules Chester Chastek Spokane, WA	Foremost D.M. Bradburn Seaside, OR
Pine Lake C.E. Rogers Kenton, OH	Cherry Valley Charles Osborne Wisconsin Rapids, WI	Minneconjou J. Maytum & K. Mitchell Spirit Lake, IA	Whitemarsh Dudley Smith Duluth, MN	Springhill Steve Fedorko Portage, PA	Crystal Springs Donald Paulsen Kimballton, IA	Four Sisters May & Saunders Bellingham, WA	Imperial William Miller Seaside, OR
Lake View Royal Jensen Provo, UT	River Valley Jacob Van Der Meer Arkdale, WI	Ojibwa William Boecker Winter, WI	Sunny Slope Philip Menard Chester, NH	Rose Hill Rose Hammond Spangler, PA	Jordan Valley Marvin Jensen West Jordan, UT	Ranch Furs Estate Alva Fairley Chehalis, WA	Choice Wertz & Hillegas Mann's Choice, PA
Fishlake Roy Mallory Salt Lake City, UT	Valley Wilbur Westphalen Plymouth, WI	Nokomis Frank Jedlicka Tomahawk, WI	Mountain View John Schwarz Columbia, NJ	Scenery Hill James Rhodes Scenery Hill, PA	Bethlehem Arnold Polonsky Littleton, NH	Ranch Furs Estate L.A. Haller Puyallup, WA	Royal Michael Shandor Chestnut Ridge, PA
Lakeview Blair Maxwell Peoa, UT	Golden Valley Harry Van Der Voort Jr. Ryegate, MT	Warrior Run Franklin Bush Watsonstown, PA	Mount Nebo Rethamel & Drewelow Viola, WI	Black Hills Malcolm Nash Hill City, SD	Bethlehem Fischer & Werley Bethlehem, PA	Brick Road Blair Hudson Hudson, WA	Modern Paul Johnson Kent, WA
Lakeview Thomas Mower Brigham City, UT	Echo Valley Phyllis Byers Wellsville, OH	Frontier Herman Kakeley Everett, WA	Hillside Al Ruesch Medford, WI	Mountain Meadow Darrell Proctor American Fork, UT	Greenridge E.J. Phillips Eight-Four, PA	Crestline Meta Hansen Beaver Dam, WI	Shoe String Farrand Hall Wyoming, NY
Lake Shore Cloyd Russell Erda, UT	Valleywood Maurice Gladfelter Swanton, OH	Daniel Boone D.B. Dillon Norwood, CO	Hillview Joseph Pahl Attica, NY	Mountain View Lavon Ross Jr. Santaquin, UT	Skyline Gerald Mendenhall Salt Lake City, UT	Spur Warren Jarlsberg Cambridge, WI	Knot So Grande Kirk Grose Wellington, OH
Lake Stickney Erwin Joedicke Alderwood Manor, WA	Valley View Henry Gollon Tillamook, OR	Bay State Leonard Chisholm Wilmington, MA	Mountaineer Henry Zinner Broadalbin, NY	Mountain View Wayne Waite Hyde Park, UT	Oxboro Donald Pearson Newton, WI	Green Rock John Kurhajec Franksville, WI	Just-A-Mere Joseph Temple Chardon, OH
Swan Lake John Barth Pardeeville, WI	Sleepy Valley George Jorney Alliance, OH	Oxbow Joseph Altschwager Columbus, WI	Walnut Hill Jerry Komon Mantua, OH	Edge-Mount Paul Williams American Fork, UT	Thunderhead Bishop & Von Drake Mercer, WI	Crystal Louis Meszaros Glenfield, NY	Atlasta Edward Butcher Canby, OR
Fish Lake Elmer Ganser Lodi, WI	Cedar Canyon Leonard Paola Boring, OR	Old Hickory D.F. Doubrava Twinsburg, OH	Fern Hills Roy Anderson Hebo, OR	Beacon Hill Edward Gondola Beacon Falls, CT	Rancho Sorrento Arnold Lenschmidt Sacramento, CA	Fur Barn Raymond Butcher Bucyrus, OH	Little Black Howard Bobbe Medford, WI
Lake Ellen Elmer Grahl Cascade, WI	Cedar Canyon Mrs. Jack Paola Milwaukie, OR	Haven Cedric Abel Sheboygan, WI	Ivy Hill Gene Nadon Astoria, OR	High Meadows Wallace Pearson Byfield, MA	Consolidated W.J. Nieland Wauconda, IL	Mink Barn William Talidis Union, IL	Last Resort Edward Peasley Standwood, WA
Lakewood John Griesbach Manitowoc, WI	Cherry Valley J.V. Hammond Spangler, PA	Green Acres Fred Broge South Wayne, WI	Hood View David Craig Oregon City, OR	Sand Plains Gerald Ross Caseville, MI	Major Carl Piampiano Zion, IL	Ridgeview John Rachel Canal Fulton, OH	Just-A-Mere William Hart Adair, IL
Windy Lake Gunter Herrmann Algoma, WI	Green Valley Robert Guilani Drums, PA	Saint Rest Timothy Flanagan Albert Lea, MN	Snow Peak Gerald Graham Lebanon, OR	Sahara J.C. Merrihew Salt Lake City, UT	Royal Spartan Roy Pottschmidt Bargersville, IN	Veteran M.M. Minkoff Astoria, OR	
Lakeside R.E. Quinn Hillsboro, WI	Cool Valley Joseph Hordies Houston, PA	Nature's Charles Smith Natural Bridges, NY	Echo Hill Oscar Wickham Salem, OR	Silver Moon Ray Mullins Bucyrus, OH	Shady Ridge Myron Stucky Moundridge, KS	Royal Astor Gene Nadon Astoria, OR	
			Honeymoon Hills Gene Dempsey Helenville, WI	Windy Hill Hans Nickel Ottumwa, IA		Bellefontain Dale Hamman IN	



Thousands of us.

Less than 300 of them.